


Anti-BRAF antibody [CL4004] ab220032

5 图像

概述

产品名称	Anti-BRAF抗体[CL4004]
描述	小鼠单克隆抗体[CL4004] to BRAF
宿主	Mouse
经测试应用	适用于: IHC-P, WB
种属反应性	与反应: Human 预测可用于: Chicken, Quail 
免疫原	Recombinant fragment (proprietary-tag) corresponding to Human BRAF aa 250-450. Database link: P15056 Run BLAST with Run BLAST with
阳性对照	Human prostate cancer, Human fallopian tube, Human breast cancer and Human testis tissues; MOLT4 cell line lysate.
常规说明	<p>The Life Science industry has been in the grips of a reproducibility crisis for a number of years. Abcam is leading the way in addressing this with our range of recombinant monoclonal antibodies and knockout edited cell lines for gold-standard validation. Please check that this product meets your needs before purchasing.</p> <p>If you have any questions, special requirements or concerns, please send us an inquiry and/or contact our Support team ahead of purchase. Recommended alternatives for this product can be found below, along with publications, customer reviews and Q&As</p>

性能

形式	Liquid
存放说明	Shipped at 4°C. Store at +4°C short term (1-2 weeks). Upon delivery aliquot. Store at -20°C long term. Avoid freeze / thaw cycle.
存储溶液	pH: 7.20 Preservative: 0.02% Sodium azide Constituents: 40% Glycerol (glycerin, glycerine), 59% PBS
纯度	Protein A purified
克隆	单克隆
克隆编号	CL4004
同种型	IgG2b

应用

The Abpromise guarantee

Abpromise™承诺保证使用ab220032于以下的经测试应用

“应用说明”部分 下显示的仅为推荐的起始稀释度;实际最佳的稀释度/浓度应由使用者检定。

应用	Ab评论	说明
IHC-P		1/500 - 1/1000. Perform heat mediated antigen retrieval with citrate buffer pH 6 before commencing with IHC staining protocol.
WB		1/500 - 1/1000. Predicted molecular weight: 84 kDa.

靶标

功能

Involved in the transduction of mitogenic signals from the cell membrane to the nucleus. May play a role in the postsynaptic responses of hippocampal neuron.

组织特异性

Brain and testis.

疾病相关

Note=Defects in BRAF are found in a wide range of cancers.

Defects in BRAF may be a cause of colorectal cancer (CRC) [MIM:114500].

Defects in BRAF are involved in lung cancer (LNCR) [MIM:211980].

Defects in BRAF are involved in non-Hodgkin lymphoma (NHL) [MIM:605027]. NHL is a cancer that starts in cells of the lymph system, which is part of the body's immune system. NHLs can occur at any age and are often marked by enlarged lymph nodes, fever and weight loss.

Defects in BRAF are a cause of cardiofaciocutaneous syndrome (CFC syndrome) [MIM:115150]; also known as cardio-facio-cutaneous syndrome. CFC syndrome is characterized by a distinctive facial appearance, heart defects and mental retardation. Heart defects include pulmonic stenosis, atrial septal defects and hypertrophic cardiomyopathy. Some affected individuals present with ectodermal abnormalities such as sparse, friable hair, hyperkeratotic skin lesions and a generalized ichthyosis-like condition. Typical facial features are similar to Noonan syndrome. They include high forehead with bitemporal constriction, hypoplastic supraorbital ridges, downslanting palpebral fissures, a depressed nasal bridge, and posteriorly angulated ears with prominent helices. The inheritance of CFC syndrome is autosomal dominant.

Defects in BRAF are the cause of Noonan syndrome type 7 (NS7) [MIM:613706]. Noonan syndrome is a disorder characterized by facial dysmorphic features such as hypertelorism, a downward eyeslant and low-set posteriorly rotated ears. Other features can include short stature, a short neck with webbing or redundancy of skin, cardiac anomalies, deafness, motor delay and variable intellectual deficits.

Defects in BRAF are the cause of LEOPARD syndrome type 3 (LEOPARD3) [MIM:613707]. LEOPARD3 is a disorder characterized by lentiginos, electrocardiographic conduction abnormalities, ocular hypertelorism, pulmonic stenosis, abnormalities of genitalia, retardation of growth, and sensorineural deafness.

Note=A chromosomal aberration involving BRAF is found in pilocytic astrocytomas. A tandem duplication of 2 Mb at 7q34 leads to the expression of a KIAA1549-BRAF fusion protein with a constitutive kinase activity and inducing cell transformation.

序列相似性

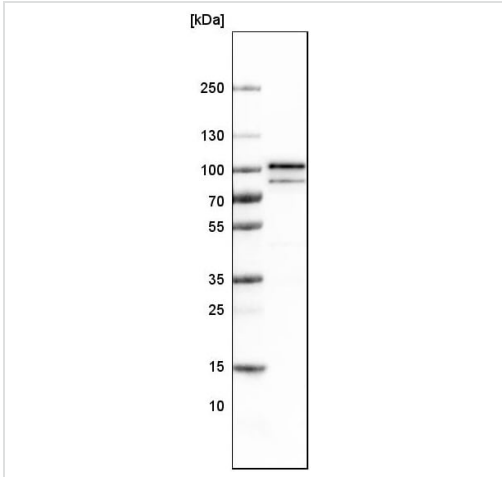
Belongs to the protein kinase superfamily. TKL Ser/Thr protein kinase family. RAF subfamily. Contains 1 phorbol-ester/DAG-type zinc finger. Contains 1 protein kinase domain.

Contains 1 RBD (Ras-binding) domain.

细胞定位

Nucleus. Cytoplasm. Cell membrane. Colocalizes with RGS14 and RAF1 in both the cytoplasm and membranes.

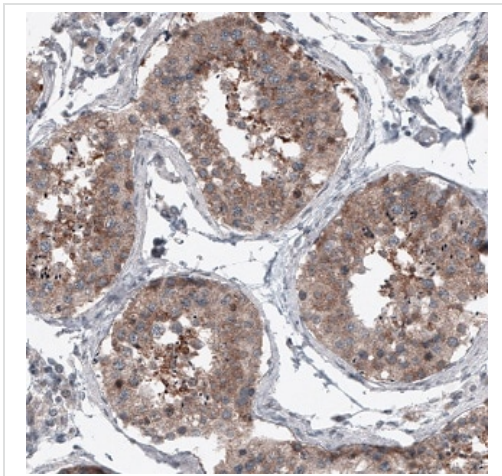
图片



Anti-BRAF antibody [CL4004] (ab220032) at 1/500 dilution + MOLT4 cell line lysate

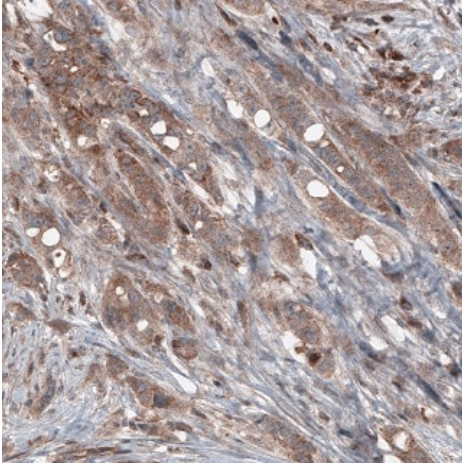
Predicted band size: 84 kDa

Western blot - Anti-BRAF antibody [CL4004] (ab220032)



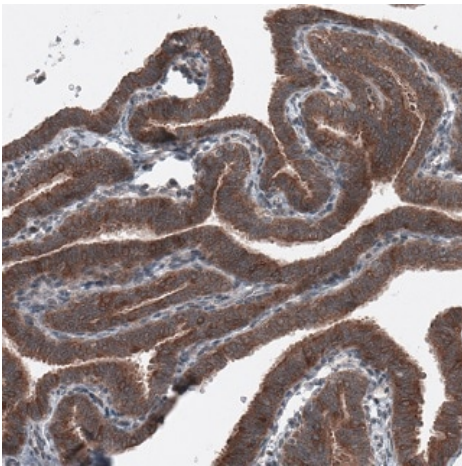
Immunohistochemical analysis of formalin-fixed and paraffin-embedded Human testis tissue labeling B Raf with ab220032 at 1/500 dilution shows cytoplasmic immunoreactivity in seminiferous tubules.

Immunohistochemistry (Formalin/PFA-fixed paraffin-embedded sections) - Anti-BRAF antibody [CL4004] (ab220032)



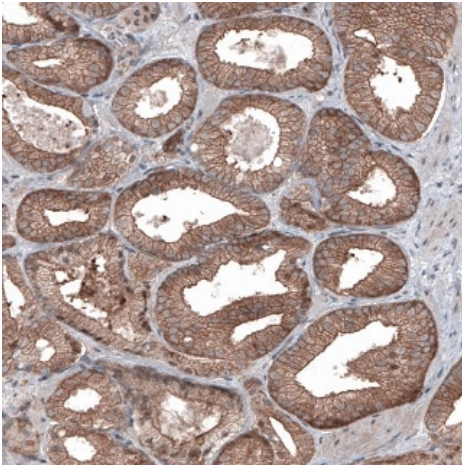
Immunohistochemical analysis of formalin-fixed and paraffin-embedded Human breast cancer tissue labeling B Raf with ab220032 at 1/500 dilution shows moderate cytoplasmic immunoreactivity in tumor cells.

Immunohistochemistry (Formalin/PFA-fixed paraffin-embedded sections) - Anti-BRAF antibody [CL4004] (ab220032)



Immunohistochemical analysis of formalin-fixed and paraffin-embedded Human fallopian tube tissue labeling B Raf with ab220032 at 1/500 dilution shows strong cytoplasmic immunoreactivity in glandular cells.

Immunohistochemistry (Formalin/PFA-fixed paraffin-embedded sections) - Anti-BRAF antibody [CL4004] (ab220032)



Immunohistochemical analysis of formalin-fixed and paraffin-embedded Human prostate cancer tissue labeling B Raf with ab220032 at 1/500 dilution shows moderate cytoplasmic immunoreactivity in tumor cells.

Immunohistochemistry (Formalin/PFA-fixed paraffin-embedded sections) - Anti-BRAF antibody [CL4004] (ab220032)

Please note: All products are "FOR RESEARCH USE ONLY. NOT FOR USE IN DIAGNOSTIC PROCEDURES"

Our Abpromise to you: Quality guaranteed and expert technical support

- Replacement or refund for products not performing as stated on the datasheet
- Valid for 12 months from date of delivery
- Response to your inquiry within 24 hours
- We provide support in Chinese, English, French, German, Japanese and Spanish
- Extensive multi-media technical resources to help you
- We investigate all quality concerns to ensure our products perform to the highest standards

If the product does not perform as described on this datasheet, we will offer a refund or replacement. For full details of the Abpromise, please visit <https://www.abcam.cn/abpromise> or contact our technical team.

Terms and conditions

- Guarantee only valid for products bought direct from Abcam or one of our authorized distributors