

Anti-Bovine Serum Albumin antibody [1C12] ab79827

[1 References](#) [2 图像](#)

概述

产品名称	Anti-Bovine Serum Albumin抗体[1C12]
描述	小鼠单克隆抗体[1C12] to Bovine Serum Albumin
宿主	Mouse
特异性	This antibody reacts specifically with BSA. It does not cross react with Human Serum Albumin or Albumin from other species.
经测试应用	适用于: ELISA, WB
种属反应性	与反应: Cow 不与反应: Rabbit, Human
免疫原	Full length protein. This information is proprietary to Abcam and/or its suppliers.
阳性对照	WB: Bovine serum albumin.
常规说明	<p>The Life Science industry has been in the grips of a reproducibility crisis for a number of years. Abcam is leading the way in addressing this with our range of recombinant monoclonal antibodies and knockout edited cell lines for gold-standard validation. Please check that this product meets your needs before purchasing.</p> <p>If you have any questions, special requirements or concerns, please send us an inquiry and/or contact our Support team ahead of purchase. Recommended alternatives for this product can be found below, along with publications, customer reviews and Q&As</p>

性能

形式	Liquid
存放说明	Shipped at 4°C. Upon delivery aliquot and store at -20°C. Avoid freeze / thaw cycles.
存储溶液	Constituents: 1.21% Tris, 0.75% Glycine, 2% Sucrose
纯度	Protein A purified
克隆	单克隆
克隆编号	1C12
同种型	IgG1
轻链类型	kappa

应用

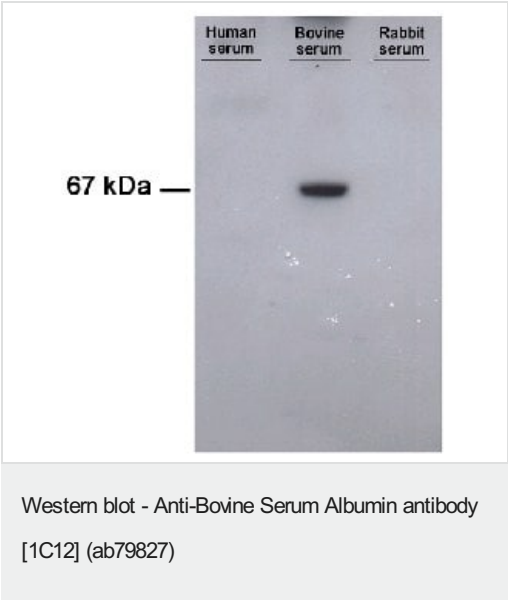
The Abpromise guarantee Abpromise™承诺保证使用ab79827于以下的经测试应用

“应用说明”部分 下显示的仅为推荐的起始稀释度;实际最佳的稀释度/浓度应由使用者检定。

应用	Ab评论	说明
ELISA		1/20000 - 1/100000.
WB		1/2000 - 1/10000. Predicted molecular weight: 69 kDa.

靶标

图片



All lanes : Anti-Bovine Serum Albumin antibody [1C12] (ab79827)
at 1/2000 dilution

- Lane 1 :** Human Serum
- Lane 2 :** Bovine Serum
- Lane 3 :** Rabbit Serum

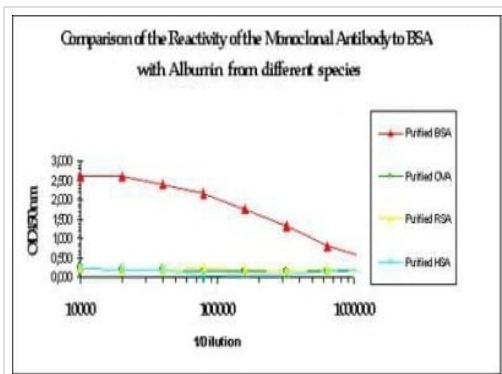
Lysates/proteins at 10 µl per lane.

Secondary
All lanes : Goat anti-mouse IgG (H+L) peroxidase conjugate at
1/4000 dilution

Predicted band size: 69 kDa
Observed band size: 67 kDa

Exposure time: 1 minute

Non-denaturing SDS-PAGE (7.5%).



Graph showing comparison of the reactivity of **ab79287** with Bovine Serum Albumin, Ovalbumin, Rabbit Serum Albumin and Human Serum Albumin.

ELISA - Anti-Bovine Serum Albumin antibody [1C12]
(ab79827)

Please note: All products are "FOR RESEARCH USE ONLY. NOT FOR USE IN DIAGNOSTIC PROCEDURES"

Our Abpromise to you: Quality guaranteed and expert technical support

- Replacement or refund for products not performing as stated on the datasheet
- Valid for 12 months from date of delivery
- Response to your inquiry within 24 hours
- We provide support in Chinese, English, French, German, Japanese and Spanish
- Extensive multi-media technical resources to help you
- We investigate all quality concerns to ensure our products perform to the highest standards

If the product does not perform as described on this datasheet, we will offer a refund or replacement. For full details of the Abpromise, please visit <https://www.abcam.cn/abpromise> or contact our technical team.

Terms and conditions

- Guarantee only valid for products bought direct from Abcam or one of our authorized distributors