

# Anti-Bovine Papilloma Virus E2 antibody [1E4] ab980

★★★★★ [2 Abreviews](#) [5 References](#) [1 图像](#)

### 概述

产品名称	Anti-Bovine Papilloma Virus E2抗体[1E4]
描述	小鼠单克隆抗体[1E4] to Bovine Papilloma Virus E2
宿主	Mouse
经测试应用	适用于: WB, IP, ICC/IF
种属反应性	与反应: Bovine papillomavirus
免疫原	Mapped to amino acids 250-280.
表位	Not Determined.
常规说明	<p>The Life Science industry has been in the grips of a reproducibility crisis for a number of years. Abcam is leading the way in addressing this with our range of recombinant monoclonal antibodies and knockout edited cell lines for gold-standard validation. Please check that this product meets your needs before purchasing.</p> <p>If you have any questions, special requirements or concerns, please send us an inquiry and/or contact our Support team ahead of purchase. Recommended alternatives for this product can be found below, along with publications, customer reviews and Q&amp;As</p>

### 性能

形式	Liquid
存放说明	Shipped at 4°C. Store at +4°C short term (1-2 weeks). Upon delivery aliquot. Store at -20°C or -80°C. Avoid freeze / thaw cycle.
存储溶液	pH: 7.4 Constituent: 50% Glycerol (glycerin, glycerine)
纯度	Protein A purified
克隆	单克隆
克隆编号	1E4
同种型	IgG1

### 应用

The Abpromise guarantee

**Abpromise™** 承诺保证使用ab980于以下的经测试应用

“应用说明”部分 下显示的仅为推荐的起始稀释度;实际最佳的稀释度/浓度应由使用者检定。

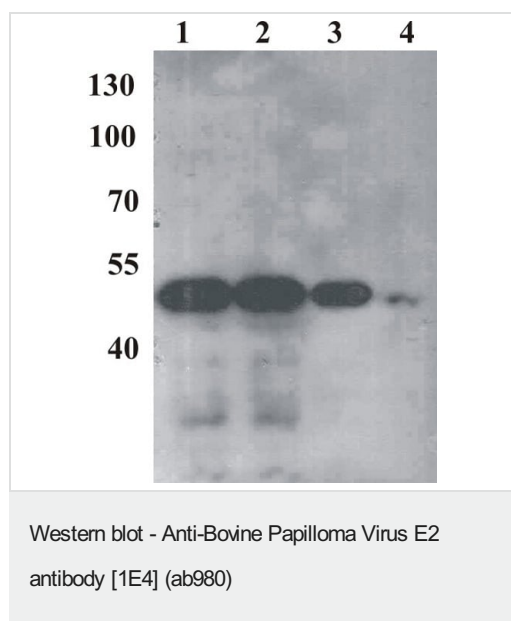
应用	Ab评论	说明
<b>WB</b>		1/1000 - 1/5000. Predicted molecular weight: 45 kDa. 1hr, RT. Dilute in a diluent containing 2% non-fat dry milk in TBST. (Background can be reduced by adding NaCl up to a concentration of 1.5 M.)
<b>IP</b>		Use at an assay dependent concentration. To isolate E2Tag-tagged proteins and associated proteins/protein binding partners. Use protein G-agarose.
<b>ICC/IF</b>		1/500 - 1/1000. 1hr, RT. Dilute in a diluent containing 1% BSA in PBS.

## 靶标

**相关性** The bovine papilloma virus E2 protein is the master regulator of papillomavirus replication and transcription. Binds to the E2RE response element (5'-ACCNNNNNNGGT-3') present in multiple copies in the regulatory region. Can either activate or repress transcription depending on E2RE's position with regards to proximal promoter elements. Repression occurs by sterically hindering the assembly of the transcription initiation complex. The E1-E2 complex binds to the origin of DNA replication.

**细胞定位** Host cell nucleus

## 图片



**All lanes :** Anti-Bovine Papilloma Virus E2 antibody [1E4] (ab980)

**Lane 1 :** Purified recombinant Bovine Papillomavirus E2 protein at 15000 µg

**Lane 2 :** Purified recombinant Bovine Papillomavirus E2 protein at 10000 µg

**Lane 3 :** Purified recombinant Bovine Papillomavirus E2 protein at 5000 µg

**Lane 4 :** Purified recombinant Bovine Papillomavirus E2 protein at 1000 µg

**Predicted band size:** 45 kDa

**Please note:** All products are "FOR RESEARCH USE ONLY. NOT FOR USE IN DIAGNOSTIC PROCEDURES"

### **Our Abpromise to you: Quality guaranteed and expert technical support**

---

- Replacement or refund for products not performing as stated on the datasheet
- Valid for 12 months from date of delivery
- Response to your inquiry within 24 hours
  
- We provide support in Chinese, English, French, German, Japanese and Spanish
- Extensive multi-media technical resources to help you
- We investigate all quality concerns to ensure our products perform to the highest standards

If the product does not perform as described on this datasheet, we will offer a refund or replacement. For full details of the Abpromise, please visit <https://www.abcam.cn/abpromise> or contact our technical team.

### **Terms and conditions**

---

- Guarantee only valid for products bought direct from Abcam or one of our authorized distributors