

Anti-BNP antibody ab19645

★★★★★ [2 Abreviews](#) [34 References](#) [1 图像](#)

概述

产品名称	Anti-BNP抗体
描述	兔多克隆抗体to BNP
宿主	Rabbit
经测试应用	适用于: WB
种属反应性	与反应: Rat, Human
免疫原	Synthetic peptide corresponding to Human BNP conjugated to bovine thyroglobulin.
常规说明	<p>The Life Science industry has been in the grips of a reproducibility crisis for a number of years. Abcam is leading the way in addressing this with our range of recombinant monoclonal antibodies and knockout edited cell lines for gold-standard validation. Please check that this product meets your needs before purchasing.</p> <p>If you have any questions, special requirements or concerns, please send us an inquiry and/or contact our Support team ahead of purchase. Recommended alternatives for this product can be found below, along with publications, customer reviews and Q&As</p>

性能

形式	Liquid
存放说明	Shipped at 4°C. Upon delivery aliquot and store at -20°C. Avoid freeze / thaw cycles.
存储溶液	Constituents: PBS, 1% BSA
纯度	Whole antiserum
克隆	多克隆
同种型	IgG

应用

The Abpromise guarantee **Abpromise™**承诺保证使用ab19645于以下的经测试应用

“应用说明”部分 下显示的仅为推荐的起始稀释度;实际最佳的稀释度/浓度应由使用者检定。

应用	Ab评论	说明
WB	★★★★★ (2)	1/500. Detects a band of approximately 18 kDa (predicted molecular weight: 15 kDa).

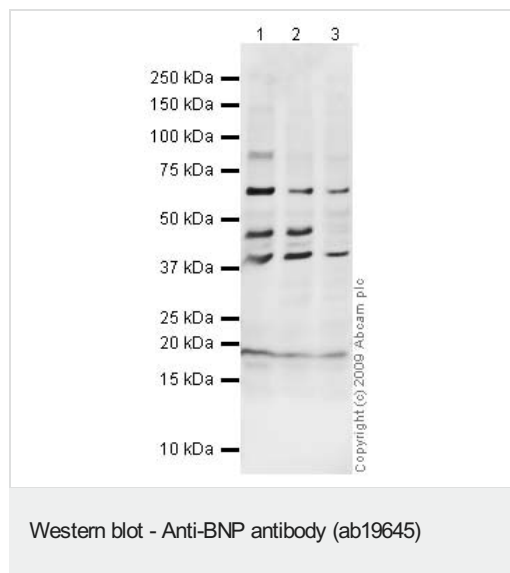
靶标

相关性

Brain natriuretic peptide (BNP) circulates in blood as a peptide hormone with natriuretic, vasodilatory and renin inhibitory properties. BNP is secreted predominantly by the left ventricular myocytes in response to volume expansion and pressure overload. BNP belongs to a family of structurally similar peptide hormones, which includes atrial natriuretic peptide (ANP), BNP, C type natriuretic peptide (CNP) and urodilatin. These peptides are characterized by a common 17 amino acid ring structure with a disulfide bond between two cysteine residues. This ring structure shows high homology between different natriuretic peptides (eleven of the 17 amino acid residues are homologous in the ring of each of the natriuretic peptides). BNP is a 32 amino acid peptide with disulfide bond between the cysteine residues Cys10 and Cys26. In earlier studies it has been demonstrated that BNP concentration in blood increases with the severity of congestive heart failure. Quantitative measurement of BNP in blood provides an objective indicator of congestive heart failure severity.

细胞定位 Secreted

图片



All lanes : Anti-BNP antibody (ab19645) at 1/500 dilution

Lane 1 : SK N BE (Human neuroblastoma) Whole Cell Lysate

Lane 2 : TE 671 (Human Rhabdomyosarcoma) Whole Cell Lysate

Lane 3 : SW480 (Human colon adenocarcinoma cell line) Whole Cell Lysate

Lysates/proteins at 10 µg per lane.

Secondary

All lanes : Goat polyclonal to Rabbit IgG - H&L - Pre-Adsorbed (HRP) at 1/3000 dilution

Predicted band size: 15 kDa

Observed band size: 18 kDa

Additional bands at: 40 kDa, 48 kDa, 60 kDa. We are unsure as to the identity of these extra bands.

Please note: All products are "FOR RESEARCH USE ONLY. NOT FOR USE IN DIAGNOSTIC PROCEDURES"

Our Abpromise to you: Quality guaranteed and expert technical support

- Replacement or refund for products not performing as stated on the datasheet
- Valid for 12 months from date of delivery
- Response to your inquiry within 24 hours

- We provide support in Chinese, English, French, German, Japanese and Spanish
- Extensive multi-media technical resources to help you
- We investigate all quality concerns to ensure our products perform to the highest standards

If the product does not perform as described on this datasheet, we will offer a refund or replacement. For full details of the Abpromise, please visit <https://www.abcam.cn/abpromise> or contact our technical team.

Terms and conditions

- Guarantee only valid for products bought direct from Abcam or one of our authorized distributors