

Biotin Anti-TRAIL antibody [N2B2] ab95531

2 References **1 图像**

概述

产品名称	生物素Anti-TRAIL抗体[N2B2]
描述	生物素大鼠单克隆抗体[N2B2] to TRAIL
宿主	Rat
偶联物	Biotin
经测试应用	适用于: Flow Cyt
种属反应性	与反应: Recombinant fragment
免疫原	Tissue, cells or virus corresponding to Mouse TRAIL. Mouse TRAIL-transfected 2PK-3 cells.
阳性对照	Mouse TRAIL transfected cells
常规说明	<p>ab95531 inhibits IL2- or IL15-activated NK cell cytotoxicity against Mouse fibrosarcoma L929 target cells.</p> <p>The Life Science industry has been in the grips of a reproducibility crisis for a number of years. Abcam is leading the way in addressing this with our range of recombinant monoclonal antibodies and knockout edited cell lines for gold-standard validation. Please check that this product meets your needs before purchasing.</p> <p>If you have any questions, special requirements or concerns, please send us an inquiry and/or contact our Support team ahead of purchase. Recommended alternatives for this product can be found below, along with publications, customer reviews and Q&As</p>

性能

形式	Liquid
存放说明	Shipped at 4°C. Store at +4°C short term (1-2 weeks). Store at -20°C or -80°C. Avoid freeze / thaw cycle.
存储溶液	<p>pH: 7.20</p> <p>Preservative: 0.09% Sodium azide</p> <p>Constituents: 0.87% Sodium chloride, PBS</p>
纯度	Protein G purified
Primary antibody说明	ab95531 inhibits IL2- or IL15-activated NK cell cytotoxicity against Mouse fibrosarcoma L929 target cells.

克隆	单克隆
克隆编号	N2B2
同种型	IgG2a
轻链类型	kappa

应用

The Abpromise guarantee **Abpromise™承诺保证使用ab95531于以下的经测试应用**

“应用说明”部分 下显示的仅为推荐的起始稀释度;实际最佳的稀释度/浓度应由使用者检定。

应用	Ab评论	说明
Flow Cyt		<p>Use 0.125-0.25µg for 10⁵⁻⁸ cells. in a final volume of 100 µL.</p> <p>ab19445 Rat monoclonal IgG2a is suitable for use as an</p>

靶标

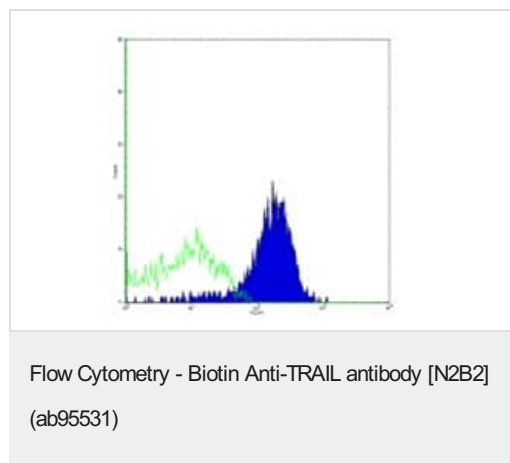
功能	Cytokine that binds to TNFRSF10A/TRAILR1, TNFRSF10B/TRAILR2, TNFRSF10C/TRAILR3, TNFRSF10D/TRAILR4 and possibly also to TNFRSF11B/OPG. Induces apoptosis. Its activity may be modulated by binding to the decoy receptors TNFRSF10C/TRAILR3, TNFRSF10D/TRAILR4 and TNFRSF11B/OPG that cannot induce apoptosis.
----	---

组织特异性	Widespread; most predominant in spleen, lung and prostate.
--------------	--

序列相似性 Belongs to the tumor necrosis factor family.

细胞定位 Membrane.

图片



ab95531, at 0.125 µg, staining of TRAIL transfected cells (filled) or with Rat IgG2a Isotype Control (open) followed by Streptavidin PE by Flow Cytometry. Total viable cells were used for analysis.

Please note: All products are "FOR RESEARCH USE ONLY. NOT FOR USE IN DIAGNOSTIC PROCEDURES"

Our Abpromise to you: Quality guaranteed and expert technical support

- Replacement or refund for products not performing as stated on the datasheet
- Valid for 12 months from date of delivery
- Response to your inquiry within 24 hours

- We provide support in Chinese, English, French, German, Japanese and Spanish
- Extensive multi-media technical resources to help you
- We investigate all quality concerns to ensure our products perform to the highest standards

If the product does not perform as described on this datasheet, we will offer a refund or replacement. For full details of the Abpromise, please visit <https://www.abcam.cn/abpromise> or contact our technical team.

Terms and conditions

- Guarantee only valid for products bought direct from Abcam or one of our authorized distributors