

Biotin Anti-DDDDK tag (Binds to FLAG® tag sequence) antibody [FG4R] ab173832

1 图像

概述

产品名称	生物素Anti-DDDDK tag (Binds to FLAG® tag sequence)抗体[FG4R]
描述	生物素小鼠单克隆抗体[FG4R] to DDDDK tag (Binds to FLAG® tag sequence)
宿主	Mouse
偶联物	Biotin
经测试应用	适用于: WB
种属反应性	与反应: Species independent
免疫原	Synthetic peptide corresponding to DDDDK tag (Binds to FLAG® tag sequence) conjugated to keyhole limpet haemocyanin. Sequence: DYKDDDDK

 [Run BLAST with](#)

 [Run BLAST with](#)

阳性对照 E. coli lysate containing a multi-epitope tagged protein.

常规说明 FLAG® is a registered trade mark of Sigma Aldrich Biotechnology LP. It is used here for informational purposes only.

The Life Science industry has been in the grips of a reproducibility crisis for a number of years. Abcam is leading the way in addressing this with our range of recombinant monoclonal antibodies and knockout edited cell lines for gold-standard validation. Please check that this product meets your needs before purchasing.

If you have any questions, special requirements or concerns, please send us an inquiry and/or contact our Support team ahead of purchase. Recommended alternatives for this product can be found below, along with publications, customer reviews and Q&As

性能

形式	Liquid
存放说明	Shipped at 4°C. Store at +4°C short term (1-2 weeks). Upon delivery aliquot. Store at +4°C. Do Not Freeze.
存储溶液	Preservative: 0.02% Sodium azide Constituent: 99% PBS

纯度	Protein A purified
克隆	单克隆
克隆编号	FG4R
同种型	IgG2b

应用

The Abpromise guarantee **Abpromise™承诺保证使用ab173832于以下的经测试应用**

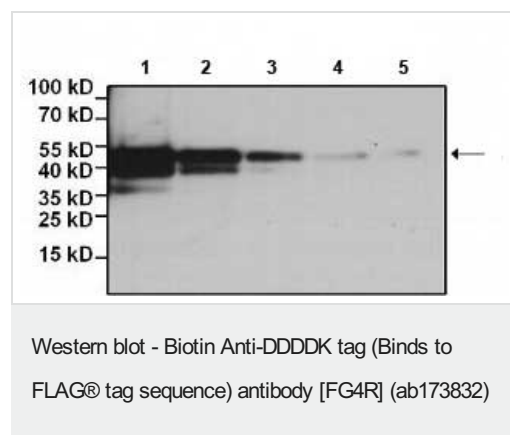
“应用说明”部分下显示的仅为推荐的起始稀释度;实际最佳的稀释度/浓度应由使用者检定。

应用	Ab评论	说明
WB		Use at an assay dependent concentration.

靶标

相关性	This is a useful tool for the localisation and characterisation of DDDDK tagged proteins (Binds to FLAG® tag sequence).
-----	---

图片



All lanes : Biotin Anti-DDDDK tag (Binds to FLAG® tag sequence)
antibody [FG4R] (ab173832) at 1/1000 dilution

Lane 1 : E. coli lysate containing a multi-epitope tagged protein at 0.25 µg

Lane 2 : E. coli lysate containing a multi-epitope tagged protein at 0.125 µg

Lane 3 : E. coli lysate containing a multi-epitope tagged protein at 0.05999999986588955 µg

Lane 4 : E. coli lysate containing a multi-epitope tagged protein at 0.0299999993294477 µg

Lane 5 : E. coli lysate containing a multi-epitope tagged protein at 0.0149999996647239 µg

Secondary

All lanes : Streptavidin-HRP at 1/20000 dilution

Developed using the ECL technique.

Note: Proteins were transferred to a PVDF membrane and blocked with 5% BSA/TBST for at least 1 hour. Incubation with ab173832

was for 1 hour at room temperature. Incubation with secondary antibody was for 30 minutes at room temperature.

Please note: All products are "FOR RESEARCH USE ONLY. NOT FOR USE IN DIAGNOSTIC PROCEDURES"

Our Abpromise to you: Quality guaranteed and expert technical support

- Replacement or refund for products not performing as stated on the datasheet
- Valid for 12 months from date of delivery
- Response to your inquiry within 24 hours
- We provide support in Chinese, English, French, German, Japanese and Spanish
- Extensive multi-media technical resources to help you
- We investigate all quality concerns to ensure our products perform to the highest standards

If the product does not perform as described on this datasheet, we will offer a refund or replacement. For full details of the Abpromise, please visit <https://www.abcam.cn/abpromise> or contact our technical team.

Terms and conditions

- Guarantee only valid for products bought direct from Abcam or one of our authorized distributors