

Biotin Anti-CD63 antibody [MEM-259] ab134331

★★★★★ [1 Abreviews](#) [6 References](#) [3 图像](#)

概述

| | |
|-------|--|
| 产品名称 | 生物素Anti-CD63抗体[MEM-259] |
| 描述 | 生物素小鼠单克隆抗体[MEM-259] to CD63 |
| 宿主 | Mouse |
| 偶联物 | Biotin |
| 经测试应用 | 适用于: Flow Cyt |
| 种属反应性 | 与反应: Human |
| 免疫原 | Tissue, cells or virus corresponding to Human CD63. HPB-ALL T cell line |
| 阳性对照 | Activated platelets, neutrophils and basophils. Human spleen tissue. |
| 常规说明 | <p>The antibody is conjugated with Biotin-LC-NHS under optimum conditions. The reagent is free of unconjugated biotin.</p> <p>The Life Science industry has been in the grips of a reproducibility crisis for a number of years. Abcam is leading the way in addressing this with our range of recombinant monoclonal antibodies and knockout edited cell lines for gold-standard validation. Please check that this product meets your needs before purchasing.</p> <p>If you have any questions, special requirements or concerns, please send us an inquiry and/or contact our Support team ahead of purchase. Recommended alternatives for this product can be found below, along with publications, customer reviews and Q&As</p> |

性能

| | |
|------|---|
| 形式 | Liquid |
| 存放说明 | Shipped at 4°C. Store at +4°C short term (1-2 weeks). Store at -20°C or -80°C. Avoid freeze / thaw cycle. |
| 存储溶液 | <p>pH: 7.40</p> <p>Preservative: 0.1% Sodium azide</p> <p>Constituent: 99% PBS</p> |
| 纯度 | Size exclusion |
| 克隆 | 单克隆 |
| 克隆编号 | MEM-259 |
| 同种型 | IgG1 |

应用

The Abpromise guarantee **Abpromise™**承诺保证使用ab134331于以下的经测试应用

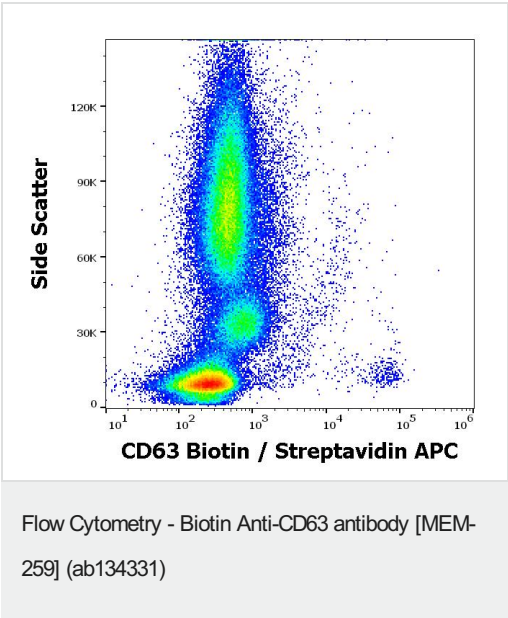
“应用说明”部分 下显示的仅为推荐的起始稀释度;实际最佳的稀释度/浓度应由使用者检定。

| 应用 | Ab评论 | 说明 |
|----------|------|--|
| Flow Cyt | | Use at an assay dependent concentration. |

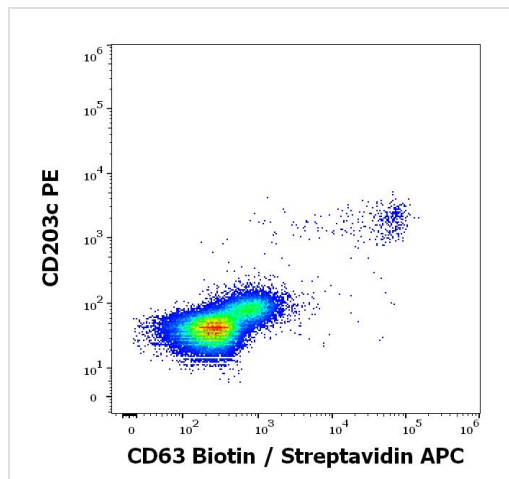
靶标

| | |
|-------|--|
| 功能 | This antigen is associated with early stages of melanoma tumor progression. May play a role in growth regulation. |
| 组织特异性 | Dysplastic nevi, radial growth phase primary melanomas, hematopoietic cells, tissue macrophages. |
| 序列相似性 | Belongs to the tetraspanin (TM4SF) family. |
| 细胞定位 | Cell membrane. Lysosome membrane. Late endosome membrane. Also found in Weibel-Palade bodies of endothelial cells. Located in platelet dense granules. |

图片

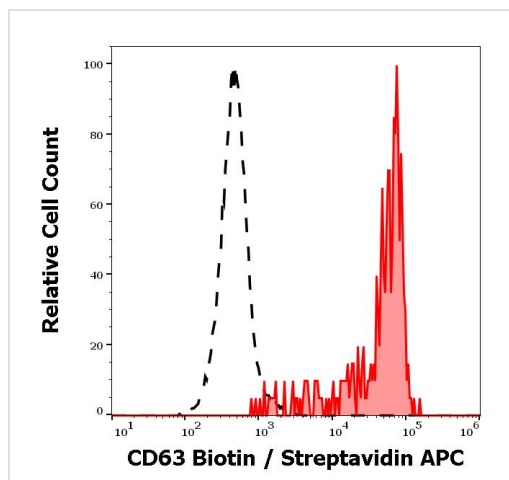


Flow cytometry multicolor surface staining of IgE stimulated peripheral blood mononuclear cells stained using ab134331 (concentration in sample 0.6 µg/mL, Streptavidin APC).



Flow Cytometry - Biotin Anti-CD63 antibody [MEM-259] (ab134331)

Flow cytometry multicolor surface staining of IgE stimulated peripheral blood mononuclear cells stained using ab134331 (concentration in sample 0.6 µg/mL, Streptavidin APC) and anti-human CD203c PE antibody (20 µL reagent / 100 µL of peripheral whole blood).



Flow Cytometry - Biotin Anti-CD63 antibody [MEM-259] (ab134331)

Flow Cytometry analysis of (surface staining) of IgE stimulated human peripheral whole blood using ab134331 (concentration in sample 0.6 µg/mL, Streptavidin APC). CD63 positive CD203c positive basophil granulocytes (red-filled) from neutrophil granulocytes (black-dashed).

Please note: All products are "FOR RESEARCH USE ONLY. NOT FOR USE IN DIAGNOSTIC PROCEDURES"

Our Abpromise to you: Quality guaranteed and expert technical support

- Replacement or refund for products not performing as stated on the datasheet
- Valid for 12 months from date of delivery
- Response to your inquiry within 24 hours

- We provide support in Chinese, English, French, German, Japanese and Spanish
- Extensive multi-media technical resources to help you
- We investigate all quality concerns to ensure our products perform to the highest standards

If the product does not perform as described on this datasheet, we will offer a refund or replacement. For full details of the Abpromise, please visit <https://www.abcam.cn/abpromise> or contact our technical team.

Terms and conditions

- Guarantee only valid for products bought direct from Abcam or one of our authorized distributors