

Biotin Anti-CD19 antibody [LT19] ab239237

1 图像

概述

产品名称	生物素Anti-CD19抗体[LT19]
描述	生物素小鼠单克隆抗体[LT19] to CD19
宿主	Mouse
偶联物	Biotin
经测试应用	适用于: Flow Cyt
种属反应性	与反应: Human
免疫原	Tissue, cells or virus corresponding to CD19. (Daudi human Burkitt lymphoma cell line).
阳性对照	Flow Cyt: Human peripheral blood cells.
常规说明	<p>The Life Science industry has been in the grips of a reproducibility crisis for a number of years. Abcam is leading the way in addressing this with our range of recombinant monoclonal antibodies and knockout edited cell lines for gold-standard validation. Please check that this product meets your needs before purchasing.</p> <p>If you have any questions, special requirements or concerns, please send us an inquiry and/or contact our Support team ahead of purchase. Recommended alternatives for this product can be found below, along with publications, customer reviews and Q&As</p>

性能

形式	Liquid
存放说明	Shipped at 4°C. Store at +4°C short term (1-2 weeks). Upon delivery aliquot. Store at -20°C long term. Avoid freeze / thaw cycle. Store In the Dark.
存储溶液	<p>pH: 7.40</p> <p>Preservative: 0.0975% Sodium azide</p> <p>Constituent: PBS</p>
纯度	Size exclusion
纯化说明	Purified antibody is conjugated with Biotin-LC-NHS under optimum conditions. The reagent is free of unconjugated biotin.
克隆	单克隆
克隆编号	LT19
同种型	IgG1

应用

The Abpromise guarantee **Abpromise™**承诺保证使用ab239237于以下的经测试应用

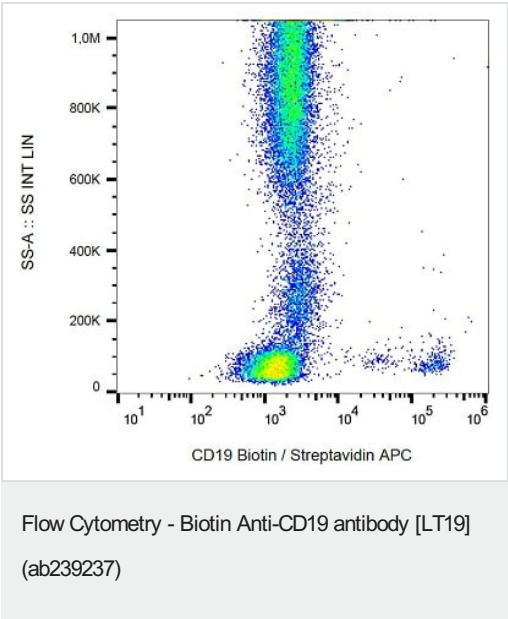
“应用说明”部分 下显示的仅为推荐的起始稀释度;实际最佳的稀释度/浓度应由使用者检定。

应用	Ab评论	说明
Flow Cyt		Use a concentration of 3 - 5 µg/ml.

靶标

功能	Assembles with the antigen receptor of B lymphocytes in order to decrease the threshold for antigen receptor-dependent stimulation.
疾病相关	Defects in CD19 are the cause of immunodeficiency common variable type 3 (CVID3) [MIM:613493]; also called antibody deficiency due to CD19 defect. CVID3 is a primary immunodeficiency characterized by antibody deficiency, hypogammaglobulinemia, recurrent bacterial infections and an inability to mount an antibody response to antigen. The defect results from a failure of B-cell differentiation and impaired secretion of immunoglobulins; the numbers of circulating B cells is usually in the normal range, but can be low.
序列相似性	Contains 2 Ig-like C2-type (immunoglobulin-like) domains.
翻译后修饰	Phosphorylated on serine and threonine upon DNA damage, probably by ATM or ATR. Phosphorylated on tyrosine following B-cell activation.
细胞定位	Membrane.

图片



Flow cytometric analysis of human peripheral blood labeling CD19 with ab239237 at 1/200 dilution. Surface staining. Gated on leukocytes.

Please note: All products are "FOR RESEARCH USE ONLY. NOT FOR USE IN DIAGNOSTIC PROCEDURES"

Our Abpromise to you: Quality guaranteed and expert technical support

- Replacement or refund for products not performing as stated on the datasheet
- Valid for 12 months from date of delivery
- Response to your inquiry within 24 hours

- We provide support in Chinese, English, French, German, Japanese and Spanish
- Extensive multi-media technical resources to help you
- We investigate all quality concerns to ensure our products perform to the highest standards

If the product does not perform as described on this datasheet, we will offer a refund or replacement. For full details of the Abpromise, please visit <https://www.abcam.cn/abpromise> or contact our technical team.

Terms and conditions

- Guarantee only valid for products bought direct from Abcam or one of our authorized distributors