


### Biotin Anti-CD14 antibody [MEM-18] ab21889

#### 2 图像

#### 概述

产品名称	生物素Anti-CD14抗体[MEM-18]
描述	生物素小鼠单克隆抗体[MEM-18] to CD14
宿主	Mouse
偶联物	Biotin
经测试应用	适用于: Flow Cyt
种属反应性	与反应: Human 预测可用于: Non human primates 
免疫原	Full length protein corresponding to CD14. A crude mixture of human urinary proteins precipitated by ammonium sulphate from the urine of a patient suffering from proteinuria.
常规说明	<p>Purified antibody is conjugated with Biotin-LC-NHS under optimum conditions. The reagent is free of unconjugated biotin.</p> <p>The Life Science industry has been in the grips of a reproducibility crisis for a number of years. Abcam is leading the way in addressing this with our range of recombinant monoclonal antibodies and knockout edited cell lines for gold-standard validation. Please check that this product meets your needs before purchasing.</p> <p>If you have any questions, special requirements or concerns, please send us an inquiry and/or contact our Support team ahead of purchase. Recommended alternatives for this product can be found below, along with publications, customer reviews and Q&amp;As</p>

#### 性能

形式	Liquid
存放说明	Shipped at 4°C. Store at +4°C short term (1-2 weeks). Store at -20°C or -80°C. Do Not Freeze.
存储溶液	<p>pH: 7.40</p> <p>Preservative: 0.097% Sodium azide</p> <p>Constituent: PBS</p>
纯度	Protein G purified
克隆	单克隆
克隆编号	MEM-18
同种型	IgG1

应用

**The Abpromise guarantee**      **Abpromise™**承诺保证使用ab21889于以下的经测试应用

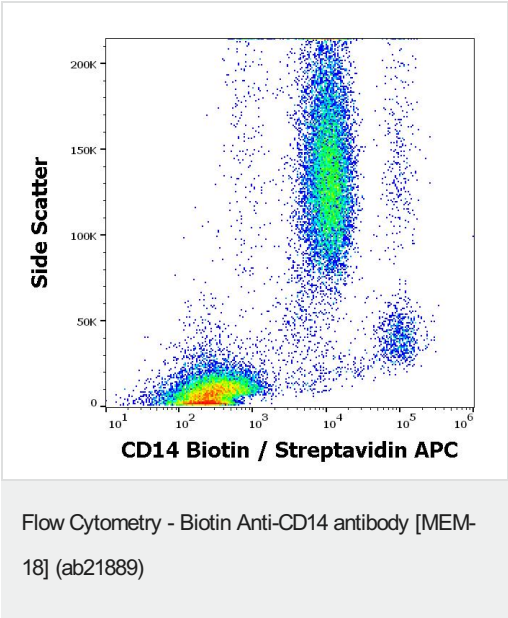
“应用说明”部分 下显示的仅为推荐的起始稀释度;实际最佳的稀释度/浓度应由使用者检定。

应用	Ab评论	说明
Flow Cyt		Use a concentration of 2 - 4 µg/ml.

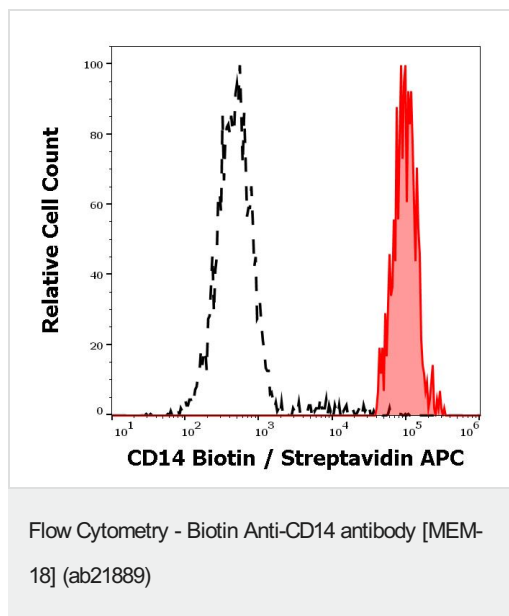
靶标

功能	Cooperates with MD-2 and TLR4 to mediate the innate immune response to bacterial lipopolysaccharide (LPS). Acts via MyD88, TIRAP and TRAF6, leading to NF-kappa-B activation, cytokine secretion and the inflammatory response. Up-regulates cell surface molecules, including adhesion molecules.
组织特异性	Expressed strongly on the surface of monocytes and weakly on the surface of granulocytes; also expressed by most tissue macrophages.
序列相似性	Contains 11 LRR (leucine-rich) repeats.
翻译后修饰	N- and O- glycosylated. O-glycosylated with a core 1 or possibly core 8 glycan.
细胞定位	Cell membrane.

图片



Flow cytometry surface staining pattern of human peripheral whole blood stained using ab21889 at 6 µg/ml.



Separation of human monocytes (red) from lymphocytes (black) in flow cytometry analysis (surface staining) of human peripheral whole blood using ab21889 at 6 µg/ml, Streptavidin.

**Please note:** All products are "FOR RESEARCH USE ONLY. NOT FOR USE IN DIAGNOSTIC PROCEDURES"

### Our Abpromise to you: Quality guaranteed and expert technical support

- Replacement or refund for products not performing as stated on the datasheet
- Valid for 12 months from date of delivery
- Response to your inquiry within 24 hours
- We provide support in Chinese, English, French, German, Japanese and Spanish
- Extensive multi-media technical resources to help you
- We investigate all quality concerns to ensure our products perform to the highest standards

If the product does not perform as described on this datasheet, we will offer a refund or replacement. For full details of the Abpromise, please visit <https://www.abcam.cn/abpromise> or contact our technical team.

### Terms and conditions

- Guarantee only valid for products bought direct from Abcam or one of our authorized distributors