


Biotin Anti-beta Actin antibody [RM112] - N-terminal ab222760

重组

3 图像

概述

产品名称	生物素Anti-beta Actin抗体[RM112] - N-terminal
描述	生物素兔单克隆抗体[RM112] to beta Actin - N-terminal
宿主	Rabbit
偶联物	Biotin
特异性	No cross reactivity with other isoforms of Actin.
经测试应用	适用于: ICC/IF, WB
种属反应性	与反应: Human 预测可用于: a wide range of other species 
免疫原	Synthetic peptide corresponding to beta Actin (N terminal).
阳性对照	ICC/IF: HeLa (human epithelial cell line from cervix adenocarcinoma) cells. WB: A431 (human epidermoid carcinoma cell line) cells.

性能

形式	Liquid
存放说明	Shipped at 4°C. Store at +4°C short term (1-2 weeks). Upon delivery aliquot. Store at -20°C long term. Avoid freeze / thaw cycle. Store In the Dark.
存储溶液	Preservative: 0.09% Sodium azide Constituents: 1% BSA, 50% Glycerol (glycerin, glycerine)
纯度	Protein A purified
克隆	单克隆
克隆编号	RM112
同种型	IgG

应用

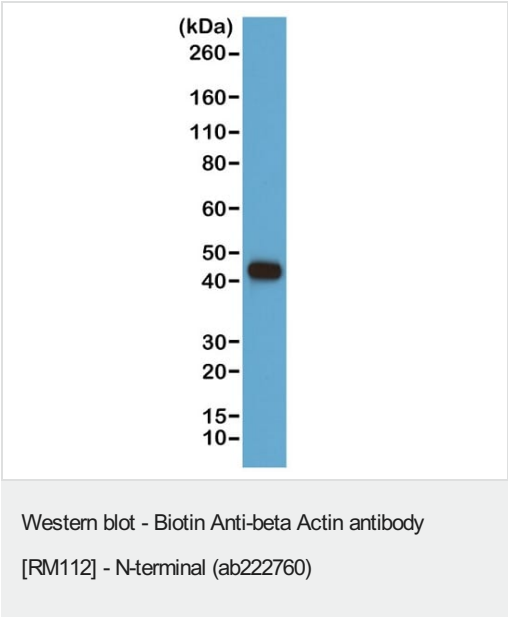
The Abpromise guarantee Abpromise™承诺保证使用ab222760于以下的经测试应用
“应用说明”部分 下显示的仅为推荐的起始稀释度;实际最佳的稀释度/浓度应由使用者检定。

应用	Ab评论	说明
ICC/IF		1/200.
WB		1/1000.

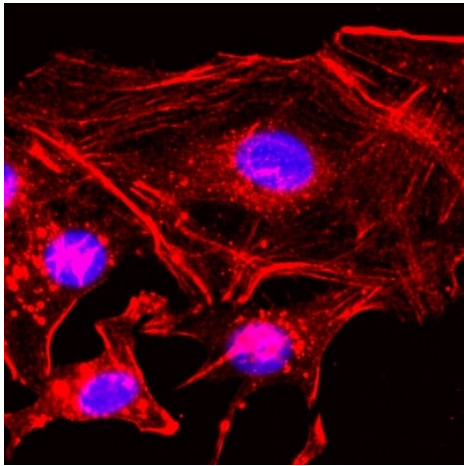
靶标

功能	Actins are highly conserved proteins that are involved in various types of cell motility and are ubiquitously expressed in all eukaryotic cells.
疾病相关	Defects in ACTB are a cause of dystonia juvenile-onset (DYTJ) [MIM:607371]. DYTJ is a form of dystonia with juvenile onset. Dystonia is defined by the presence of sustained involuntary muscle contraction, often leading to abnormal postures. DYTJ patients manifest progressive, generalized, dopa-unresponsive dystonia, developmental malformations and sensory hearing loss.
序列相似性	Belongs to the actin family.
翻译后修饰	ISGylated.
细胞定位	Cytoplasm > cytoskeleton. Localized in cytoplasmic mRNP granules containing untranslated mRNAs.

图片



Biotin Anti-beta Actin antibody [RM112] - N-terminal (ab222760) at 1/1000 dilution + A431 cell lysate



HeLa (human epithelial cell line from cervix adenocarcinoma) cells stained for beta Actin (red) using ab222760 at a 1/200 dilution in ICC/IF. Nuclei counterstain DAPI (blue).

Immunocytochemistry/ Immunofluorescence - Biotin
Anti-beta Actin antibody [RM112] - N-terminal
(ab222760)

Why choose a
recombinant antibody?



Research with
confidence
Consistent and
reproducible results



Long-term and
scalable supply
Recombinant
technology



Success from the
first experiment
Confirmed
specificity



Ethical standards
compliant
Animal-free
production

Biotin Anti-beta Actin antibody [RM112] - N-terminal
(ab222760)

Please note: All products are "FOR RESEARCH USE ONLY. NOT FOR USE IN DIAGNOSTIC PROCEDURES"

Our Abpromise to you: Quality guaranteed and expert technical support

- Replacement or refund for products not performing as stated on the datasheet

- Valid for 12 months from date of delivery
- Response to your inquiry within 24 hours
- We provide support in Chinese, English, French, German, Japanese and Spanish
- Extensive multi-media technical resources to help you
- We investigate all quality concerns to ensure our products perform to the highest standards

If the product does not perform as described on this datasheet, we will offer a refund or replacement. For full details of the Abpromise, please visit <https://www.abcam.cn/abpromise> or contact our technical team.

Terms and conditions

- Guarantee only valid for products bought direct from Abcam or one of our authorized distributors