

### Biotin Anti-beta 2 Microglobulin antibody [B2M-01] ab21899

[2 References](#)   [2 图像](#)

#### 概述

产品名称	生物素Anti-beta 2 Microglobulin抗体[B2M-01]
描述	生物素小鼠单克隆抗体[B2M-01] to beta 2 Microglobulin
宿主	Mouse
偶联物	Biotin
特异性	This antibody reacts with beta 2 Microglobulin associated with cell-surface MHC Class I molecules and other membrane antigens as well as with soluble beta 2 Microglobulin.
经测试应用	<b>适用于:</b> IHC-P, Flow Cyt
种属反应性	<b>与反应:</b> Human <b>不与反应:</b> Mouse, Rabbit, Chicken, Cow, Dog
免疫原	Full length native protein (purified) (Human).
阳性对照	This antibody gave a positive result in IHC in the following FFPE tissue: Human normal lung. Flow Cytometry: Human peripheral blood.
常规说明	<p>The Life Science industry has been in the grips of a reproducibility crisis for a number of years. Abcam is leading the way in addressing this with our range of recombinant monoclonal antibodies and knockout edited cell lines for gold-standard validation. Please check that this product meets your needs before purchasing.</p> <p>If you have any questions, special requirements or concerns, please send us an inquiry and/or contact our Support team ahead of purchase. Recommended alternatives for this product can be found below, along with publications, customer reviews and Q&amp;As</p>

#### 性能

形式	Liquid
存放说明	Shipped at 4°C. Store at +4°C short term (1-2 weeks). Store at -20°C or -80°C. Avoid freeze / thaw cycle.
存储溶液	pH: 7.40 Preservative: 0.097% Sodium azide Constituent: PBS
纯度	Protein A purified
克隆	单克隆

克隆编号

B2M-01

同种型

IgG2a

应用

The Abpromise guarantee      **Abpromise™**承诺保证使用ab21899于以下的经测试应用

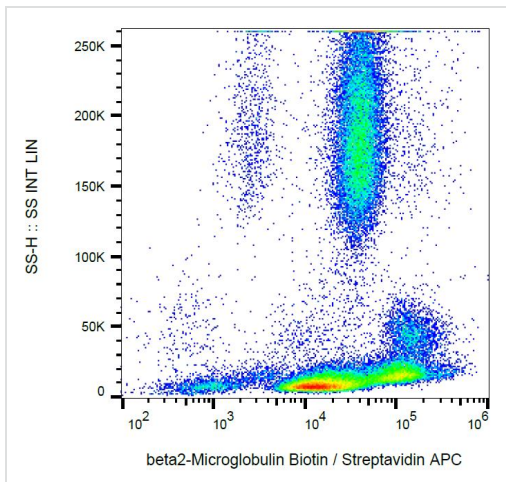
“应用说明”部分 下显示的仅为推荐的起始稀释度;实际最佳的稀释度/浓度应由使用者检定。

应用	Ab评论	说明
IHC-P		Use a concentration of 10 µg/ml.
Flow Cyt		Use a concentration of 1 - 2 µg/ml.

靶标

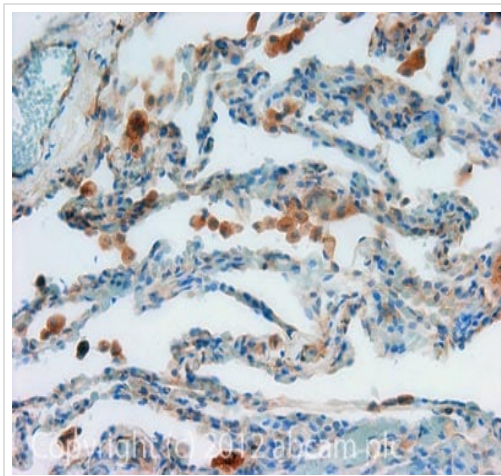
功能	Component of the class I major histocompatibility complex (MHC). Involved in the presentation of peptide antigens to the immune system.
疾病相关	Defects in B2M are the cause of hypercatabolic hypoproteinemia (HYCATHYP) [MIM:241600]. Affected individuals show marked reduction in serum concentrations of immunoglobulin and albumin, probably due to rapid degradation. Note=Beta-2-microglobulin may adopt the fibrillar configuration of amyloid in certain pathologic states. The capacity to assemble into amyloid fibrils is concentration dependent. Persistently high beta(2)-microglobulin serum levels lead to amyloidosis in patients on long-term hemodialysis.
序列相似性	Belongs to the beta-2-microglobulin family. Contains 1 Ig-like C1-type (immunoglobulin-like) domain.
翻译后修饰	Glycation of Ile-21 is observed in long-term hemodialysis patients.
细胞定位	Secreted. Detected in serum and urine.

图片



Flow Cytometry - Biotin Anti-beta 2 Microglobulin antibody [B2M-01] (ab21899)

Flow cytometry analysis using anti-beta2 microglobulin (B2M-01) biotin for surface staining of beta2-microglobulin in human peripheral blood



Immunohistochemistry (Formalin/PFA-fixed paraffin-embedded sections) - Biotin Anti-beta 2 Microglobulin antibody [B2M-01] (ab21899)

IHC image of beta 2 Microglobulin staining in human normal lung formalin fixed paraffin embedded tissue section, performed on a Leica Bond™ system using the standard protocol B. The section was pre-treated using heat mediated antigen retrieval with sodium citrate buffer (pH6, epitope retrieval solution 1) for 20 mins. The section was then incubated with ab21899, 10µg/ml, for 15 mins at room temperature and detected using an HRP conjugated ABC system. DAB was used as the chromogen. The section was then counterstained with haematoxylin and mounted with DPX.

For other IHC staining systems (automated and non-automated) customers should optimize variable parameters such as antigen retrieval conditions, primary antibody concentration and antibody incubation times.

**Please note:** All products are "FOR RESEARCH USE ONLY. NOT FOR USE IN DIAGNOSTIC PROCEDURES"

### Our Abpromise to you: Quality guaranteed and expert technical support

- Replacement or refund for products not performing as stated on the datasheet
- Valid for 12 months from date of delivery
- Response to your inquiry within 24 hours
- We provide support in Chinese, English, French, German, Japanese and Spanish
- Extensive multi-media technical resources to help you
- We investigate all quality concerns to ensure our products perform to the highest standards

If the product does not perform as described on this datasheet, we will offer a refund or replacement. For full details of the Abpromise, please visit <https://www.abcam.cn/abpromise> or contact our technical team.

## Terms and conditions

---

- Guarantee only valid for products bought direct from Abcam or one of our authorized distributors