



Biotin Anti-6X His tag® antibody [HIS.H8] ab173828

1 图像

概述

产品名称	生物素Anti-6X His tag®抗体[HIS.H8]
描述	生物素小鼠单克隆抗体[HIS.H8] to 6X His tag®
宿主	Mouse
偶联物	Biotin
经测试应用	适用于: ELISA, IP, ICC/IF, WB
种属反应性	与反应: Species independent
免疫原	Synthetic peptide corresponding to 6X His tag® aa 1-6. Sequence: HHHHHH
	<div>  Run BLAST with </div> <div>  Run BLAST with </div>
阳性对照	E. coli lysate containing a multi-epitope tagged protein.
常规说明	<p>The Life Science industry has been in the grips of a reproducibility crisis for a number of years. Abcam is leading the way in addressing this with our range of recombinant monoclonal antibodies and knockout edited cell lines for gold-standard validation. Please check that this product meets your needs before purchasing.</p> <p>If you have any questions, special requirements or concerns, please send us an inquiry and/or contact our Support team ahead of purchase. Recommended alternatives for this product can be found below, along with publications, customer reviews and Q&As</p>

性能

形式	Liquid
存放说明	Shipped at 4°C. Upon delivery aliquot. Store at +4°C. Do Not Freeze.
存储溶液	Preservative: 0.02% Sodium azide Constituent: 99% PBS
纯度	Protein A purified
克隆	单克隆
克隆编号	HIS.H8
同种型	IgG2b

应用

The Abpromise guarantee **Abpromise™**承诺保证使用ab173828于以下的经测试应用

“应用说明”部分 下显示的仅为推荐的起始稀释度;实际最佳的稀释度/浓度应由使用者检定。

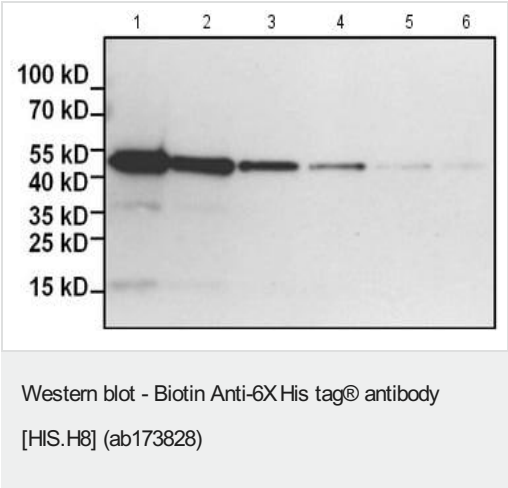
应用	Ab评论	说明
ELISA		Use at an assay dependent concentration.
IP		Use at an assay dependent concentration.
ICC/IF		1/500 - 1/2000.
WB		1/500 - 1/1000. Predicted molecular weight: 0.8 kDa.

靶标

相关性 The H-H-H-H-H-H motif is used as a tag on many recombinant proteins to facilitate purification. His-tags can be fused to the amino- or carboxy- termini of proteins in transfected or transformed cells.

细胞定位 Depends upon the localization of the parent protein tagged with hexahistidine.

图片



All lanes : Biotin Anti-6X His tag® antibody [HIS.H8] (ab173828) at 1/1000 dilution

Lane 1 : E. coli lysate containing a multi-epitope tagged protein at 0.5 µg

Lane 2 : E. coli lysate containing a multi-epitope tagged protein at 0.25 µg

Lane 3 : E. coli lysate containing a multi-epitope tagged protein at 0.125 µg

Lane 4 : E. coli lysate containing a multi-epitope tagged protein at 0.0599999986588955 µg

Lane 5 : E. coli lysate containing a multi-epitope tagged protein at 0.0299999993294477 µg

Lane 6 : E. coli lysate containing a multi-epitope tagged protein at 0.0149999996647239 µg

Secondary

All lanes : Streptavidin-HRP at 1/20000 dilution

Developed using the ECL technique.

Predicted band size: 0.8 kDa

Note: Predicted MW is for the His tag alone.

Please note: All products are "FOR RESEARCH USE ONLY. NOT FOR USE IN DIAGNOSTIC PROCEDURES"

Our Abpromise to you: Quality guaranteed and expert technical support

- Replacement or refund for products not performing as stated on the datasheet
- Valid for 12 months from date of delivery
- Response to your inquiry within 24 hours
- We provide support in Chinese, English, French, German, Japanese and Spanish
- Extensive multi-media technical resources to help you
- We investigate all quality concerns to ensure our products perform to the highest standards

If the product does not perform as described on this datasheet, we will offer a refund or replacement. For full details of the Abpromise, please visit <https://www.abcam.cn/abpromise> or contact our technical team.

Terms and conditions

- Guarantee only valid for products bought direct from Abcam or one of our authorized distributors