

# Anti-BIN1 antibody ab153912

[2 References](#) [4 图像](#)

### 概述

产品名称	Anti-BIN1抗体
描述	兔多克隆抗体to BIN1
宿主	Rabbit
经测试应用	适用于: WB, IHC-P, ICC/IF
种属反应性	与反应: Mouse, Human
免疫原	Recombinant fragment corresponding to Human BIN1 aa 1-300. Database link: <a href="#">O00499-1</a>
阳性对照	A431 and Mouse kidney whole cell lysates; Human U87 xenograft tissue; A431 cells.
常规说明	<p>The Life Science industry has been in the grips of a reproducibility crisis for a number of years. Abcam is leading the way in addressing this with our range of recombinant monoclonal antibodies and knockout edited cell lines for gold-standard validation. Please check that this product meets your needs before purchasing.</p> <p>If you have any questions, special requirements or concerns, please send us an inquiry and/or contact our Support team ahead of purchase. Recommended alternatives for this product can be found below, along with publications, customer reviews and Q&amp;As</p>

### 性能

形式	Liquid
存放说明	Shipped at 4°C. Upon delivery aliquot. Store at -20°C or -80°C. Avoid freeze / thaw cycle.
存储溶液	pH: 7.00 Preservative: 0.025% Proclin 300 Constituents: 79% PBS, 20% Glycerol (glycerin, glycerine)
纯度	Immunogen affinity purified
克隆	多克隆
同种型	IgG

### 应用

The Abpromise guarantee

**Abpromise™** 承诺保证使用ab153912于以下的经测试应用

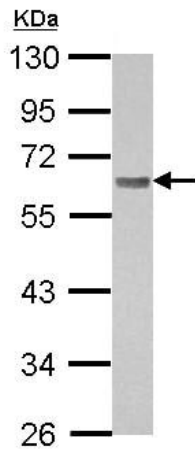
“应用说明”部分 下显示的仅为推荐的起始稀释度;实际最佳的稀释度/浓度应由使用者检定。

应用	Ab评论	说明
WB		1/500 - 1/3000. Predicted molecular weight: 65 kDa.
IHC-P		1/100 - 1/1000.
ICC/IF		1/100 - 1/1000.

## 靶标

<b>功能</b>	May be involved in regulation of synaptic vesicle endocytosis. May act as a tumor suppressor and inhibits malignant cell transformation.
<b>组织特异性</b>	Ubiquitous. Highest expression in the brain and muscle. Isoform IIA is expressed only in the brain where it is concentrated in axon initial segments and nodes of Ranvier. Isoform BIN1 is widely expressed with highest expression in skeletal muscle.
<b>疾病相关</b>	Defects in BIN1 are the cause of centronuclear myopathy autosomal recessive (ARCNM) [MIM:255200]; also known as autosomal recessive myotubular myopathy. Centronuclear myopathies are congenital muscle disorders characterized by progressive muscular weakness and wasting involving mainly limb girdle, trunk, and neck muscles. It may also affect distal muscles. Weakness may be present during childhood or adolescence or may not become evident until the third decade of life. Ptosis is a frequent clinical feature. The most prominent histopathologic features include high frequency of centrally located nuclei in muscle fibers not secondary to regeneration, radial arrangement of sarcoplasmic strands around the central nuclei, and predominance and hypotrophy of type 1 fibers.
<b>序列相似性</b>	Contains 1 BAR domain. Contains 1 SH3 domain.
<b>翻译后修饰</b>	Phosphorylated by protein kinase C.
<b>细胞定位</b>	Cytoplasm and Nucleus.

## 图片

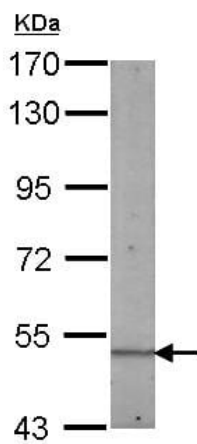


Western blot - Anti-BIN1 antibody (ab153912)

Anti-BIN1 antibody (ab153912) at 1/1000 dilution + A431 whole cell lysate at 30  $\mu$ g

**Predicted band size:** 65 kDa

10% SDS PAGE

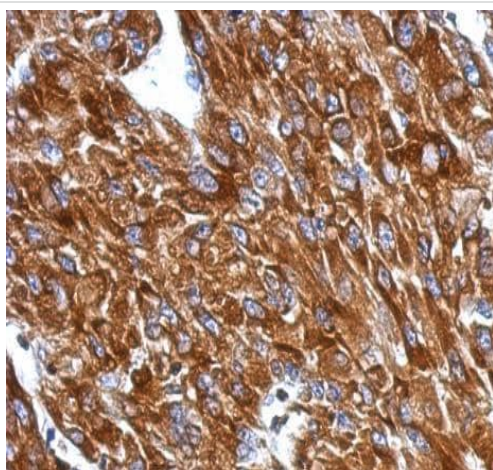


Western blot - Anti-BIN1 antibody (ab153912)

Anti-BIN1 antibody (ab153912) at 1/500 dilution + Mouse kidney whole cell lysate at 50  $\mu$ g

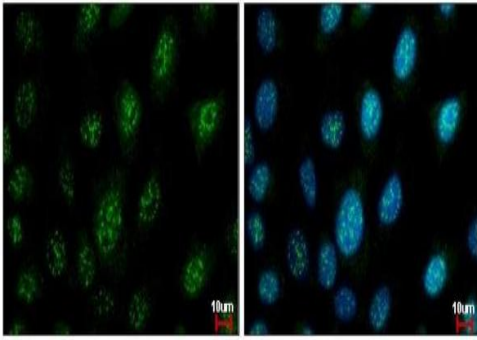
**Predicted band size:** 65 kDa

7.5% SDS PAGE



Immunohistochemistry (Formalin/PFA-fixed paraffin-embedded sections) - Anti-BIN1 antibody (ab153912)

Immunohistochemical analysis of paraffin-embedded Human U87 xenograft tissue labeling BIN1 with ab153912 at 1/500 dilution.



Immunofluorescent analysis of A431 cells (fixed in iced cold MeOH; 5 mins) labeling BIN1 with ab153912 at 1/500 dilution (green). Right image shows cells co-stained with Hoechst 33342 (blue).

Immunocytochemistry/ Immunofluorescence - Anti-BIN1 antibody (ab153912)

**Please note:** All products are "FOR RESEARCH USE ONLY. NOT FOR USE IN DIAGNOSTIC PROCEDURES"

### Our Abpromise to you: Quality guaranteed and expert technical support

---

- Replacement or refund for products not performing as stated on the datasheet
- Valid for 12 months from date of delivery
- Response to your inquiry within 24 hours
- We provide support in Chinese, English, French, German, Japanese and Spanish
- Extensive multi-media technical resources to help you
- We investigate all quality concerns to ensure our products perform to the highest standards

If the product does not perform as described on this datasheet, we will offer a refund or replacement. For full details of the Abpromise, please visit <https://www.abcam.cn/abpromise> or contact our technical team.

### Terms and conditions

---

- Guarantee only valid for products bought direct from Abcam or one of our authorized distributors