

Anti-Bim antibody ab7888

22 References **5 图像**

概述

产品名称	Anti-Bim抗体
描述	兔多克隆抗体to Bim
宿主	Rabbit
经测试应用	适用于: IHC-P, WB, ICC/IF
种属反应性	与反应: Rat, Human
免疫原	Peptide corresponding to amino acids 22 to 40 of human origin. The sequence is identical to that of mouse and differs from that of rat by one amino acid.
阳性对照	WB: Human colon and thymus tissue lysates, Rat Myeloma Cell lysate ICC/IF: K562 cells
常规说明	<p>The Life Science industry has been in the grips of a reproducibility crisis for a number of years. Abcam is leading the way in addressing this with our range of recombinant monoclonal antibodies and knockout edited cell lines for gold-standard validation. Please check that this product meets your needs before purchasing.</p> <p>If you have any questions, special requirements or concerns, please send us an inquiry and/or contact our Support team ahead of purchase. Recommended alternatives for this product can be found below, along with publications, customer reviews and Q&As</p>

性能

形式	Liquid
存放说明	Shipped at 4°C. Upon delivery aliquot and store at -20°C or -80°C. Avoid repeated freeze / thaw cycles.
存储溶液	pH: 7.2 Preservative: 0.02% Sodium azide
纯度	Affinity purified
克隆	多克隆
同种型	IgG

应用

The Abpromise guarantee

Abpromise™ 承诺保证使用ab7888于以下的经测试应用

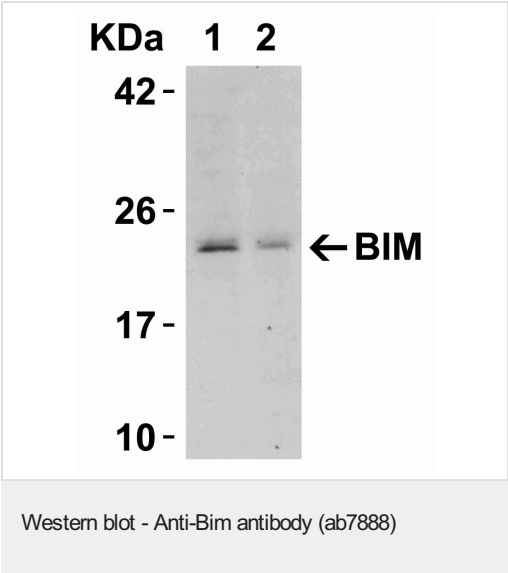
“应用说明”部分 下显示的仅为推荐的起始稀释度;实际最佳的稀释度/浓度应由使用者检定。

应用	Ab评论	说明
IHC-P		Use a concentration of 20 µg/ml.
WB		Use a concentration of 1 µg/ml. Predicted molecular weight: 23 kDa.
ICC/IF		Use at an assay dependent concentration.

靶标

功能	Induces apoptosis. Isoform BimL is more potent than isoform BimEL. Isoform Bim-alpha1, isoform Bim-alpha2 and isoform Bim-alpha3 induce apoptosis, although less potent than the isoforms BimEL, BimL and BimS. Isoform Bim-gamma induces apoptosis.
组织特异性	Isoform BimEL, isoform BimL and isoform BimS are the predominant isoforms and are ubiquitously expressed with a tissue-specific variation. Isoform Bim-gamma is most abundantly expressed in small intestine and colon, and in lower levels in spleen, prostate, testis, heart, liver and kidney.
序列相似性	Belongs to the Bcl-2 family.
结构域	The BH3 motif is required for Bcl-2 binding and cytotoxicity.
细胞定位	Mitochondrion and Endomembrane system. Associated with intracytoplasmic membranes.

图片



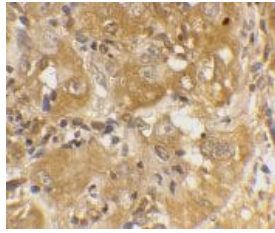
All lanes : Anti-Bim antibody (ab7888) at 0.5 µg/ml

Lane 1 : Human thymus tissue lysate
Lane 2 : Human colon tissue lysate

Lysates/proteins at 15 µg per lane.

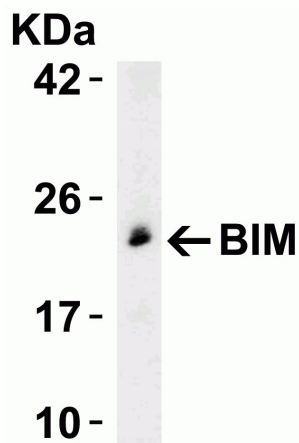
Secondary
All lanes : Goat anti-rabbit IgG HRP conjugate at 1/10000 dilution

Predicted band size: 23 kDa



Immunohistochemistry (Formalin/PFA-fixed paraffin-embedded sections) - Anti-Bim antibody (ab7888)

ab7888 at 20µg/ml staining Bim in human cancer cells by IHC-P



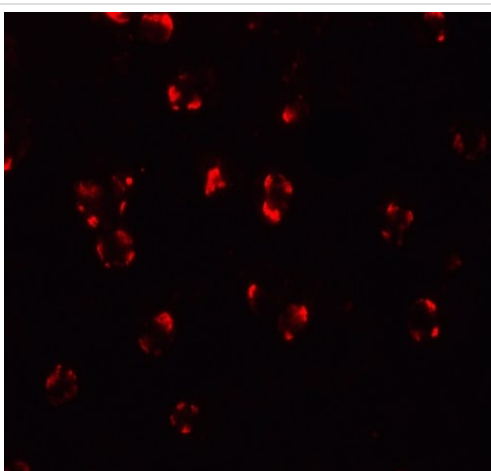
Western blot - Anti-Bim antibody (ab7888)

Anti-Bim antibody (ab7888) at 0.5 µg/ml + Rat Myeloma Cell lysate at 15 µg

Secondary

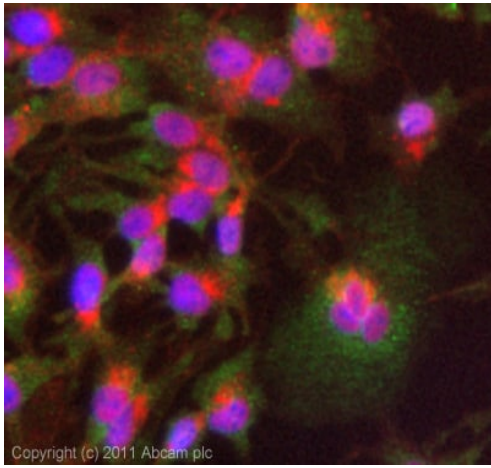
Goat anti-rabbit IgG HRP conjugate at 1/10000 dilution

Predicted band size: 23 kDa



Immunocytochemistry/ Immunofluorescence - Anti-Bim antibody (ab7888)

Immunocytochemistry/ Immunofluorescence analysis of 4% paraformaldehyde fixed human K562 cells labeling Bim with ab7888 at 20 µg/mL. Goat anti-rabbit IgG secondary antibody at 1/500 dilution was used as the secondary antibody.



Immunocytochemistry/ Immunofluorescence - Anti-Bim antibody (ab7888)

ICC/IF image of ab7888 stained HepG2 cells. The cells were 4% formaldehyde (10 min) and then incubated in 1%BSA / 10% normal goat serum / 0.3M glycine in 0.1% PBS-Tween for 1h to permeabilise the cells and block non-specific protein-protein interactions. The cells were then incubated with the antibody (ab7888, 5µg/ml) overnight at +4°C. The secondary antibody (green) was **ab96899** Dylight 488 goat anti-rabbit IgG (H+L) used at a 1/250 dilution for 1h. Alexa Fluor® 594 WGA was used to label plasma membranes (red) at a 1/200 dilution for 1h. DAPI was used to stain the cell nuclei (blue) at a concentration of 1.43µM.

Please note: All products are "FOR RESEARCH USE ONLY. NOT FOR USE IN DIAGNOSTIC PROCEDURES"

Our Abpromise to you: Quality guaranteed and expert technical support

- Replacement or refund for products not performing as stated on the datasheet
- Valid for 12 months from date of delivery
- Response to your inquiry within 24 hours
- We provide support in Chinese, English, French, German, Japanese and Spanish
- Extensive multi-media technical resources to help you
- We investigate all quality concerns to ensure our products perform to the highest standards

If the product does not perform as described on this datasheet, we will offer a refund or replacement. For full details of the Abpromise, please visit <https://www.abcam.cn/abpromise> or contact our technical team.

Terms and conditions

- Guarantee only valid for products bought direct from Abcam or one of our authorized distributors