


# Anti-beta Tubulin antibody [EP1331Y] - Microtubule Marker ab52901

 **RabMAb**

★★★★★ **12 Abreviews**   **40 References**   **5 图像**

## 概述

产品名称	Anti-beta Tubulin抗体[EP1331Y] - Microtubule Marker
描述	兔单克隆抗体[EP1331Y] to beta Tubulin - Microtubule Marker
宿主	Rabbit
经测试应用	<b>适用于:</b> WB, IHC-P
种属反应性	<b>与反应:</b> Mouse, Rat, Human <b>预测可用于:</b> Zebrafish 
免疫原	Synthetic peptide within Human beta Tubulin aa 400 to the C-terminus (C terminal). The exact sequence is proprietary. Database link: <b><u>P07437</u></b>
阳性对照	WB: PC12 and HeLa whole cell lysate ( <b>ab150035</b> ) and mouse brain, rat brain, mouse spinal cord and rat spinal cord tissue lysates. IHC-P: Human gastric carcinoma. ICC/IF: HeLa cells.
常规说明	This product is a recombinant monoclonal antibody, which offers several advantages including: <ul style="list-style-type: none"> <li>- High batch-to-batch consistency and reproducibility</li> <li>- Improved sensitivity and specificity</li> <li>- Long-term security of supply</li> <li>- Animal-free production</li> </ul> For more information <b><u>see here</u></b> . Our RabMAb <sup>®</sup> technology is a patented hybridoma-based technology for making rabbit monoclonal antibodies. For details on our patents, please refer to <b><u>RabMAb<sup>®</sup> patents</u></b> .

## 性能

形式	Liquid
存放说明	Shipped at 4°C. Store at -20°C. Stable for 12 months at -20°C.
存储溶液	pH: 7.20 Preservative: 0.01% Sodium azide Constituents: 49% PBS, 50% Glycerol (glycerin, glycerine), 0.05% BSA
纯度	Protein A purified

克隆	单克隆
克隆编号	EP1331Y
同种型	IgG

应用

The Abpromise guarantee

Abpromise™承诺保证使用ab52901于以下的经测试应用

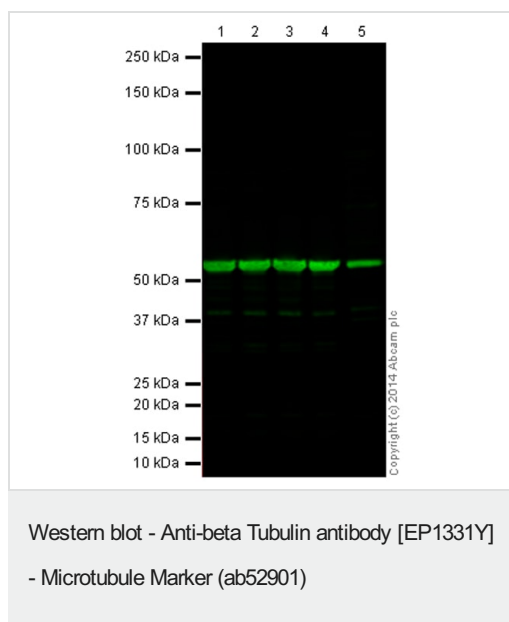
“应用说明”部分 下显示的仅为推荐的起始稀释度;实际最佳的稀释度/浓度应由使用者检定。

应用	Ab评论	说明
WB	★★★★★ (6)	1/20000. Detects a band of approximately 50 kDa (predicted molecular weight: 50 kDa).
IHC-P	★★★★★ (2)	Use at an assay dependent concentration. Perform heat mediated antigen retrieval with citrate buffer pH 6 before commencing with IHC staining protocol.

靶标

功能	Tubulin is the major constituent of microtubules. It binds two moles of GTP, one at an exchangeable site on the beta chain and one at a non-exchangeable site on the alpha chain.
组织特异性	Ubiquitously expressed with highest levels in spleen, thymus and immature brain.
疾病相关	Cortical dysplasia, complex, with other brain malformations 6 Skin creases, congenital symmetric circumferential, 1
序列相似性	Belongs to the tubulin family.
结构域	The highly acidic C-terminal region may bind cations such as calcium.
翻译后修饰	Some glutamate residues at the C-terminus are polyglutamylated, resulting in polyglutamate chains on the gamma-carboxyl group (PubMed:26875866). Polyglutamylation plays a key role in microtubule severing by spastin (SPAST). SPAST preferentially recognizes and acts on microtubules decorated with short polyglutamate tails: severing activity by SPAST increases as the number of glutamates per tubulin rises from one to eight, but decreases beyond this glutamylation threshold (PubMed:26875866). Some glutamate residues at the C-terminus are monoglycylated but not polyglycylated due to the absence of functional TTL10 in human. Monoglycylation is mainly limited to tubulin incorporated into axonemes (cilia and flagella). Both polyglutamylation and monoglycylation can coexist on the same protein on adjacent residues, and lowering glycylation levels increases polyglutamylation, and reciprocally. The precise function of monoglycylation is still unclear. Phosphorylated on Ser-172 by CDK1 during the cell cycle, from metaphase to telophase, but not in interphase. This phosphorylation inhibits tubulin incorporation into microtubules.
细胞定位	Cytoplasm, cytoskeleton.

图片



**All lanes** : Anti-beta Tubulin antibody [EP1331Y] - Microtubule Marker (ab52901) at 1/20000 dilution

**Lane 1** : Brain (Mouse) Tissue Lysate

**Lane 2** : Brain (Rat) Tissue Lysate

**Lane 3** : Spinal Cord (Mouse) Tissue Lysate

**Lane 4** : Spinal Cord (Rat) Tissue Lysate

**Lane 5** : PC12 (Rat adrenal pheochromocytoma cell line) Whole Cell Lysate

Lysates/proteins at 20 µg per lane.

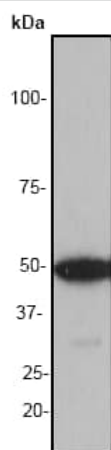
### Secondary

**All lanes** : Goat Anti-Rabbit IgG H&L (Alexa Fluor® 790) (**ab175781**) at 1/10000 dilution

**Predicted band size:** 50 kDa

**Observed band size:** 52 kDa

This blot was produced using a 4-12% Bis-tris gel under the MOPS buffer system. The gel was run at 200V for 50 minutes before being transferred onto a Nitrocellulose membrane at 30V for 70 minutes. The membrane was then blocked for an hour using Licor blocking buffer before being incubated with ab52901 overnight at 4°C. Antibody binding was detected using **ab175781** at a 1:10,000 dilution for 1hr at room temperature and then imaged using the Licor Odyssey CLx.



Western blot - Anti-beta Tubulin antibody [EP1331Y]  
- Microtubule Marker (ab52901)

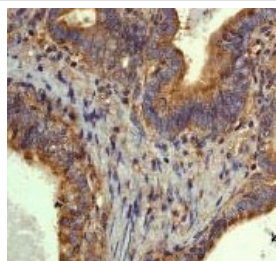
Anti-beta Tubulin antibody [EP1331Y] - Microtubule Marker  
(ab52901) at 1/20000 dilution + HeLa cell lysate at 10 µg

### Secondary

Goat anti-rabbit HRP-conjugated at 1/2000 dilution

**Predicted band size:** 50 kDa

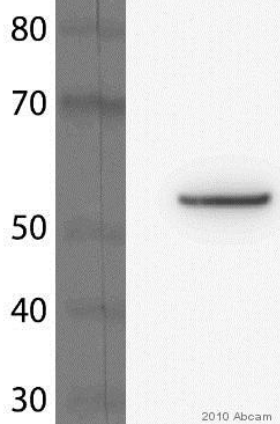
**Observed band size:** 50 kDa



Immunohistochemistry (Formalin/PFA-fixed paraffin-  
embedded sections) - Anti-beta Tubulin antibody  
[EP1331Y] - Microtubule Marker (ab52901)

ab52901 at 1/250 dilution staining beta Tubulin in human gastric  
carcinoma by Immunohistochemistry, Paraffin embedded tissue.

Perform heat mediated antigen retrieval with citrate buffer pH 6  
before commencing with IHC staining protocol.



Western blot - Anti-beta Tubulin antibody [EP1331Y]  
- Microtubule Marker (ab52901)

This image is courtesy of an anonymous Abreview

Anti-beta Tubulin antibody [EP1331Y] - Microtubule Marker  
(ab52901) at 1/1000 dilution (in PBS +0.5% Tween20 for 2 hours at  
23°C) + 293 human embryonic kidney whole cell lysate at 25 µg

### Secondary

An HRP-conjugated Goat anti-rabbit IgG polyclonal at 1/10000  
dilution

Developed using the ECL technique.

Performed under reducing conditions.





**Predicted band size:** 50 kDa

**Observed band size:** 55 kDa

**Exposure time:** 45 seconds

**Blocking Step:** 5% Milk for 1 hour at 23°C

Why choose a recombinant antibody?

 <p><b>Research with confidence</b> Consistent and reproducible results</p>	 <p><b>Long-term and scalable supply</b> Recombinant technology</p>
 <p><b>Success from the first experiment</b> Confirmed specificity</p>	 <p><b>Ethical standards compliant</b> Animal-free production</p>

Anti-beta Tubulin antibody [EP1331Y] - Microtubule Marker (ab52901)

**Please note:** All products are "FOR RESEARCH USE ONLY. NOT FOR USE IN DIAGNOSTIC PROCEDURES"

#### Our Abpromise to you: Quality guaranteed and expert technical support

---

- Replacement or refund for products not performing as stated on the datasheet
- Valid for 12 months from date of delivery
- Response to your inquiry within 24 hours
- We provide support in Chinese, English, French, German, Japanese and Spanish
- Extensive multi-media technical resources to help you
- We investigate all quality concerns to ensure our products perform to the highest standards

If the product does not perform as described on this datasheet, we will offer a refund or replacement. For full details of the Abpromise, please visit <https://www.abcam.cn/abpromise> or contact our technical team.

#### Terms and conditions

---

- Guarantee only valid for products bought direct from Abcam or one of our authorized distributors