

Anti-beta Galactosidase antibody ab616

★★★★★ [30 Abreviews](#) [116 References](#) [1 图像](#)

概述

产品名称	Anti-beta Galactosidase抗体
描述	兔多克隆抗体to beta Galactosidase
宿主	Rabbit
经测试应用	适用于: WB 不适用于: ICC/IF,IHC-Fr or IHC-P
种属反应性	与反应: Escherichia coli
免疫原	Full length native protein (purified) corresponding to beta Galactosidase. Full length native Beta Galactosidase isolated from E.coli
常规说明	<p>Application Note: This antibody shows inconsistent results between batches in ICC/IF, IF, IHC-P, IHC-Fr and IHC-FoFr. We have received several good Abreviews on these applications, however, we are unable to guarantee positive results. If the antibody is used for IHC, please try fixing with methanol and block with gelatine instead with BSA or NGS. After each antibody incubation, please wash 5x with TBS instead of PBS.We would recommend ab4761 or ab12081 as alternatives.</p> <p>The Life Science industry has been in the grips of a reproducibility crisis for a number of years. Abcam is leading the way in addressing this with our range of recombinant monoclonal antibodies and knockout edited cell lines for gold-standard validation. Please check that this product meets your needs before purchasing.</p> <p>If you have any questions, special requirements or concerns, please send us an inquiry and/or contact our Support team ahead of purchase. Recommended alternatives for this product can be found below, along with publications, customer reviews and Q&As</p>

性能

形式	Liquid
存放说明	Shipped at 4°C. Store at +4°C short term (1-2 weeks). Upon delivery aliquot. Store at -20°C or -80°C. Avoid freeze / thaw cycle.
存储溶液	Preservative: 0.01% Sodium azide Constituents: 0.42% Potassium phosphate, 0.87% Sodium chloride, 1% BSA
纯度	IgG fraction
纯化说明	IgG fraction purified from monospecific antiserum by a multi-step process of delipidation, salt

fractionation, ion exchange chromatography and dialysis.

克隆
同种型

多克隆
IgG

应用

The Abpromise guarantee **Abpromise™**承诺保证使用ab616于以下的经测试应用

“应用说明”部分 下显示的仅为推荐的起始稀释度;实际最佳的稀释度/浓度应由使用者检定。

应用	Ab评论	说明
WB	★★★★★ (8)	1/5000 - 1/10000. Detects a band of approximately 116 kDa. This antibody shows inconsistent results between batches in ICC/IF, IHC-P, IHC-Fr and IHC-FoFr. We have received several good Abreviews on these applications, however, we are unable to guarantee positive results. If the antibody is used for IHC, please try fixing with methanol and block with gelatine instead with BSA or NGS. After each antibody incubation, please wash

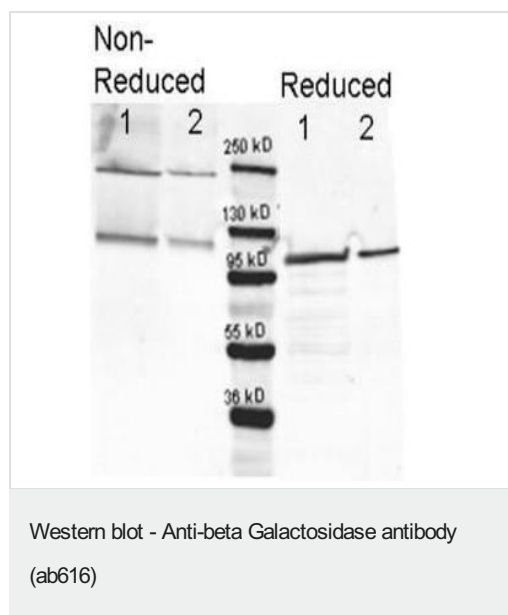
应用说明 Is unsuitable for ICC/IF, IHC-Fr or IHC-P.

靶标

相关性 Beta galactosidase is coded by a gene (lac z) in the lac operon of Escherichia coli. It is a metalloenzyme that splits lactose into glucose and galactose. It hydrolyzes terminal, non-reducing beta-D-galactose residues in beta-D-galactosides. Activation by cations seems to be substrate dependent. K⁺, Na⁺, NH₄⁺, Rb⁺, Cs⁺ and Mn⁺⁺ all activate enzyme activity based upon the substrate used.

细胞定位 Cytoplasmic

图片



All lanes : Anti-beta Galactosidase antibody (ab616)

Lanes 1-2 : Non-reduced purified recombinant beta Galactosidase protein

Lanes 3-4 : reduced purified recombinant beta Galactosidase protein

Western blotting using ab616. Lane 1 shows 80 ng and lane 2 shows 20 ng loaded onto gel. Results for non-reducing conditions of SDS-PAGE prior to transfer to nitrocellulose are shown on the left side of the figure; results obtained under reducing conditions are shown on the right. The membrane was probed with ab616 at 1/10,000 dilution.

Please note: All products are "FOR RESEARCH USE ONLY. NOT FOR USE IN DIAGNOSTIC PROCEDURES"

Our Abpromise to you: Quality guaranteed and expert technical support

- Replacement or refund for products not performing as stated on the datasheet
- Valid for 12 months from date of delivery
- Response to your inquiry within 24 hours
- We provide support in Chinese, English, French, German, Japanese and Spanish
- Extensive multi-media technical resources to help you
- We investigate all quality concerns to ensure our products perform to the highest standards

If the product does not perform as described on this datasheet, we will offer a refund or replacement. For full details of the Abpromise, please visit <https://www.abcam.cn/abpromise> or contact our technical team.

Terms and conditions

- Guarantee only valid for products bought direct from Abcam or one of our authorized distributors