

Anti-beta 2 Microglobulin antibody [B2M-01] ab759

[1 Abreviews](#) [11 References](#) [3 图像](#)

概述

产品名称	Anti-beta 2 Microglobulin抗体[B2M-01]
描述	小鼠单克隆抗体[B2M-01] to beta 2 Microglobulin
宿主	Mouse
特异性	This antibody reacts with beta-2-microglobulin, associated with cell-surface MHC Class I molecules and other membrane antigens as well as with soluble forms of beta-2-microglobulin. The antibody detected beta-2-microglobulin in U-937 and RAJI cell lines in WB in non reducing conditions however failed to detect a band in JEG-3 and A431 cell lysates. All lysates gave a signal in direct ELISA.
经测试应用	适用于: WB, Flow Cyt
种属反应性	与反应: Human 不与反应: Mouse, Rabbit, Chicken, Cow, Dog, Pig
免疫原	Full length native protein (purified) (Human).
阳性对照	U-937 and RAJI cell lysates
常规说明	<p>The Life Science industry has been in the grips of a reproducibility crisis for a number of years. Abcam is leading the way in addressing this with our range of recombinant monoclonal antibodies and knockout edited cell lines for gold-standard validation. Please check that this product meets your needs before purchasing.</p> <p>If you have any questions, special requirements or concerns, please send us an inquiry and/or contact our Support team ahead of purchase. Recommended alternatives for this product can be found below, along with publications, customer reviews and Q&As</p>

性能

形式	Liquid
存放说明	Shipped at 4°C. Store at +4°C short term (1-2 weeks). Upon delivery aliquot. Store at -20°C or -80°C. Avoid freeze / thaw cycle.
存储溶液	pH: 7.40 Preservative: 0.097% Sodium azide Constituent: PBS
纯度	Proprietary Purification
纯化说明	Purified by precipitation methods. Purity >95% by SDS-PAGE.

克隆	单克隆
克隆编号	B2M-01
同种型	IgG2a

应用

The Abpromise guarantee **Abpromise™**承诺保证使用ab759于以下的经测试应用

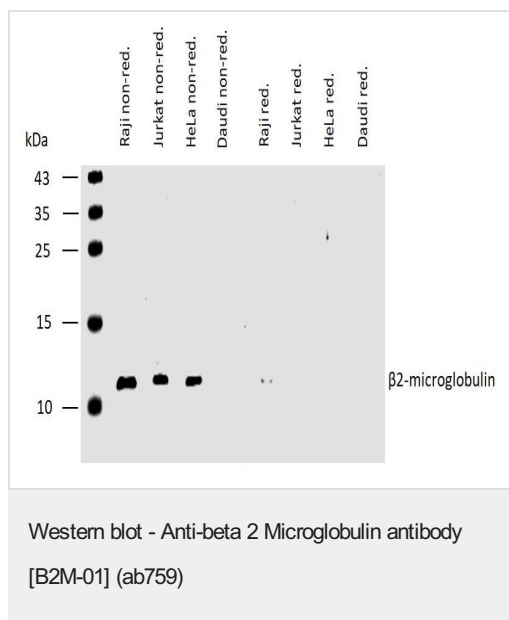
“应用说明”部分 下显示的仅为推荐的起始稀释度;实际最佳的稀释度/浓度应由使用者检定。

应用	Ab评论	说明
WB		Use a concentration of 2 µg/ml. Use under non reducing condition. Detects a band of approximately 13 kDa (predicted molecular weight: 13 kDa). Use under non reducing conditions. Incubate overnight. Block with 5% milk for 2hrs.
Flow Cyt		Use a concentration of 0.5 - 4 µg/ml.

靶标

功能	Component of the class I major histocompatibility complex (MHC). Involved in the presentation of peptide antigens to the immune system.
疾病相关	Defects in B2M are the cause of hypercatabolic hypoproteinemia (HYCATHYP) [MIM:241600]. Affected individuals show marked reduction in serum concentrations of immunoglobulin and albumin, probably due to rapid degradation. Note=Beta-2-microglobulin may adopt the fibrillar configuration of amyloid in certain pathologic states. The capacity to assemble into amyloid fibrils is concentration dependent. Persistently high beta(2)-microglobulin serum levels lead to amyloidosis in patients on long-term hemodialysis.
序列相似性	Belongs to the beta-2-microglobulin family. Contains 1 Ig-like C1-type (immunoglobulin-like) domain.
翻译后修饰	Glycation of Ile-21 is observed in long-term hemodialysis patients.
细胞定位	Secreted. Detected in serum and urine.

图片



All lanes : Anti-beta 2 Microglobulin antibody [B2M-01] (ab759) at 2 μ g/ml

Lane 1 : Raji cell lysate under non-reducing condition

Lane 2 : Jurkat cell lysate under non-reducing condition

Lane 3 : HeLa cell lysate under non-reducing condition

Lane 4 : Daudi cell lysate under non-reducing condition

Lane 5 : Raji cell lysate under reducing condition

Lane 6 : Jurkat cell lysate under reducing condition

Lane 7 : HeLa cell lysate under reducing condition

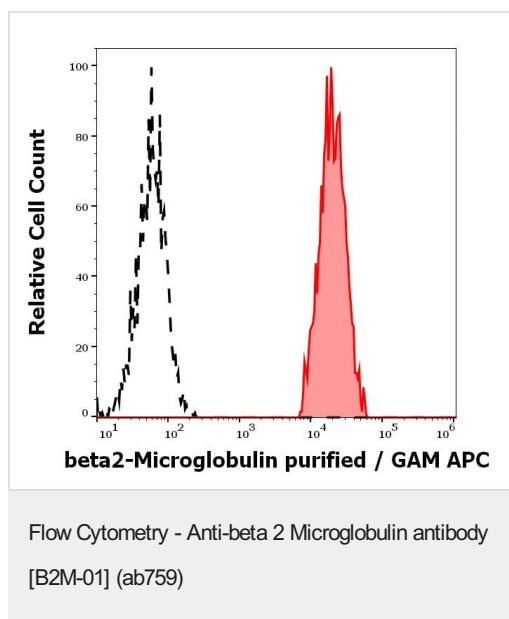
Lane 8 : Daudi cell lysate under reducing condition

Secondary

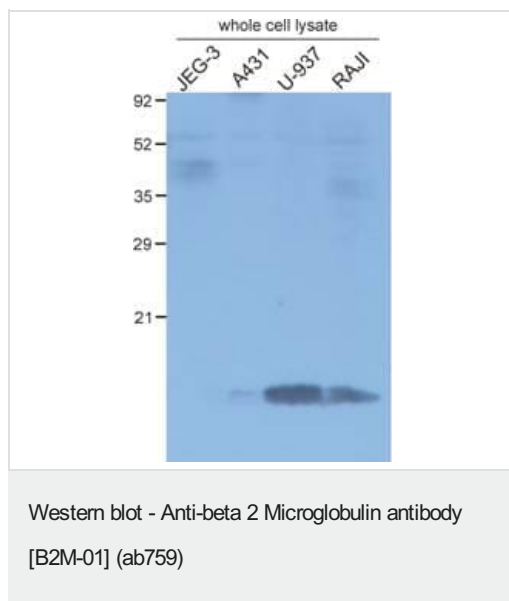
All lanes : IRDye800-conjugated anti-mouse secondary antibody

Predicted band size: 13 kDa

Observed band size: 12 kDa



Flow cytometric analysis of Human Peripheral Blood cells labelling beta 2 Microglobulin with ab759 at 0.3 μ g/ml showing separation of human monocytes (red-filled) from human beta2-Microglobulin negative blood debris (black-dashed).



All lanes : Anti-beta 2 Microglobulin antibody [B2M-01] (ab759) at 2 µg/ml

Lane 1 : JEG-3 cell lysate

Lane 2 : A-431 cell lysate

Lane 3 : U-937 cell lysate

Lane 4 : Raji cell lysate

Developed using the ECL technique.

Performed under non-reducing conditions.

Predicted band size: 13 kDa

Lysates were separated on 15% SDS–PAGE gel and electrotransferred to a PVDF membrane. The membrane was blocked in PBS/Tween buffer containing 5% non fat dry milk for 2 hours and probed with ab759 at 4°C overnight.

Please note: All products are "FOR RESEARCH USE ONLY. NOT FOR USE IN DIAGNOSTIC PROCEDURES"

Our Abpromise to you: Quality guaranteed and expert technical support

- Replacement or refund for products not performing as stated on the datasheet
- Valid for 12 months from date of delivery
- Response to your inquiry within 24 hours
- We provide support in Chinese, English, French, German, Japanese and Spanish
- Extensive multi-media technical resources to help you
- We investigate all quality concerns to ensure our products perform to the highest standards

If the product does not perform as described on this datasheet, we will offer a refund or replacement. For full details of the Abpromise, please visit <https://www.abcam.cn/abpromise> or contact our technical team.

Terms and conditions

- Guarantee only valid for products bought direct from Abcam or one of our authorized distributors