

### Anti-Beclin 1 antibody ab62557

★★★★★ [7 Abreviews](#) [266 References](#) [9 图像](#)

#### 概述

产品名称	Anti-Beclin 1抗体
描述	兔多克隆抗体to Beclin 1
宿主	Rabbit
经测试应用	适用于: IHC-P, WB, ICC/IF
种属反应性	与反应: Mouse, Rat, Human
免疫原	Synthetic peptide corresponding to Human Beclin 1 (N terminal). ab62557 was raised against a 17 amino acid synthetic peptide from near the amino terminus of human Beclin-1. The immunogen is located within amino acids 40 - 90 of Beclin-1. Database link: <a href="#">Q14457</a>
阳性对照	WB: HEK-293, A549, HeLa, HepG2, K562, MCF7 and SK-N-SH cell lines. Mouse heart, brain and colon tissue. Rat liver, lung, brain and colon tissue. IHC-P: Human brain tissue, mouse kidney and rat liver and spleen tissues. IF: Mouse brain. ICC/IF: HeLa cells.
常规说明	For Western blot protocol see the applications section.  For information on sample preparation for western blot, please refer <a href="#">here</a> .  The Life Science industry has been in the grips of a reproducibility crisis for a number of years. Abcam is leading the way in addressing this with our range of recombinant monoclonal antibodies and knockout edited cell lines for gold-standard validation. Please check that this product meets your needs before purchasing.  If you have any questions, special requirements or concerns, please send us an inquiry and/or contact our Support team ahead of purchase. Recommended alternatives for this product can be found below, along with publications, customer reviews and Q&As

#### 性能

形式	Liquid
存放说明	Shipped at 4°C. Store at +4°C.
存储溶液	pH: 7.2 Preservative: 0.02% Sodium azide Constituent: PBS
纯度	Immunogen affinity purified
克隆	多克隆

应用

**The Abpromise guarantee**      **Abpromise™**承诺保证使用ab62557于以下的经测试应用

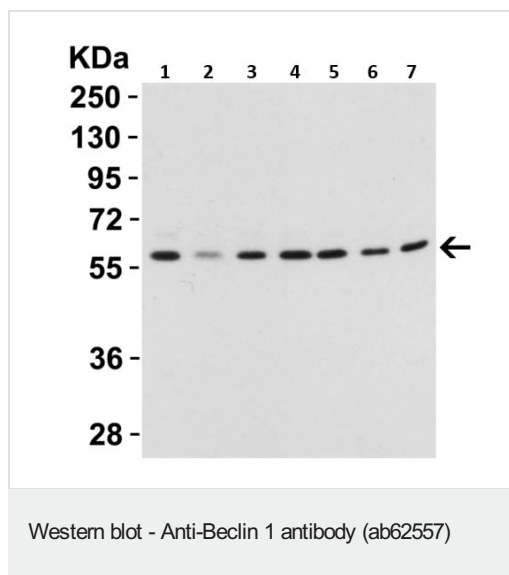
“应用说明”部分 下显示的仅为推荐的起始稀释度;实际最佳的稀释度/浓度应由使用者检定。

应用	Ab评论	说明
IHC-P	★★★★★ (2)	Use a concentration of 2 µg/ml.
WB	★★★★★ (4)	Use a concentration of 0.5 - 2 µg/ml. Detects a band of approximately 52 kDa (predicted molecular weight: 52 kDa). After transfer, wash membrane in TBST. Incubate membrane with 5% non-fat dry milk in TBS, 4C, overnight..  Dilute ab62557 to recommended dilution in 10mL of blocking buffer. Incubate membrane with ab62557 for 1 h at room temperature. Wash 3 times x 10 min in washing buffer with gentle
IF		Use a concentration of 20 µg/ml.
ICC/IF	★★★★★ (1)	1/100.

靶标

功能	Plays a central role in autophagy (By similarity). May play a role in antiviral host defense. Protects against infection by a neurovirulent strain of Sindbis virus.
组织特异性	Ubiquitous.
序列相似性	Belongs to the beclin family.
细胞定位	Golgi apparatus > trans-Golgi network membrane. Interaction with ATG14 promotes translocation to autophagosomes. Expressed in dendrites and cell bodies of cerebellar Purkinje cells.

图片



**All lanes :** Anti-Beclin 1 antibody (ab62557) at 1 µg/ml

**Lane 1 :** 293 human cell line

**Lane 2 :** A549 human cell line

**Lane 3 :** HeLa cell line

**Lane 4 :** HepG2 cell line

**Lane 5 :** K562 cell line

**Lane 6 :** MCF7 cell line

**Lane 7 :** SK-N-SH cell line

Lysates/proteins at 15 µg per lane.

### Secondary

**All lanes :** Rabbit IgG antibody (HRP) at 1/1000 dilution

**Predicted band size:** 52 kDa

Gel: 10%

Running condition: 130V, 1.5hrs

Transfer condition: Wet, 250mA, 2 hrs (NC membrane)

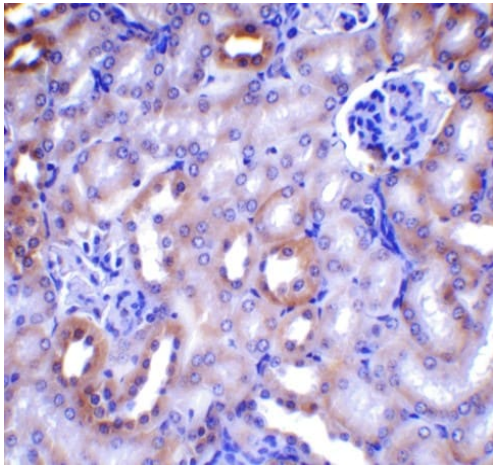
Blocking condition: 5% non-fat milk in TBS at 4 overnight

Primary antibody incubation: RT, 1hr

Secondary antibody incubation: RT, 1hr

Washing condition: 5 ml TBST, 4 x 5min

Exposure system: GE ECL 10 sec

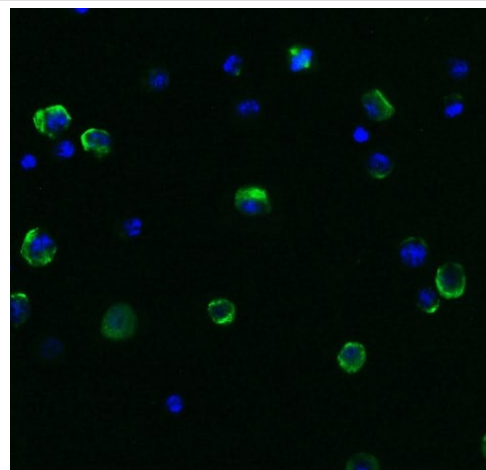


Immunohistochemistry (Formalin/PFA-fixed paraffin-embedded sections) - Anti-Beclin 1 antibody (ab62557)

Immunohistochemistry (Formalin/PFA-fixed paraffin-embedded sections) analysis of mouse kidney tissue labelling Beclin 1 with **ab6257** at 1 µg/mL. Heat mediated antigen retrieval was performed using citrate buffer, pH 6.0, microwave, for 20min. Streptavidin-HRP Kit (Rabbit IgG) was used as the secondary antibody.

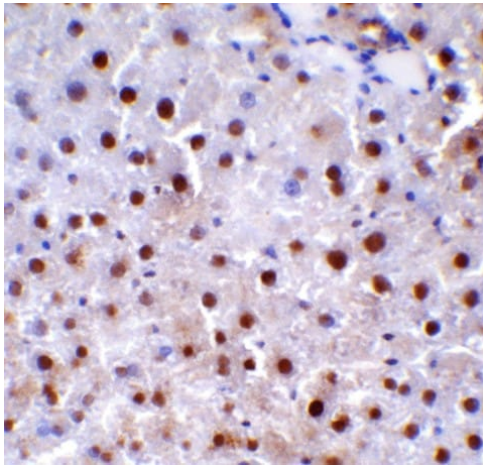
blocking condition: 5% BSA at Room Temperature for 1 hour

Chromagen system: DAB



Immunocytochemistry/ Immunofluorescence - Anti-Beclin 1 antibody (ab62557)

Immunofluorescence analysis of HeLa cells labelling Beclin 1 with ab62557 at 1/100 dilution. Cells were fixed with 4% paraformaldehyde at room temperature for 15 minutes and was permeabilized with 0.1% Triton X-100 at room temperature for 4 minutes. Rabbit IgG antibody (Alexa Fluor 488) at 1/2000 was used as the secondary antibody (green). Nuclear DNA was labelled with DAPI (blue).

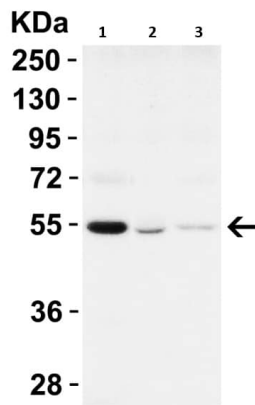


Immunohistochemistry (Formalin/PFA-fixed paraffin-embedded sections) - Anti-Beclin 1 antibody (ab62557)

Immunohistochemistry (Formalin/PFA-fixed paraffin-embedded sections) analysis of rat liver tissue labelling Beclin 1 with **ab6257** at 1 µg/mL. Heat mediated antigen retrieval was performed using citrate buffer, pH 6.0, microwave, for 20min. Streptavidin-HRP Kit (Rabbit IgG) was used as the secondary antibody.

blocking condition: 5% BSA at Room Temperature for 1 hour

Chromagen system: DAB



Western blot - Anti-Beclin 1 antibody (ab62557)

**All lanes :** Anti-Beclin 1 antibody (ab62557) at 1 µg/ml

**Lane 1 :** Mouse heart tissue

**Lane 2 :** Mouse brain tissue

**Lane 3 :** Mouse colon tissue

Lysates/proteins at 15 µg per lane.

#### Secondary

**All lanes :** Rabbit IgG antibody (HRP) at 1/10000 dilution

**Predicted band size:** 52 kDa

Gel: 10%

Running condition: 130V, 1.5hrs

Transfer condition: Wet, 250mA, 2 hrs (NC membrane)

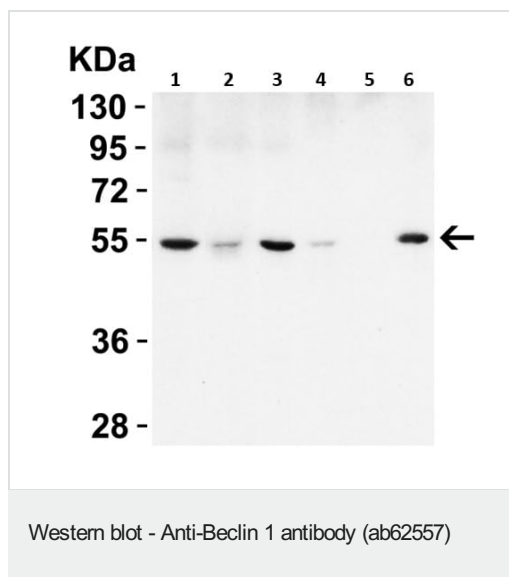
Blocking condition: 5% non-fat milk in TBS at 4 overnight

Primary antibody incubation: RT, 1hr

Secondary antibody incubation: RT, 1hr

Washing condition: 5 ml TBST, 4 x 5min

Exposure system: GE ECL 10 sec



**All lanes :** Anti-Beclin 1 antibody (ab62557) at 1  $\mu$ g

**Lane 1 :** Rat liver tissue

**Lane 2 :** Rat heart tissue

**Lane 3 :** Rat lung tissue

**Lane 4 :** Rat brain tissue

**Lane 5 :** Rat ovary tissue

**Lane 6 :** Rat colon tissue

Lysates/proteins at 15  $\mu$ g per lane.

### Secondary

**All lanes :** Rabbit IgG antibody (HRP) at 1/10000 dilution

**Predicted band size:** 52 kDa

Gel: 10%

Running condition: 130V, 1.5hrs

Transfer condition: Wet, 250mA, 2 hrs (NC membrane)

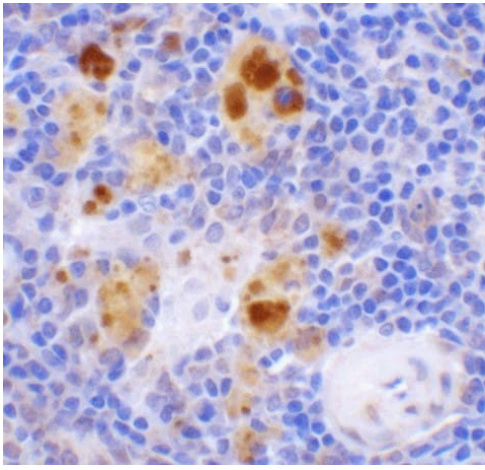
Blocking condition: 5% non-fat milk in TBS at 4 overnight

Primary antibody incubation: RT, 1hr

Secondary antibody incubation: RT, 1hr

Washing condition: 5 ml TBST, 4 x 5min

Exposure system: GE ECL 10 sec

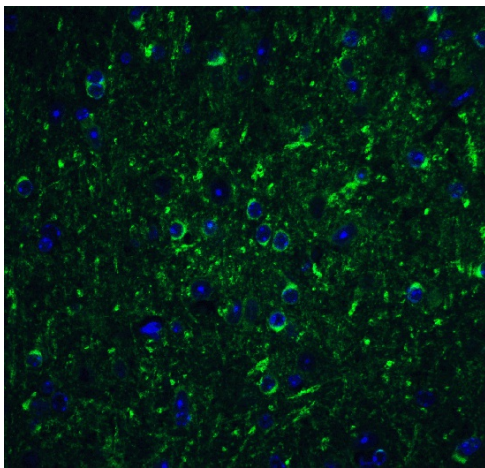


Immunohistochemistry (Formalin/PFA-fixed paraffin-embedded sections) - Anti-Beclin 1 antibody (ab62557)

Immunohistochemistry (Formalin/PFA-fixed paraffin-embedded sections) analysis of rat spleen tissue labelling Beclin 1 with **ab6257** at 1 µg/mL. Heat mediated antigen retrieval was performed using citrate buffer, pH 6.0, microwave, for 20min. Streptavidin-HRP Kit (Rabbit IgG) was used as the secondary antibody.

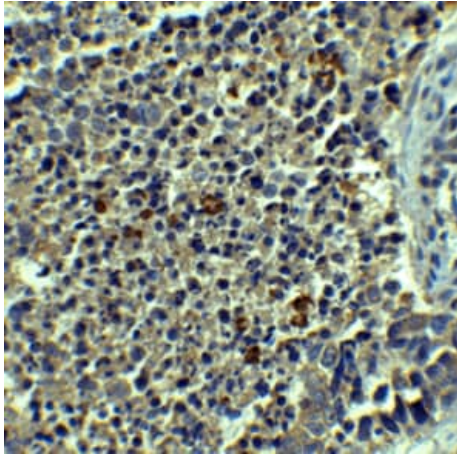
blocking condition: 5% BSA at Room Temperature for 1 hour

Chromagen system: DAB



Immunofluorescence - Anti-Beclin 1 antibody (ab62557)

ab62557 at 20 µg/mL staining Beclin 1 (green) in mouse brain tissue by Immunofluorescence. DAPI staining in blue.



Paraffin-embedded human brain tissue stained for Beclin 1 using ab62557 at 2.5 µg/ml in immunohistochemical analysis.

Immunohistochemistry (Formalin/PFA-fixed paraffin-embedded sections) - Anti-Beclin 1 antibody (ab62557)

**Please note:** All products are "FOR RESEARCH USE ONLY. NOT FOR USE IN DIAGNOSTIC PROCEDURES"

#### Our Abpromise to you: Quality guaranteed and expert technical support

---

- Replacement or refund for products not performing as stated on the datasheet
- Valid for 12 months from date of delivery
- Response to your inquiry within 24 hours
- We provide support in Chinese, English, French, German, Japanese and Spanish
- Extensive multi-media technical resources to help you
- We investigate all quality concerns to ensure our products perform to the highest standards

If the product does not perform as described on this datasheet, we will offer a refund or replacement. For full details of the Abpromise, please visit <https://www.abcam.cn/abpromise> or contact our technical team.

#### Terms and conditions

---

- Guarantee only valid for products bought direct from Abcam or one of our authorized distributors