

### Anti-Beclin 1 antibody [2A4] ab114071

★★★★★ [5 Abreviews](#) [28 References](#) [3 图像](#)

#### 概述

产品名称	Anti-Beclin 1抗体[2A4]
描述	小鼠单克隆抗体[2A4] to Beclin 1
宿主	Mouse
经测试应用	适用于: WB, IHC-P, Flow Cyt
种属反应性	与反应: Human
免疫原	Recombinant fragment corresponding to Human Beclin 1 aa 51-248. Database link: <a href="#">Q14457</a>
阳性对照	WB: HeLa; A431; MCF7; RAJ; Jurkat and SKBR3 cell lysates IHC-P: Breast cancer and liver cancer tissues
常规说明	<p>The Life Science industry has been in the grips of a reproducibility crisis for a number of years. Abcam is leading the way in addressing this with our range of recombinant monoclonal antibodies and knockout edited cell lines for gold-standard validation. Please check that this product meets your needs before purchasing.</p> <p>If you have any questions, special requirements or concerns, please send us an inquiry and/or contact our Support team ahead of purchase. Recommended alternatives for this product can be found below, along with publications, customer reviews and Q&amp;As</p>

#### 性能

形式	Liquid
存放说明	Shipped at 4°C. Upon delivery aliquot and store at -20°C. Avoid repeated freeze / thaw cycles.
存储溶液	Preservative: 0.05% Sodium azide Constituent: PBS
纯度	Protein G purified
纯化说明	Purified from tissue culture supernatant.
克隆	单克隆
克隆编号	2A4
同种型	IgG1

## The Abpromise guarantee

Abpromise™承诺保证使用ab114071于以下的经测试应用

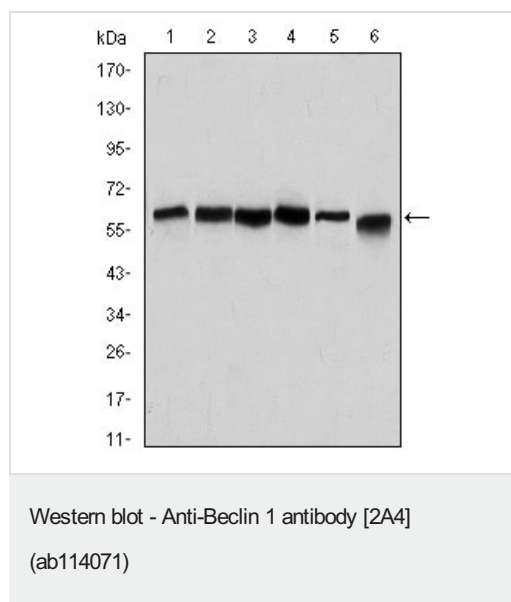
“应用说明”部分 下显示的仅为推荐的起始稀释度;实际最佳的稀释度/浓度应由使用者检定。

应用	Ab评论	说明
WB	★★★★☆ (2)	1/500 - 1/2000. Predicted molecular weight: 60 kDa.
IHC-P		1/200 - 1/1000.
Flow Cyt		1/200 - 1/400. <b>ab170190</b> - Mouse monoclonal IgG1, is suitable for use as an isotype control with this antibody.

## 靶标

功能	Plays a central role in autophagy (By similarity). May play a role in antiviral host defense. Protects against infection by a neurovirulent strain of Sindbis virus.
组织特异性	Ubiquitous.
序列相似性	Belongs to the beclin family.
细胞定位	Golgi apparatus > trans-Golgi network membrane. Interaction with ATG14 promotes translocation to autophagosomes. Expressed in dendrites and cell bodies of cerebellar Purkinje cells.

## 图片



**All lanes** : Anti-Beclin 1 antibody [2A4] (ab114071) at 1/500 dilution

**Lane 1** : HeLa cell lysate

**Lane 2** : A431 cell lysate

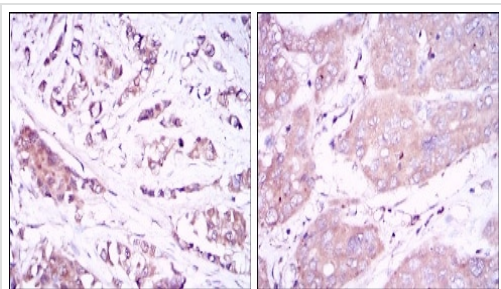
**Lane 3** : MCF7 cell lysate

**Lane 4** : Raji cell lysate

**Lane 5** : Jurkat cell lysate

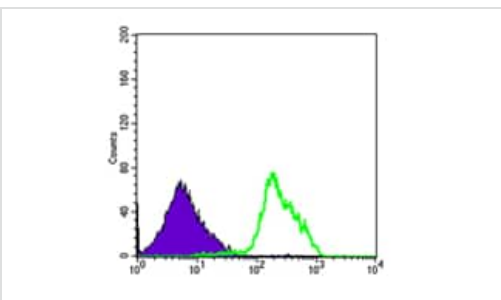
**Lane 6** : SKBR3 cell lysate

**Predicted band size:** 60 kDa



Immunohistochemical analysis of Beclin 1 expression in paraffin embedded breast cancer tissues (left) and liver cancer tissues (right) using ab114071 at 1/200 dilution with DAB staining

Immunohistochemistry (Formalin/PFA-fixed paraffin-embedded sections) - Anti-Beclin 1 antibody [2A4] (ab114071)



Flow cytometric analysis of RAJI cells using Beclin 1 mouse mAb (green) and negative control (purple).

Flow Cytometry - Anti-Beclin 1 antibody [2A4] (ab114071)

**Please note:** All products are "FOR RESEARCH USE ONLY. NOT FOR USE IN DIAGNOSTIC PROCEDURES"

### Our Abpromise to you: Quality guaranteed and expert technical support

---

- Replacement or refund for products not performing as stated on the datasheet
- Valid for 12 months from date of delivery
- Response to your inquiry within 24 hours
- We provide support in Chinese, English, French, German, Japanese and Spanish
- Extensive multi-media technical resources to help you
- We investigate all quality concerns to ensure our products perform to the highest standards

If the product does not perform as described on this datasheet, we will offer a refund or replacement. For full details of the Abpromise, please visit <https://www.abcam.cn/abpromise> or contact our technical team.

### Terms and conditions

---

- Guarantee only valid for products bought direct from Abcam or one of our authorized distributors