

Anti-BCMA antibody [EPR22457-260] ab253242

重组 RabMAb

2 References **6 图像**

概述

产品名称	Anti-BCMA抗体[EPR22457-260]
描述	兔单克隆抗体[EPR22457-260] to BCMA
宿主	Rabbit
经测试应用	适用于: Flow Cyt, IP, ICC/IF, WB 不适用于: IHC-P
种属反应性	与反应: Human
免疫原	Recombinant fragment. This information is proprietary to Abcam and/or its suppliers.
阳性对照	WB: Recombinant his-tagged human BCMA protein (ab219697 , aa1-54) ; U266B1 whole cell lysate. IP: U266B1 whole cell lysate. ICC/IF: U266B1 cells. Flow cyt: U266B1 cells.
常规说明	This product is a recombinant monoclonal antibody, which offers several advantages including: <ul style="list-style-type: none"> - High batch-to-batch consistency and reproducibility - Improved sensitivity and specificity - Long-term security of supply - Animal-free production For more information see here . Our RabMAb [®] technology is a patented hybridoma-based technology for making rabbit monoclonal antibodies. For details on our patents, please refer to RabMAb[®] patents .

性能

形式	Liquid
存放说明	Shipped at 4°C. Store at +4°C short term (1-2 weeks). Upon delivery aliquot. Store at -20°C long term. Avoid freeze / thaw cycle.
存储溶液	pH: 7.2 Preservative: 0.01% Sodium azide Constituents: PBS, 0.05% BSA, 40% Glycerol (glycerin, glycerine)
纯度	Protein A purified
克隆	单克隆
克隆编号	EPR22457-260

应用

The Abpromise guarantee

Abpromise™承诺保证使用ab253242于以下的经测试应用

“应用说明”部分下显示的仅为推荐的起始稀释度;实际最佳的稀释度/浓度应由使用者检定。

应用	Ab评论	说明
Flow Cyt		1/60.
IP		1/30.
ICC/IF		1/50.
WB		1/1000. Detects a band of approximately 23, 19 kDa (predicted molecular weight: 20, 14 kDa).

应用说明

Is unsuitable for IHC-P.

靶标

功能

Receptor for TNFSF13B/BLyS/BAFF and TNFSF13/APRIL. Promotes B-cell survival and plays a role in the regulation of humoral immunity. Activates NF-kappa-B and JNK.

组织特异性

Expressed in mature B-cells, but not in T-cells or monocytes.

疾病相关

Note=A chromosomal aberration involving TNFRSF17 is found in a form of T-cell acute lymphoblastic leukemia (T-ALL). Translocation t(4;16)(q26;p13) with IL2.

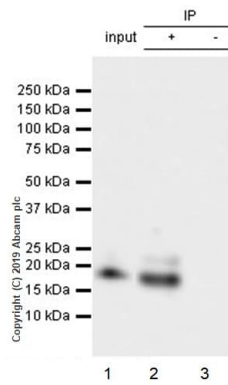
序列相似性

Contains 1 TNFR-Cys repeat.

细胞定位

Cell membrane. Endomembrane system. Perinuclear Golgi-like structures.

图片



Immunoprecipitation - Anti-BCMA antibody
[EPR22457-260] (ab253242)

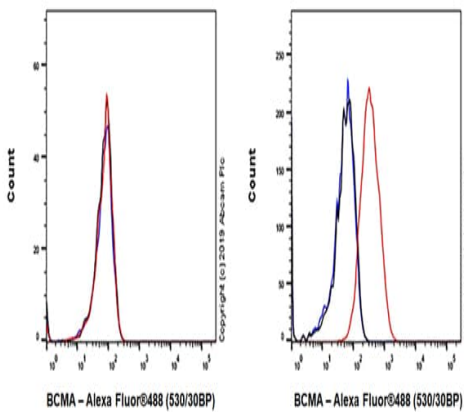
BCMA was immunoprecipitated from 0.35 mg of U266B1 (human multiple myeloma B lymphocyte cell line) whole cell lysate with ab253242 at 1/30 dilution. Western blot was performed from the immunoprecipitate using ab253242 at 1/500 dilution. VeriBlot for IP Detection Reagent (HRP) ([ab131366](#)), was used as secondary antibody at 1/1000 dilution.

Lane 1: U266B1 whole cell lysate 10 µg (Input).

Lane 2: ab253242 IP in U266B1 whole cell lysate.

Lane 3: Rabbit monoclonal IgG ([ab172730](#)) instead of ab253242 in U266B1 whole cell lysate.

Blocking and dilution buffer and concentration: 5% NFD/MTBST.
Exposure time: 10 seconds.

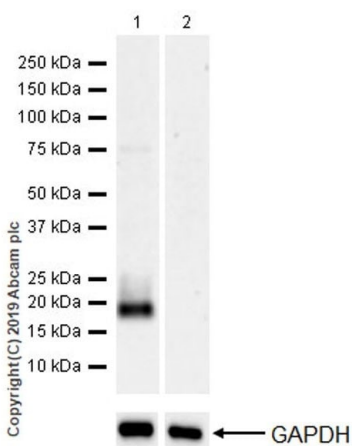


Flow Cytometry - Anti-BCMA antibody [EPR22457-260] (ab253242)

Flow cytometric analysis of HEK-293T (human epithelial cell line from embryonic kidney transformed with large T antigen) (left) or U266B1 (human multiple myeloma B lymphocyte cell line) (right) cells labeling BCMA with ab253242 at 1/60 dilution (red) compared with Rabbit IgG, monoclonal [EPR25A] - Isotype Control ([ab172730](#)) (black) and an unlabelled control (cells without incubation with primary antibody and secondary antibody) (blue). Goat Anti-Rabbit IgG H&L (Alexa Fluor® 488) ([ab150077](#)), at 1/2000 dilution was used as the secondary antibody.

Gated on viable cells.

Negative control: HEK-293T cells (PMID: 18025285).



Western blot - Anti-BCMA antibody [EPR22457-260]
(ab253242)

All lanes : Anti-BCMA antibody [EPR22457-260] (ab253242) at 1/1000 dilution

Lane 1 : U266B1 (human multiple myeloma B lymphocyte cell line) whole cell lysate

Lane 2 : HEK-293T (human epithelial cell line from embryonic kidney transformed with large T antigen) whole cell lysate

Lysates/proteins at 20 µg per lane.

Secondary

All lanes : Goat Anti-Rabbit IgG H&L (HRP) ([ab97051](#)) at 1/20000 dilution

Predicted band size: 20, 14 kDa

Observed band size: 19 kDa

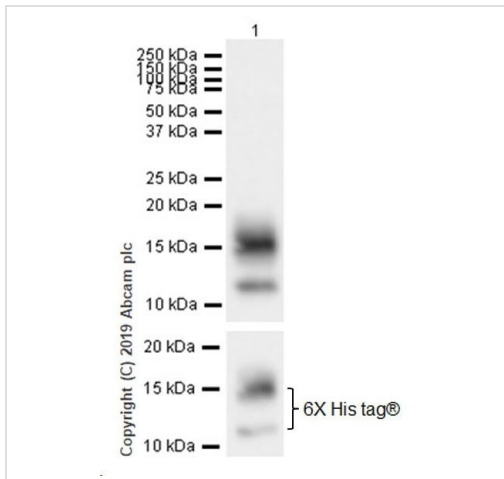
Exposure time: 3 minutes

Blocking and dilution buffer: 5% NFD/MTBST.

BCMA is a glycoprotein.

The molecular weight observed is consistent with what has been described in the literature (PMID: 23776238, 10908663, 8527407)

Negative control: HEK-293T (PMID: 18025285).



Western blot - Anti-BCMA antibody [EPR22457-260] (ab253242)

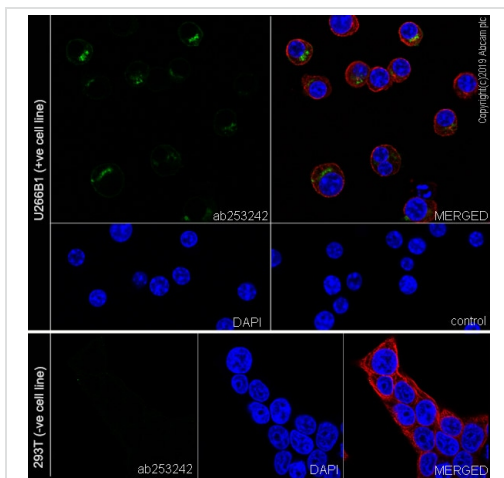
Anti-BCMA antibody [EPR22457-260] (ab253242) at 1/1000 dilution + Recombinant his-tagged human BCMA protein (**ab219697**, aa1-54) at 0.02 μ g

Secondary

Goat Anti-Rabbit IgG H&L (HRP) (**ab97051**) at 1/100000 dilution

Predicted band size: 20, 14 kDa

Blocking and dilution buffer: 5% NFD/MTBST.



Immunocytochemistry/ Immunofluorescence - Anti-BCMA antibody [EPR22457-260] (ab253242)

Immunofluorescent analysis of 4% paraformaldehyde-fixed, 0.1% Triton X-100 permeabilized U266B1 (human multiple myeloma B lymphocyte cell line) or HEK-293T (human epithelial cell line from embryonic kidney transformed with large T antigen) cells labeling BCMA with ab253242 at 1/50 dilution, followed by a Goat Anti-Rabbit IgG H&L (Alexa Fluor[®] 488) (**ab150077**) secondary antibody at 1/1000 dilution (green).

Confocal image showing cytoplasmic and weak membranous staining in U266B1 cell line (PMID: 8527407) is observed.


Negative control: HEK-293T cells (PMID: 18025285).

The nuclear counter stain is DAPI (blue). Tubulin is detected with Anti-alpha Tubulin antibody [DM1A] - Microtubule Marker (Alexa Fluor[®] 594) (**ab195889**) at 1/200 dilution (red).

Secondary antibody only control: Used PBS instead of primary

antibody, followed by Goat Anti-Rabbit IgG H&L (Alexa Fluor® 488) (**ab150077**) secondary antibody at 1/1000 dilution.

Why choose a recombinant antibody?



- Research with confidence**
Consistent and reproducible results
- Long-term and scalable supply**
Recombinant technology
- Success from the first experiment**
Confirmed specificity
- Ethical standards compliant**
Animal-free production

Anti-BCMA antibody [EPR22457-260] (ab253242)

Please note: All products are "FOR RESEARCH USE ONLY. NOT FOR USE IN DIAGNOSTIC PROCEDURES"

Our Abpromise to you: Quality guaranteed and expert technical support

- Replacement or refund for products not performing as stated on the datasheet
- Valid for 12 months from date of delivery
- Response to your inquiry within 24 hours
- We provide support in Chinese, English, French, German, Japanese and Spanish
- Extensive multi-media technical resources to help you
- We investigate all quality concerns to ensure our products perform to the highest standards

If the product does not perform as described on this datasheet, we will offer a refund or replacement. For full details of the Abpromise, please visit <https://www.abcam.cn/abpromise> or contact our technical team.

Terms and conditions

- Guarantee only valid for products bought direct from Abcam or one of our authorized distributors