

Anti-BCMA antibody - C-terminal ab5972

8 References [4 图像](#)

概述

产品名称	Anti-BCMA抗体- C-terminal
描述	兔多克隆抗体to BCMA - C-terminal
宿主	Rabbit
经测试应用	适用于: ICC/IF, IHC-P, WB
种属反应性	与反应: Human
免疫原	Synthetic peptide corresponding to Human BCMA (C terminal). (Peptide available as ab6087)
阳性对照	Human spleen tissue lysate, K562 or U937 whole cell lysates.
常规说明	<p>Members in the TNF superfamily regulate immune responses and induce apoptosis. Two novel members in the TNF family were recently identified and designated BAFF/BLyS/TALL1/THANK/zTNF4 and April/TALL2, respectively. BAFF was characterized as a B cell activator since it induced B cell proliferation and immunoglobulin secretion. April regulates immunological and non immunological cell growth. Three receptors, BCMA (for B cell maturation protein), TACI, and BAFFR, for BAFF were recently identified. BCMA, like TACI, binds BAFF and April. BAFF and its receptors induce B cell development and survival, activate NF-kappaB and c-jun N-terminal kinase, and are involved in B cell associated autoimmune diseases.</p> <p>The Life Science industry has been in the grips of a reproducibility crisis for a number of years. Abcam is leading the way in addressing this with our range of recombinant monoclonal antibodies and knockout edited cell lines for gold-standard validation. Please check that this product meets your needs before purchasing.</p> <p>If you have any questions, special requirements or concerns, please send us an inquiry and/or contact our Support team ahead of purchase. Recommended alternatives for this product can be found below, along with publications, customer reviews and Q&As</p>

性能

形式	Liquid
存放说明	Shipped at 4°C. Store at +4°C short term (1-2 weeks). Store at +4°C.
存储溶液	pH: 7.2 Preservative: 0.02% Sodium azide
纯度	Immunogen affinity purified

纯化说明	BCMA Antibody is affinity chromatography purified via peptide column.
Primary antibody说明	Members in the TNF superfamily regulate immune responses and induce apoptosis. Two novel members in the TNF family were recently identified and designated BAFF/BLyS/TALL1/THANK/zTNF4 and April/TALL2, respectively. BAFF was characterized as a B cell activator since it induced B cell proliferation and immunoglobulin secretion. April regulates immunological and non immunological cell growth. Three receptors, BCMA (for B cell maturation protein), TACI, and BAFFR, for BAFF were recently identified. BCMA, like TACI, binds BAFF and April. BAFF and its receptors induce B cell development and survival, activate NF-kappaB and c-jun N-terminal kinase, and are involved in B cell associated autoimmune diseases.
克隆	多克隆
同种型	IgG

应用

The Abpromise guarantee **Abpromise™**承诺保证使用ab5972于以下的经测试应用

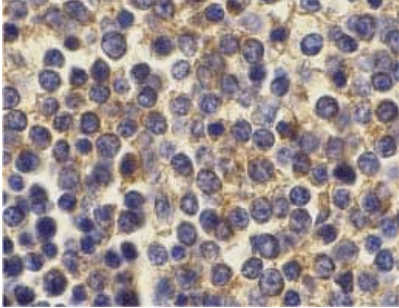
“应用说明”部分 下显示的仅为推荐的起始稀释度;实际最佳的稀释度/浓度应由使用者检定。

应用	Ab评论	说明
ICC/IF		Use a concentration of 20 µg/ml.
IHC-P		Use a concentration of 10 µg/ml.
WB		Use a concentration of 2 - 5 µg/ml. Predicted molecular weight: 20 kDa.

靶标

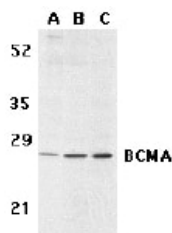
功能	Receptor for TNFSF13B/BLyS/BAFF and TNFSF13/APRIL. Promotes B-cell survival and plays a role in the regulation of humoral immunity. Activates NF-kappa-B and JNK.
组织特异性	Expressed in mature B-cells, but not in T-cells or monocytes.
疾病相关	Note=A chromosomal aberration involving TNFRSF17 is found in a form of T-cell acute lymphoblastic leukemia (T-ALL). Translocation t(4;16)(q26;p13) with IL2.
序列相似性	Contains 1 TNFR-Cys repeat.
细胞定位	Cell membrane. Endomembrane system. Perinuclear Golgi-like structures.

图片



ab5972 at 10µg/ml staining BCMA in human spleen cells by IHC

Immunohistochemistry (Formalin/PFA-fixed paraffin-embedded sections) - Anti-BCMA antibody - C-terminal (ab5972)



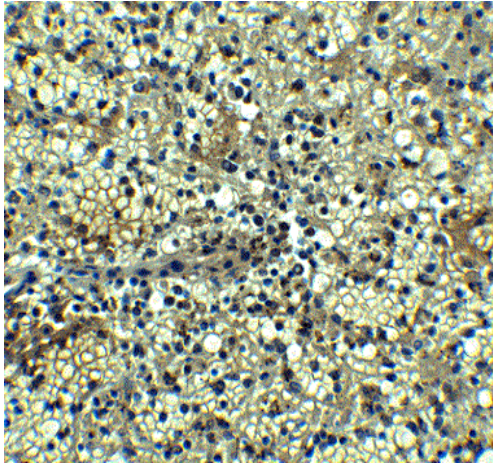
Western blot analysis of BCMA in human spleen (A) tissue lysate, K562 (B), and U937 (C) cell lysates with ab5972 at 5 µg/ml.

Western blot analysis of BCMA in human spleen (A) tissue lysate, K562 (B), and U937 (C) cell lysates with ab5972 at 5 µg/ml.

Western blot - Anti-BCMA antibody - C-terminal (ab5972)

Immunocytochemistry/ Immunofluorescence - Anti-BCMA antibody - C-terminal (ab5972)

Immunofluorescence of BCMA in Human Spleen cells using ab5972 at 10 ug/ml.



Immunohistochemistry of BCMA in human spleen tissue with BCMA antibody at 5 µg/ml.

Immunohistochemistry (Formalin/PFA-fixed paraffin-embedded sections) - Anti-BCMA antibody - C-terminal (ab5972)

Please note: All products are "FOR RESEARCH USE ONLY. NOT FOR USE IN DIAGNOSTIC PROCEDURES"

Our Abpromise to you: Quality guaranteed and expert technical support

- Replacement or refund for products not performing as stated on the datasheet
- Valid for 12 months from date of delivery
- Response to your inquiry within 24 hours
- We provide support in Chinese, English, French, German, Japanese and Spanish
- Extensive multi-media technical resources to help you
- We investigate all quality concerns to ensure our products perform to the highest standards

If the product does not perform as described on this datasheet, we will offer a refund or replacement. For full details of the Abpromise, please visit <https://www.abcam.cn/abpromise> or contact our technical team.

Terms and conditions

- Guarantee only valid for products bought direct from Abcam or one of our authorized distributors