

### Anti-Bcl-XL antibody [EPR16642] ab178844

**重组** RabMAb

**17 References**   **12 图像**

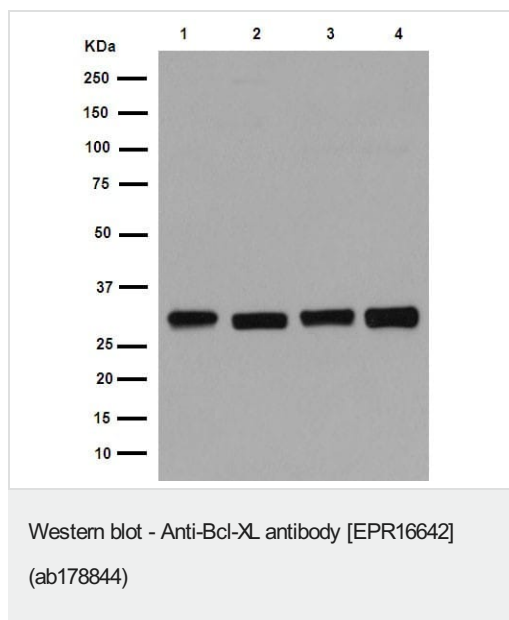
#### 概述

产品名称	Anti-Bcl-XL抗体[EPR16642]
描述	兔单克隆抗体[EPR16642] to Bcl-XL
宿主	Rabbit
经测试应用	<b>适用于:</b> IHC-P, WB, IP <b>不适用于:</b> Flow Cyt or ICC/IF
种属反应性	<b>与反应:</b> Mouse, Rat, Human
免疫原	Recombinant fragment. This information is proprietary to Abcam and/or its suppliers.
阳性对照	WB: Ramos, Jurkat, HeLa or K562 whole cell lysate. Mouse brain, heart, kidney, spleen. Rat brain, heart, kidney, spleen. C6, RAW 264.7, PC-12 or NIH/3T3 whole cell lysate. IHC-P: Human kidney, mouse colon, rat testis.
常规说明	This product is a recombinant monoclonal antibody, which offers several advantages including: <ul style="list-style-type: none"> <li>- High batch-to-batch consistency and reproducibility</li> <li>- Improved sensitivity and specificity</li> <li>- Long-term security of supply</li> <li>- Animal-free production</li> </ul> For more information <a href="#">see here</a> . Our RabMAb <sup>®</sup> technology is a patented hybridoma-based technology for making rabbit monoclonal antibodies. For details on our patents, please refer to <a href="#">RabMAb<sup>®</sup> patents</a> .

#### 性能

形式	Liquid
存放说明	Shipped at 4°C. Store at +4°C short term (1-2 weeks). Upon delivery aliquot. Store at -20°C long term. Avoid freeze / thaw cycle.
存储溶液	Preservative: 0.01% Sodium azide Constituents: 59% PBS, 40% Glycerol, 0.05% BSA
纯度	Protein A purified
克隆	单克隆
克隆编号	EPR16642

同种型	IgG	
应用		
<div>The Abpromise guarantee</div> <div><b>Abpromise™</b>承诺保证使用ab178844于以下的经测试应用</div> <div>“应用说明”部分 下显示的仅为推荐的起始稀释度;实际最佳的稀释度/浓度应由使用者检定。</div>		
应用	Ab评论	说明
IHC-P		1/2000. Perform heat mediated antigen retrieval with Tris/EDTA buffer pH 9.0 before commencing with IHC staining protocol.
WB		1/20000. Detects a band of approximately 30 kDa (predicted molecular weight: 26 kDa).
IP		1/70.
应用说明	Is unsuitable for Flow Cyt or ICC/IF.	
靶标		
功能	Potent inhibitor of cell death. Inhibits activation of caspases (By similarity). Appears to regulate cell death by blocking the voltage-dependent anion channel (VDAC) by binding to it and preventing the release of the caspase activator, CYC1, from the mitochondrial membrane. Isoform Bcl-X(S) promotes apoptosis.	
组织特异性	Bcl-X(S) is expressed at high levels in cells that undergo a high rate of turnover, such as developing lymphocytes. In contrast, Bcl-X(L) is found in tissues containing long-lived postmitotic cells, such as adult brain.	
序列相似性	Belongs to the Bcl-2 family.	
结构域	The BH4 motif is required for anti-apoptotic activity. The BH1 and BH2 motifs are required for both heterodimerization with other Bcl-2 family members and for repression of cell death.	
翻译后修饰	Proteolytically cleaved by caspases during apoptosis. The cleaved protein, lacking the BH4 motif, has pro-apoptotic activity.	
细胞定位	Mitochondrion membrane. Nucleus membrane. Mitochondrial membranes and perinuclear envelope.	
图片		



**All lanes :** Anti-Bcl-XL antibody [EPR16642] (ab178844) at 1/20000 dilution

**Lane 1 :** Ramos (Human Burkitt's lymphoma cell line) whole cell lysate

**Lane 2 :** Jurkat (Human T cell leukemia cells from peripheral blood) whole cell lysate

**Lane 3 :** HeLa (Human epithelial cells from cervix adenocarcinoma) whole cell lysate

**Lane 4 :** K562 (Human chronic myelogenous leukemia cells from bone marrow) whole cell lysate

Lysates/proteins at 20 µg per lane.

### Secondary

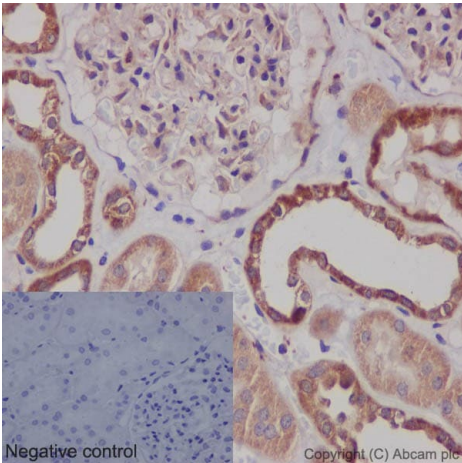
**All lanes :** Goat Anti-Rabbit IgG, (H+L), Peroxidase conjugated at 1/1000 dilution

Developed using the ECL technique.

**Predicted band size:** 26 kDa

Blocking buffer and concentration: 5% NFDM/TBST

Diluting buffer and concentration: 5% NFDM /TBST



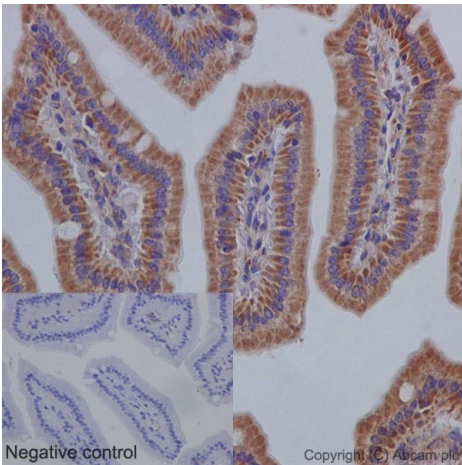
Immunohistochemistry (Formalin/PFA-fixed paraffin-embedded sections) - Anti-Bcl-XL antibody [EPR16642] (ab178844)

Immunohistochemical analysis of paraffin-embedded Human kidney tissue labeling Bcl-XL with ab178844 at 1:2000 dilution followed by prediluted HRP Polymer for Rabbit/Mouse IgG. Counter stained with hematoxylin.

Cytoplasmic staining on epithelial cells of tubules and glomeruli of kidney is observed.

Negative control: Using PBS instead of primary ab, secondary ab as above.

Perform heat mediated antigen retrieval with Tris/EDTA buffer pH 9.0 before commencing with IHC staining protocol.



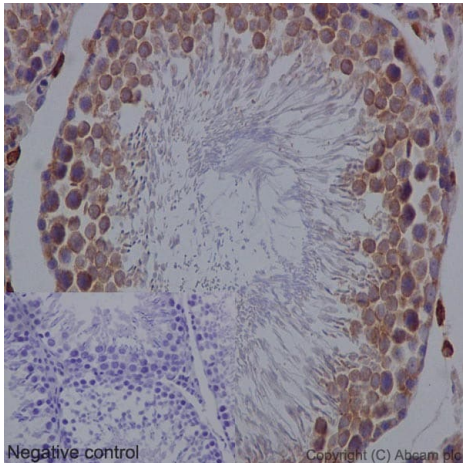
Immunohistochemistry (Formalin/PFA-fixed paraffin-embedded sections) - Anti-Bcl-XL antibody [EPR16642] (ab178844)

Immunohistochemical analysis of paraffin-embedded Mouse colon tissue labeling Bcl-XL with ab178844 at a 1/2000 dilution followed by prediluted HRP Polymer for Rabbit/Mouse IgG. Counter stained with hematoxylin.

Cytoplasm staining on epithelial cells of mouse colon tissue is observed.

Negative control: Using PBS instead of primary ab, secondary ab as above.

Perform heat mediated antigen retrieval with Tris/EDTA buffer pH 9.0 before commencing with IHC staining protocol.



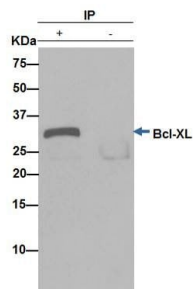
Immunohistochemistry (Formalin/PFA-fixed paraffin-embedded sections) - Anti-Bcl-XL antibody  
[EPR16642] (ab178844)

Immunohistochemical analysis of paraffin-embedded Rat testis labeling Bcl-XL with ab178844 at a 1/2000 dilution followed by prediluted HRP Polymer for Rabbit/Mouse IgG. Counter stained with hematoxylin.

Cytoplasm staining on epithelial cells of testis is observed.

Negative control: Using PBS instead of primary ab, secondary ab as above.

Perform heat mediated antigen retrieval with Tris/EDTA buffer pH 9.0 before commencing with IHC staining protocol.

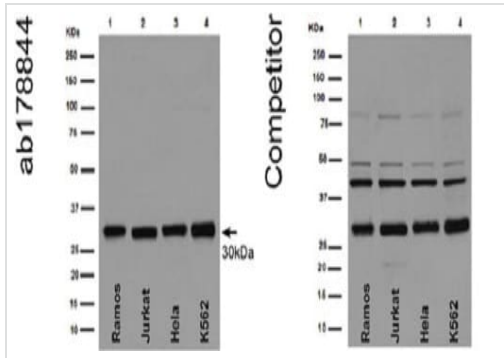


Immunoprecipitation - Anti-Bcl-XL antibody  
[EPR16642] (ab178844)

Bcl-XL/S was immunoprecipitated from 1mg of Ramos (Human Burkitt's lymphoma cell line) whole cell extract with ab178844 at 1/70 dilution. Western blot was performed of the immunoprecipitate using ab178844 at 1/1000 dilution. Anti-Rabbit IgG (HRP), specific to the non-reduced form of IgG, was used as secondary antibody at 1/1500 dilution. Left lane: Ramos whole cell extract. Right lane: PBS instead of Ramos whole cell extract.

Blocking buffer and concentration: 5% NFDm/TBST. Diluting buffer and concentration:

5% NFDm/TBST.



Western blot - Anti-Bcl-XL antibody [EPR16642]  
(ab178844)

**All lanes** : Anti-Bcl-XL/S [EPR16642] antibody (ab178844) at 1/20000 dilution, and a competitor's rabbit polyclonal antibody at 1/100 dilution

**Lane 1** : Ramos (Human Burkitt's lymphoma cell line) whole cell lysate

**Lane 2** : Jurkat (Human T cell leukemia cells from peripheral blood) whole cell lysate

**Lane 3** : HeLa (Human epithelial cells from cervix adenocarcinoma) whole cell lysate

**Lane 4** : K562 (Human chronic myelogenous leukemia cells from bone marrow) whole cell lysate

### Secondary

**All lanes** : Goat Anti-Rabbit IgG (H+L), Peroxidase conjugated at 1/1000 dilution

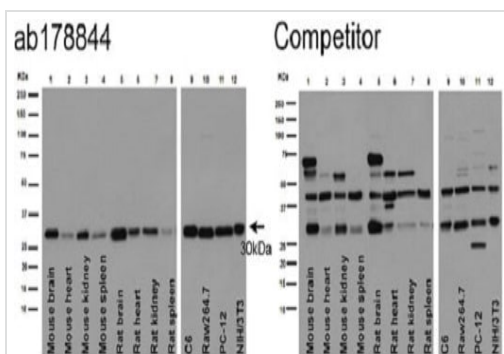
Developed using the ECL technique.

**Predicted band size:** 26 kDa

**Observed band size:** 30 kDa

This western blot image is a comparison between ab178844 and a competitor's leading rabbit polyclonal antibody.

Blocking buffer and concentration: 5% NFDM/TBST



Western blot - Anti-Bcl-XL antibody [EPR16642]  
(ab178844)

**All lanes** : Anti-Bcl-XL/S [EPR16642] antibody (ab178844) at 1/20000 dilution, and a competitor's rabbit polyclonal antibody at 1/100 dilution

**Lane 1** : Mouse brain

**Lane 2** : Mouse heart

**Lane 3** : Mouse kidney

**Lane 4** : Mouse spleen

**Lane 5** : Rat brain

**Lane 6** : Rat heart

**Lane 7** : Rat kidney

**Lane 8** : Rat spleen

**Lane 9** : C6 whole cell lysates

**Lane 10 :** Raw264.7 whole cell lysates

**Lane 11 :** PC-12 whole cell lysates

**Lane 12 :** NIH/3T3 whole cell lysates

## Secondary

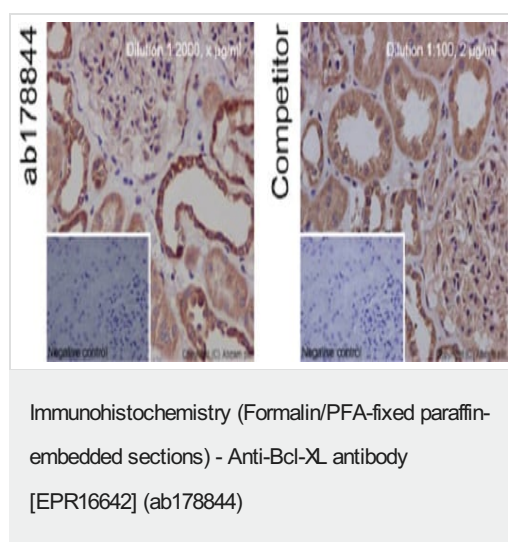
**All lanes :** Goat Anti-Rabbit IgG, (H+L), Peroxidase conjugated

**Predicted band size:** 26 kDa

**Observed band size:** 30 kDa

This western blot image is a comparison between ab178844 and a competitor's leading rabbit polyclonal antibody.

Blocking buffer and concentration: 5% NFDM/TBST



This IHC image is a comparison between ab178844 and a competitor's leading rabbit polyclonal antibody in which both antibodies were tested on Human kidney tissue.

Immunohistochemical analysis of paraffin-embedded Human kidney tissue labeling Bcl-XL with ab178844 at 1/2000 dilution followed by prediluted HRP Polymer for Rabbit/Mouse IgG. Counter stained with hematoxylin.

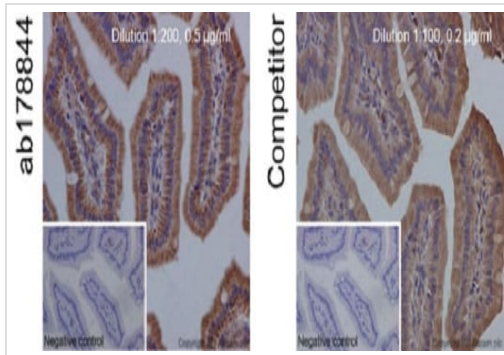
Cytoplasmic staining on epithelial cells of tubules and glomeruli of kidney is observed.

Negative control: Using PBS instead of primary ab, secondary ab as above.

Immunohistochemical analysis of paraffin-embedded Human kidney tissue labeling Bcl-XL with competitor rabbit polyclonal at 1/100 dilution followed by prediluted HRP Polymer for Rabbit/Mouse IgG. Counter stained with hematoxylin.

Perform heat mediated antigen retrieval with Tris/EDTA buffer pH 9.0 before commencing with IHC staining protocol.





Immunohistochemistry (Formalin/PFA-fixed paraffin-embedded sections) - Anti-Bcl-XL antibody [EPR16642] (ab178844)

This IHC image is a comparison between ab178844 and competitor's leading rabbit polyclonal in which both antibodies were tested on Mouse colon tissue.

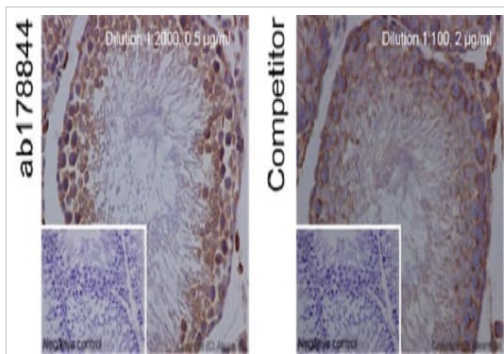
Immunohistochemical analysis of paraffin-embedded Mouse colon tissue labeling Bcl-XL with ab178844 at a 1/2000 dilution followed by prediluted HRP Polymer for Rabbit/Mouse IgG. Counter stained with hematoxylin.

Cytoplasm staining on epithelial cells of mouse colon tissue is observed.

Negative control: Using PBS instead of primary ab, secondary ab as above.

Immunohistochemical analysis of paraffin-embedded Mouse colon tissue labeling Bcl-XL with competitor rabbit polyclonal antibody at a 1/100 dilution followed by prediluted HRP Polymer for Rabbit/Mouse IgG. Counter stained with hematoxylin.

Perform heat mediated antigen retrieval with Tris/EDTA buffer pH 9.0 before commencing with IHC staining protocol.



Immunohistochemistry (Formalin/PFA-fixed paraffin-embedded sections) - Anti-Bcl-XL antibody [EPR16642] (ab178844)

This IHC image is a comparison between ab178844 and a competitor's leading rabbit polyclonal antibody in which both antibodies were tested on Rat testis tissue.

Immunohistochemical analysis of paraffin-embedded Rat testis labeling Bcl-XL with ab178844 at a 1/2000 dilution followed by prediluted HRP Polymer for Rabbit/Mouse IgG. Counter stained with hematoxylin.

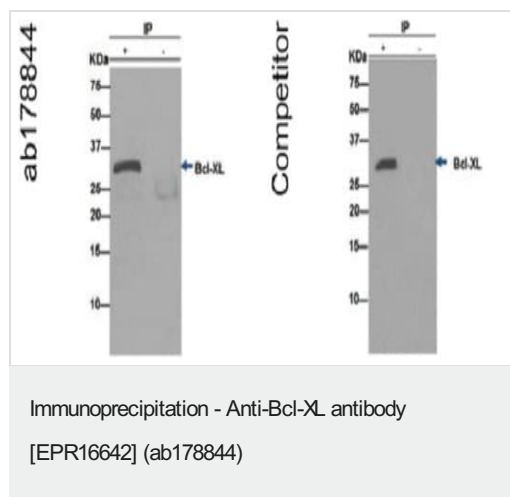
Cytoplasm staining on epithelial cells of testis is observed.

Negative control: Using PBS instead of primary ab, secondary ab as above.

Immunohistochemical analysis of paraffin-embedded Rat testis labeling Bcl-XL with competitor rabbit polyclonal antibody at a 1/100 dilution followed by prediluted HRP Polymer for Rabbit/Mouse IgG. Counter stained with hematoxylin.

Perform heat mediated antigen retrieval with Tris/EDTA buffer pH 9.0 before commencing with IHC staining protocol.





This immunoprecipitation image is a comparison between ab178844 and a competitor's leading rabbit polyclonal antibody.

Bcl-XL/S was immunoprecipitated from 1mg of Ramos (Human Burkitt's lymphoma cell line) whole cell extract with ab178844 at 1/70 dilution. Western blot was performed of the immunoprecipitate using ab178844 at 1/1000 dilution. Anti-Rabbit IgG (HRP), specific to the non-reduced form of IgG, was used as secondary antibody at 1/1500 dilution. Left lane: Ramos whole cell extract. Right lane: PBS instead of Ramos whole cell extract.

Bcl-XL/S was immunoprecipitated from 1mg of Ramos (Human Burkitt's lymphoma cell line) whole cell extract with competitor rabbit polyclonal antibody at 1/12 dilution. Western blot was performed of the immunoprecipitate using competitor antibody at 1/100 dilution. Anti-Rabbit IgG (HRP), specific to the non-reduced form of IgG, was used as secondary antibody at 1/1500 dilution. Left lane: Ramos whole cell extract. Right lane: PBS instead of Ramos whole cell extract.

Blocking buffer and concentration: 5% NFDM/TBST.

Diluting buffer and concentration: 5% NFDM/TBST.

Why choose a recombinant antibody?

**Research with confidence**  
Consistent and reproducible results

**Long-term and scalable supply**  
Recombinant technology

**Success from the first experiment**  
Confirmed specificity

**Ethical standards compliant**  
Animal-free production

Anti-Bcl-XL antibody [EPR16642] (ab178844)

**Please note:** All products are "FOR RESEARCH USE ONLY. NOT FOR USE IN DIAGNOSTIC PROCEDURES"

### Our Abpromise to you: Quality guaranteed and expert technical support

- Replacement or refund for products not performing as stated on the datasheet
- Valid for 12 months from date of delivery
- Response to your inquiry within 24 hours
- We provide support in Chinese, English, French, German, Japanese and Spanish
- Extensive multi-media technical resources to help you

- We investigate all quality concerns to ensure our products perform to the highest standards

If the product does not perform as described on this datasheet, we will offer a refund or replacement. For full details of the Abpromise, please visit <https://www.abcam.cn/abpromise> or contact our technical team.

### Terms and conditions

---

- Guarantee only valid for products bought direct from Abcam or one of our authorized distributors