

Anti-Bcl-2 antibody ab59348

★★★★★ [3 Abreviews](#) [601 References](#) [3 图像](#)

概述

产品名称	Anti-Bcl-2抗体
描述	兔多克隆抗体to Bcl-2
宿主	Rabbit
经测试应用	适用于: WB, IHC-P, ICC/IF
种属反应性	与反应: Human
免疫原	Synthetic peptide corresponding to Human Bcl-2. Sequence: The antiserum was produced against synthesized non-phosphopeptide derived from human BCL-2 around the phosphorylation site of threonine 69 (A-R-TP-S-P).
	Database link: P10415 Run BLAST with Run BLAST with
常规说明	Store at -20°C for year The Life Science industry has been in the grips of a reproducibility crisis for a number of years. Abcam is leading the way in addressing this with our range of recombinant monoclonal antibodies and knockout edited cell lines for gold-standard validation. Please check that this product meets your needs before purchasing. If you have any questions, special requirements or concerns, please send us an inquiry and/or contact our Support team ahead of purchase. Recommended alternatives for this product can be found below, along with publications, customer reviews and Q&As

性能

形式	Liquid
存放说明	Shipped at 4°C. Upon delivery aliquot and store at -20°C. Avoid freeze / thaw cycles.
存储溶液	pH: 7 Preservative: 0.02% Sodium azide Constituents: PBS, 50% Glycerol, 0.87% Sodium chloride

纯度	Without Mg ²⁺ and Ca ²⁺
纯化说明	Immunogen affinity purified
克隆	Affinity purified from rabbit antiserum by affinity chromatography, using epitope specific immunogen
同种型	多克隆 IgG

应用

The Abpromise guarantee **Abpromise™**承诺保证使用ab59348于以下的经测试应用

“应用说明”部分 下显示的仅为推荐的起始稀释度;实际最佳的稀释度/浓度应由使用者检定。

应用	Ab评论	说明
WB	★★★★★ (2)	1/500 - 1/1000. Detects a band of approximately 26 kDa. Positive control: K562 cell lysate. Please see WB protocol details in the image legend.
IHC-P	★★★★☆ (1)	1/50 - 1/100.
ICC/IF		1/100 - 1/500.

靶标

功能	Suppresses apoptosis in a variety of cell systems including factor-dependent lymphohematopoietic and neural cells. Regulates cell death by controlling the mitochondrial membrane permeability. Appears to function in a feedback loop system with caspases. Inhibits caspase activity either by preventing the release of cytochrome c from the mitochondria and/or by binding to the apoptosis-activating factor (APAF-1). May attenuate inflammation by impairing NLRP1-inflammasome activation, hence CASP1 activation and IL1B release (PubMed:17418785).
组织特异性	Expressed in a variety of tissues.
疾病相关	A chromosomal aberration involving BCL2 has been found in chronic lymphatic leukemia. Translocation t(14;18)(q32;q21) with immunoglobulin gene regions. BCL2 mutations found in non-Hodgkin lymphomas carrying the chromosomal translocation could be attributed to the Ig somatic hypermutation mechanism resulting in nucleotide transitions.
序列相似性	Belongs to the Bcl-2 family.
结构域	BH1 and BH2 domains are required for the interaction with BAX and for anti-apoptotic activity. The BH4 motif is required for anti-apoptotic activity and for interaction with RAF1 and EGLN3. The loop between motifs BH4 and BH3 is required for the interaction with NLRP1.
翻译后修饰	Phosphorylation/dephosphorylation on Ser-70 regulates anti-apoptotic activity. Growth factor-stimulated phosphorylation on Ser-70 by PKC is required for the anti-apoptosis activity and occurs during the G2/M phase of the cell cycle. In the absence of growth factors, BCL2 appears to be phosphorylated by other protein kinases such as ERKs and stress-activated kinases. Phosphorylated by MAPK8/JNK1 at Thr-69, Ser-70 and Ser-87, wich stimulates starvation-induced autophagy. Dephosphorylated by protein phosphatase 2A (PP2A).

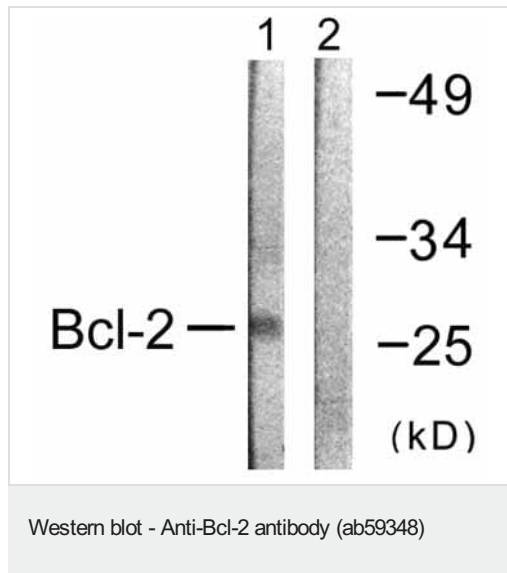
Proteolytically cleaved by caspases during apoptosis. The cleaved protein, lacking the BH4 motif, has pro-apoptotic activity, causes the release of cytochrome c into the cytosol promoting further caspase activity.

Monoubiquitinated by PARK2, leading to increase its stability. Ubiquitinated by SCF(FBXO10), leading to its degradation by the proteasome.

细胞定位

Mitochondrion outer membrane. Nucleus membrane. Endoplasmic reticulum membrane.

图片



All lanes : Anti-Bcl-2 antibody (ab59348) at 1/500 dilution

Lane 1 : Extracts from K562 cells with no immunizing peptide

Lane 2 : Extracts from K562 cells with immunizing peptide

Lysates/proteins at 40 µg per lane.

Observed band size: 26 kDa

Blocking buffer: 5% (w/v) non-fat dry milk in TBST.

Primary antibody dilution buffer: 5%(w/v)non-fat dried milk,0.1% (v/v), Tween-20 in TBST.

Secondary antibody dilution buffer: 5%(w/v)non-fat dried milk,0.1% (v/v),Tween-20 in TBST.

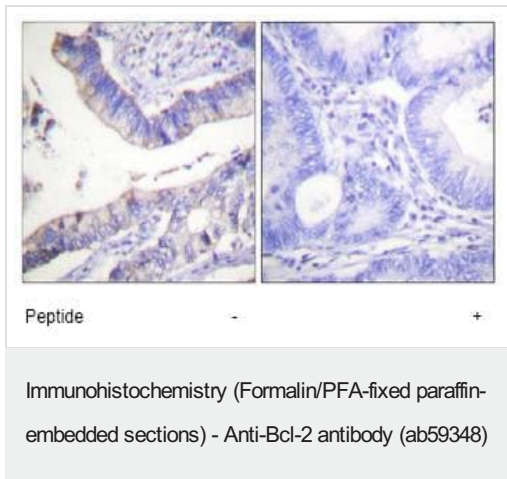
12% SDS gel. Nitrocellulose membrane.

Blocking: Room temperature for 2 hours or overnight at 4°C. Then wash 3x for 5 minutes with 0.05% blocking buffer.

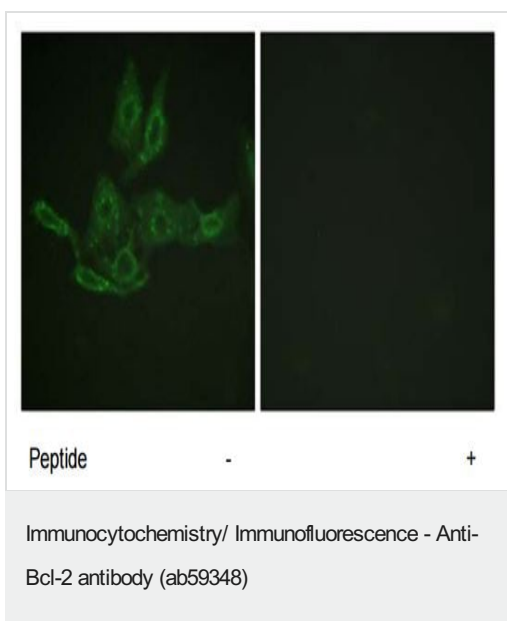
Primary antibody incubation: diluted in TBST at 1/500. Incubate overnight with 4 degrees shaking. Then, in 0.05% TBST, wash membrane 3-4 times for 10min.

Secondary antibody incubation: diluted in TBST at 1/2000. Incubate 37°C for 1 hour. Then, in 0.05% TBST, wash membrane 3-4 times for 10min.

ECL development.



ab59348, at a 1/50 dilution, staining human Bcl-2 in colon carcinoma, using Immunohistochemistry, Paraffin embedded tissue, in the absence (left image) and presence of the immunizing peptide (right image).



Immunocytochemistry/Immunofluorescence analysis of HepG2 cells labelling Bcl-2 with ab59348 in the absence (left image) and presence of the immunizing peptide (right image).

Please note: All products are "FOR RESEARCH USE ONLY. NOT FOR USE IN DIAGNOSTIC PROCEDURES"

Our Abpromise to you: Quality guaranteed and expert technical support

- Replacement or refund for products not performing as stated on the datasheet
- Valid for 12 months from date of delivery
- Response to your inquiry within 24 hours
- We provide support in Chinese, English, French, German, Japanese and Spanish
- Extensive multi-media technical resources to help you
- We investigate all quality concerns to ensure our products perform to the highest standards

If the product does not perform as described on this datasheet, we will offer a refund or replacement. For full details of the Abpromise, please visit <https://www.abcam.cn/abpromise> or contact our technical team.

Terms and conditions

- Guarantee only valid for products bought direct from Abcam or one of our authorized distributors