


### Anti-Bcl-2 antibody [100/D5] - BSA and Azide free ab212800

#### 3 图像

#### 概述

|              |   |
|--------------|---|
| <b>产品名称</b>  | Anti-Bcl-2抗体[100/D5] - BSA and Azide free   |
| <b>描述</b>    | 小鼠单克隆抗体[100/D5] to Bcl-2 - BSA and Azide free   |
| <b>宿主</b>    | Mouse   |
| <b>经测试应用</b> | <b>适用于:</b> WB, Flow Cyt, IHC-P   |
| <b>种属反应性</b> | <b>与反应:</b> Human<br><b>预测可用于:</b> Cow  <b>不与反应:</b> Mouse, Rat  |
| <b>免疫原</b>   | Synthetic peptide corresponding to Human Bcl-2 aa 1-100 (Cysteine residue).<br>Database link: <a href="#">P10415</a><br><a href="#">Run BLAST with</a> <a href="#">Run BLAST with</a>   |
| <b>阳性对照</b>  | Jurkat, K562, HL60, or HeLa Cells. Tonsil or follicular lymphomas. Non- Hodgkin's lymphoma tissue. Human skin lysate.   |
| <b>常规说明</b>  | <p>The Life Science industry has been in the grips of a reproducibility crisis for a number of years. Abcam is leading the way in addressing this with our range of recombinant monoclonal antibodies and knockout edited cell lines for gold-standard validation. Please check that this product meets your needs before purchasing.</p> <p>If you have any questions, special requirements or concerns, please send us an inquiry and/or contact our Support team ahead of purchase. Recommended alternatives for this product can be found below, along with publications, customer reviews and Q&amp;As</p> |

#### 性能

|             |   |
|-------------|---|
| <b>形式</b>   | Liquid  |
| <b>存放说明</b> | Shipped at 4°C. Store at +4°C short term (1-2 weeks). Upon delivery aliquot. Store at -20°C long term. Avoid freeze / thaw cycle. |
| <b>存储溶液</b> | pH: 7.2<br>Constituent: 100% PBS  |
| <b>无载体</b>  | 是   |
| <b>纯度</b>   | Protein A/G purified  |
| <b>纯化说明</b> | ab212800 is purified from Bioreactor Concentrate by Protein A/G.  |
| <b>克隆</b>   | 单克隆   |

|      |        |
|------|--------|
| 克隆编号 | 100/D5 |
| 同种型  | IgG1   |
| 轻链类型 | kappa  |

## 应用

**The Abpromise guarantee**      **Abpromise™**承诺保证使用ab212800于以下的经测试应用

“应用说明”部分下显示的仅为推荐的起始稀释度;实际最佳的稀释度/浓度应由使用者检定。

| 应用       | Ab评论 | 说明  |
|----------|------|---|
| WB       |      | Use a concentration of 1 - 2 µg/ml. Predicted molecular weight: 26 kDa.   |
| Flow Cyt |      | Use 1-2µg for 10 <sup>6</sup> cells. (in 0.1ml volume)  |
| IHC-P    |      | Use a concentration of 1 - 2 µg/ml. Perform heat mediated antigen retrieval with Tris/EDTA buffer pH 9.0 before commencing with IHC staining protocol. (for 30 minutes at RT) |

## 靶标

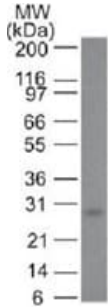
|              |  |
|--------------|--|
| <b>功能</b>    | Suppresses apoptosis in a variety of cell systems including factor-dependent lymphohematopoietic and neural cells. Regulates cell death by controlling the mitochondrial membrane permeability. Appears to function in a feedback loop system with caspases. Inhibits caspase activity either by preventing the release of cytochrome c from the mitochondria and/or by binding to the apoptosis-activating factor (APAF-1). May attenuate inflammation by impairing NLRP1-inflammasome activation, hence CASP1 activation and IL1B release (PubMed:17418785).   |
| <b>组织特异性</b> | Expressed in a variety of tissues.   |
| <b>疾病相关</b>  | A chromosomal aberration involving BCL2 has been found in chronic lymphatic leukemia. Translocation t(14;18)(q32;q21) with immunoglobulin gene regions. BCL2 mutations found in non-Hodgkin lymphomas carrying the chromosomal translocation could be attributed to the Ig somatic hypermutation mechanism resulting in nucleotide transitions.  |
| <b>序列相似性</b> | Belongs to the Bcl-2 family.   |
| <b>结构域</b>   | BH1 and BH2 domains are required for the interaction with BAX and for anti-apoptotic activity. The BH4 motif is required for anti-apoptotic activity and for interaction with RAF1 and EGLN3. The loop between motifs BH4 and BH3 is required for the interaction with NLRP1.  |
| <b>翻译后修饰</b> | Phosphorylation/dephosphorylation on Ser-70 regulates anti-apoptotic activity. Growth factor-stimulated phosphorylation on Ser-70 by PKC is required for the anti-apoptosis activity and occurs during the G2/M phase of the cell cycle. In the absence of growth factors, BCL2 appears to be phosphorylated by other protein kinases such as ERKs and stress-activated kinases. Phosphorylated by MAPK8/JNK1 at Thr-69, Ser-70 and Ser-87, wich stimulates starvation-induced autophagy. Dephosphorylated by protein phosphatase 2A (PP2A). Proteolytically cleaved by caspases during apoptosis. The cleaved protein, lacking the BH4 motif, has pro-apoptotic activity, causes the release of cytochrome c into the cytosol promoting further caspase activity. |

Monoubiquitinated by PARK2, leading to increase its stability. Ubiquitinated by SCF(FBXO10), leading to its degradation by the proteasome.

## 细胞定位

Mitochondrion outer membrane. Nucleus membrane. Endoplasmic reticulum membrane.

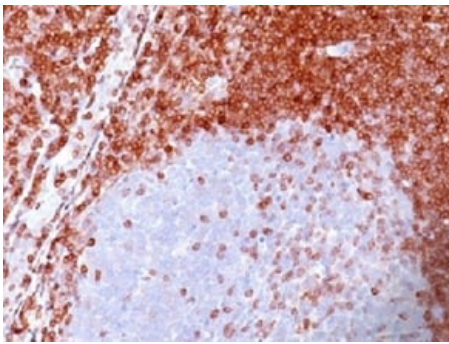
## 图片



Western blot - Anti-Bcl-2 antibody [100/D5] - BSA and Azide free (ab212800)

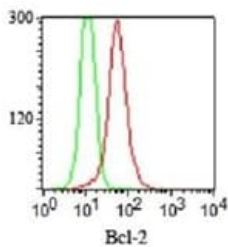
Anti-Bcl-2 antibody [100/D5] - BSA and Azide free (ab212800) at 1  $\mu\text{g/ml}$  + Human skin lysate

**Predicted band size:** 26 kDa



Immunohistochemistry (Formalin/PFA-fixed paraffin-embedded sections) - Anti-Bcl-2 antibody [100/D5] - BSA and Azide free (ab212800)

Immunohistochemical analysis of formalin-fixed, paraffin-embedded Human non-Hodgkin's Lymphoma tissue labeling Bcl-2 with ab212800 at 1  $\mu\text{g/ml}$ .



Flow Cytometry - Anti-Bcl-2 antibody [100/D5] - BSA and Azide free (ab212800)

Flow cytometric analysis of Jurkat cells labeling Bcl-2 with ab212800 at 1  $\mu\text{g}/10^6$  cells (red), compared with an isotype control (green).

**Please note:** All products are "FOR RESEARCH USE ONLY. NOT FOR USE IN DIAGNOSTIC PROCEDURES"

## **Our Abpromise to you: Quality guaranteed and expert technical support**

---

- Replacement or refund for products not performing as stated on the datasheet
- Valid for 12 months from date of delivery
- Response to your inquiry within 24 hours
  
- We provide support in Chinese, English, French, German, Japanese and Spanish
- Extensive multi-media technical resources to help you
- We investigate all quality concerns to ensure our products perform to the highest standards

If the product does not perform as described on this datasheet, we will offer a refund or replacement. For full details of the Abpromise, please visit <https://www.abcam.cn/abpromise> or contact our technical team.

## **Terms and conditions**

---

- Guarantee only valid for products bought direct from Abcam or one of our authorized distributors