

Anti-B7H4 antibody [EPR20236] ab209242

重组 RabMAb

10 References [7 图像](#)

概述

产品名称	Anti-B7H4抗体[EPR20236]
描述	兔单克隆抗体[EPR20236] to B7H4
宿主	Rabbit
经测试应用	适用于: ICC/IF, IHC-P, WB
种属反应性	与反应: Human
免疫原	Recombinant fragment. This information is proprietary to Abcam and/or its suppliers.
阳性对照	WB: SK-BR-3 and T-47D whole cell lysates; Human breast cancer lysate. IHC-P: Human breast, breast cancer and kidney tissues. ICC/IF: SK-BR-3 cells.
常规说明	<p>This product is a recombinant monoclonal antibody, which offers several advantages including:</p> <ul style="list-style-type: none"> - High batch-to-batch consistency and reproducibility - Improved sensitivity and specificity - Long-term security of supply - Animal-free production <p>For more information see here.</p> <p>Our RabMAb[®] technology is a patented hybridoma-based technology for making rabbit monoclonal antibodies. For details on our patents, please refer to RabMAb[®] patents.</p>

性能

形式	Liquid
存放说明	Shipped at 4°C. Store at +4°C short term (1-2 weeks). Upon delivery aliquot. Store at -20°C long term. Avoid freeze / thaw cycle.
存储溶液	<p>pH: 7.2</p> <p>Preservative: 0.01% Sodium azide</p> <p>Constituents: 40% Glycerol (glycerin, glycerine), PBS, 0.05% BSA</p>
纯度	Protein A purified
克隆	单克隆
克隆编号	EPR20236
同种型	IgG

应用

The Abpromise guarantee **Abpromise™**承诺保证使用ab209242于以下的经测试应用

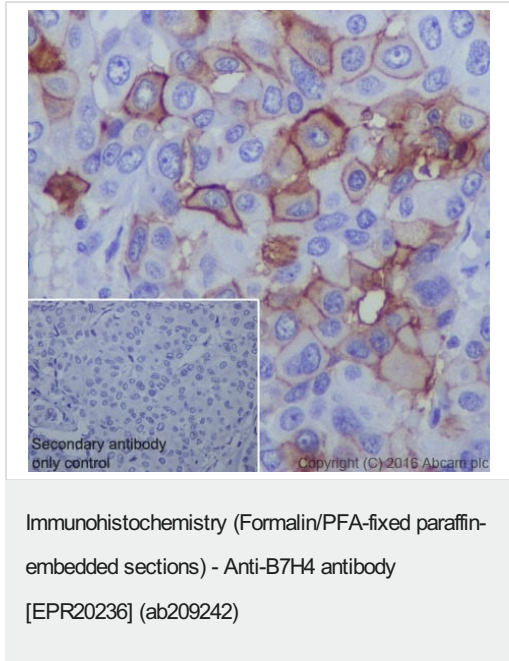
“应用说明”部分 下显示的仅为推荐的起始稀释度;实际最佳的稀释度/浓度应由使用者检定。

应用	Ab评论	说明
ICC/IF		1/250.
IHC-P		1/1000. Perform heat mediated antigen retrieval with citrate buffer pH 6 before commencing with IHC staining protocol.
WB		1/1000. Detects a band of approximately 65, 45, 28, 18 kDa (predicted molecular weight: 31 kDa).

靶标

功能	Negatively regulates T-cell-mediated immune response by inhibiting T-cell activation, proliferation, cytokine production and development of cytotoxicity. When expressed on the cell surface of tumor macrophages, plays an important role, together with regulatory T-cells (Treg), in the suppression of tumor-associated antigen-specific T-cell immunity. Involved in promoting epithelial cell transformation.
组织特异性	Overexpressed in breast, ovarian, endometrial, renal cell (RCC) and non-small-cell lung cancers (NSCLC). Expressed on activated T- and B-cells, monocytes and dendritic cells, but not expressed in most normal tissues (at protein level). Widely expressed, including in kidney, liver, lung, ovary, placenta, spleen and testis.
序列相似性	Belongs to the immunoglobulin superfamily. BTN/MOG family. Contains 2 Ig-like V-type (immunoglobulin-like) domains.
翻译后修饰	N-glycosylated.
细胞定位	Cell membrane. Expressed at the cell surface. A soluble form has also been detected.

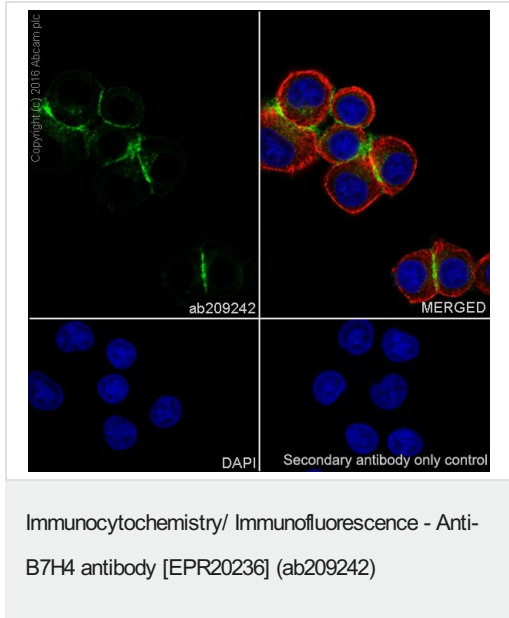
图片



Immunohistochemical analysis of paraffin-embedded human breast cancer tissue labeling B7H4 with ab209242 at 1/1000 dilution, followed by Goat Anti-Rabbit IgG H&L (HRP) ready to use. Membranous and weak cytoplasmic staining on tumor cells of human breast cancer is observed [PMID:15756008]. Counter stained with Hematoxylin.

Secondary antibody only control: Used PBS instead of primary antibody, secondary antibody is Goat Anti-Rabbit IgG H&L (HRP) ready to use.

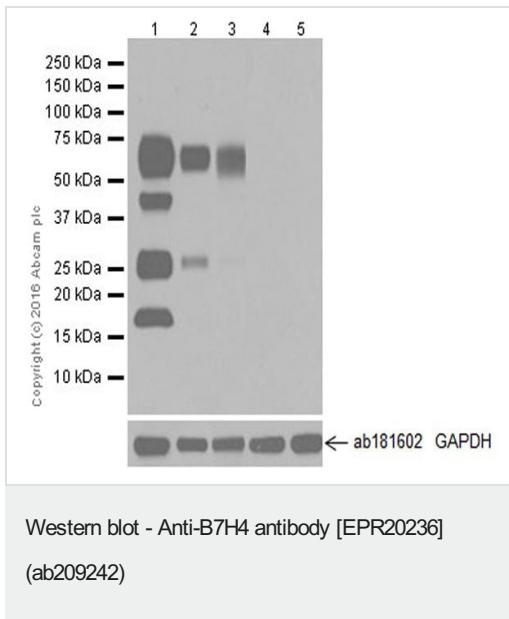
Perform heat mediated antigen retrieval with citrate buffer pH 6 before commencing with IHC staining protocol.



Immunofluorescent analysis of 100% methanol-fixed SK-BR-3 (Human mammary gland adenocarcinoma cell line) cells labeling B7H4 with ab209242 at 1/250 dilution, followed by Goat anti-rabbit IgG (Alexa Fluor® 488) ([ab150077](#)) secondary antibody at 1/1000 dilution (green). Confocal image showing membranous staining on SK-BR-3 cell line.

The nuclear counter stain is DAPI (blue). Tubulin is detected with [ab195889](#) (Anti-alpha Tubulin antibody [DM1A] - Microtubule Marker (Alexa Fluor® 594)) at 1/200 dilution (red).

Secondary antibody only control: Used PBS instead of primary antibody, secondary antibody is Goat anti-rabbit IgG (Alexa Fluor® 488) ([ab150077](#)) at 1/1000 dilution.



All lanes : Anti-B7H4 antibody [EPR20236] (ab209242) at 1/1000 dilution

Lane 1 : SK-BR-3 (Human mammary gland adenocarcinoma cell line) whole cell lysate

Lane 2 : T-47D (Human ductal breast epithelial tumor cell line) whole cell lysate

Lane 3 : Human breast cancer lysate

Lane 4 : HT-29 (Human colorectal adenocarcinoma cell line) whole cell lysate

Lane 5 : HeLa (Human epithelial cell line from cervix adenocarcinoma) whole cell lysate

Lysates/proteins at 20 µg per lane.

Secondary

All lanes : Goat Anti-Rabbit IgG H&L (HRP) (**ab97051**) at 1/100000 dilution

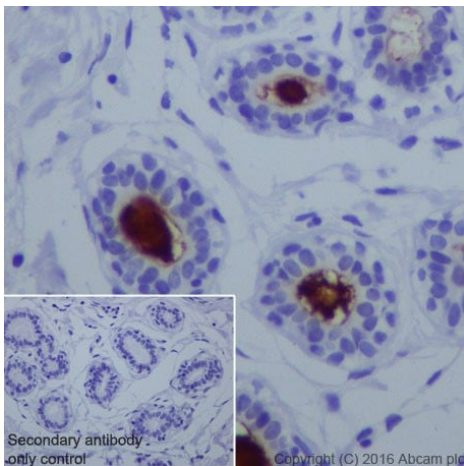
Predicted band size: 31 kDa

Observed band size: 18,28,45,65 kDa

Exposure time: 30 seconds

Blocking/Dilution buffer: 5% NFDM/TBST.

B7H4 is N-glycosylated protein. The level of B7H4 glycosylation varies between different cells and tissues. The bands at 65kDa and 45kDa represent glycosylated B7H4. The bands at 28kDa and 18kDa represent de-glycosylated B7H4. HT-29 and HeLa cell lines are negative controls. (PMID: 15878339).

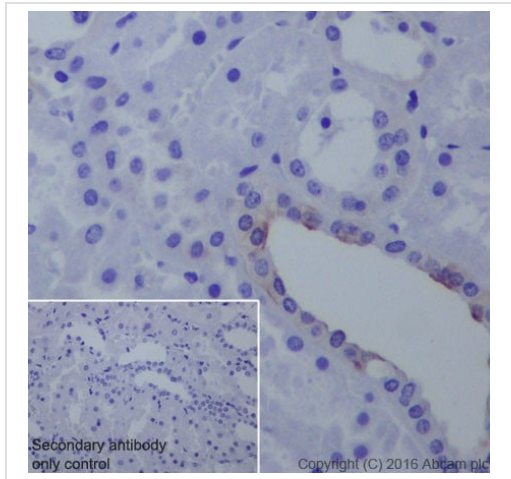


Immunohistochemistry (Formalin/PFA-fixed paraffin-embedded sections) - Anti-B7H4 antibody [EPR20236] (ab209242)

Immunohistochemical analysis of paraffin-embedded human breast tissue labeling B7H4 with ab209242 at 1/1000 dilution, followed by Goat Anti-Rabbit IgG H&L (HRP) ready to use. Predominantly apical, luminal membranous staining on human breast epithelium is observed [PMID: 15756008]. Counter stained with Hematoxylin.

Secondary antibody only control: Used PBS instead of primary antibody, secondary antibody is Goat Anti-Rabbit IgG H&L (HRP) ready to use.

Perform heat mediated antigen retrieval with citrate buffer pH 6 before commencing with IHC staining protocol.



Immunohistochemistry (Formalin/PFA-fixed paraffin-embedded sections) - Anti-B7H4 antibody [EPR20236] (ab209242)

Immunohistochemical analysis of paraffin-embedded human kidney tissue labeling B7H4 with ab209242 at 1/1000 dilution, followed by Goat Anti-Rabbit IgG H&L (HRP) ready to use. Membranous staining on distal convoluted renal tubules of human kidney is observed [PMID: 16798883]. Counter stained with Hematoxylin.

Secondary antibody only control: Used PBS instead of primary antibody, secondary antibody is Goat Anti-Rabbit IgG H&L (HRP) ready to use.

Perform heat mediated antigen retrieval with citrate buffer pH 6 before commencing with IHC staining protocol.

Tissue Microarray (TMA) data for ab209242					
Normal tissue samples			Malignant tissue samples		
Human cardiac muscle	x	Human placenta	x	Clear cell carcinoma of human kidney	x
Human cerebrum	x	Human skeletal muscle	x	Human bladder cancer	x
Human colon	x	Human skin	x	Human breast carcinoma	✓
Human endometrium	x	Human spleen	x	Human cervical carcinoma	x
Human kidney	✓	Human stomach	x	Human colon carcinoma	x
Human liver	x	Human testis	x	Human endometrial carcinoma	x
Human lung	x	Human thyroid	x	Human gastric adenocarcinoma	x
Human mammary gland	✓	Human tonsil	x		
Human pancreas (islet cells)	✓				
				Human glioma	x
				Human hepatocellular carcinoma	✓
				Human lung carcinoma	✓
				Human ovarian carcinoma	✓
				Human pancreatic carcinoma	✓
				Human prostatic hyperplasia	x
				Human thyroid carcinoma	x

Immunohistochemistry (Formalin/PFA-fixed paraffin-embedded sections) - Anti-B7H4 antibody [EPR20236] (ab209242)

Tissue Microarrays stained for "Anti-B7H4 antibody [EPR20236]" using "ab209242" in immunohistochemical analysis. This table provides a detailed overview of positive (tick mark) and negative (cross mark) staining per sample type tested. The sections were pre-treated using Heat mediated antigen retrieval using **ab93678** (citrate buffer, pH 6.0). The sections were incubated with ab209242 at +4°C overnight followed by a ready to use Goat Anti-Rabbit IgG H&L (HRP polymer).

Why choose a recombinant antibody?



Research with confidence
Consistent and reproducible results



Long-term and scalable supply
Recombinant technology



Success from the first experiment
Confirmed specificity



Ethical standards compliant
Animal-free production

Anti-B7H4 antibody [EPR20236] (ab209242)

Please note: All products are "FOR RESEARCH USE ONLY. NOT FOR USE IN DIAGNOSTIC PROCEDURES"

Our Abpromise to you: Quality guaranteed and expert technical support

- Replacement or refund for products not performing as stated on the datasheet
- Valid for 12 months from date of delivery
- Response to your inquiry within 24 hours
- We provide support in Chinese, English, French, German, Japanese and Spanish
- Extensive multi-media technical resources to help you
- We investigate all quality concerns to ensure our products perform to the highest standards

If the product does not perform as described on this datasheet, we will offer a refund or replacement. For full details of the Abpromise, please visit <https://www.abcam.cn/abpromise> or contact our technical team.

Terms and conditions

- Guarantee only valid for products bought direct from Abcam or one of our authorized distributors