


Anti-Aurora B antibody [mAbcam 3609] ab3609

★★★★★ [5 Abreviews](#) [27 References](#) [2 图像](#)

概述

| | |
|-------|---|
| 产品名称 | Anti-Aurora B抗体[mAbcam 3609] |
| 描述 | 小鼠单克隆抗体[mAbcam 3609] to Aurora B |
| 宿主 | Mouse |
| 特异性 | Based on the immunogen sequence, we do not expect the antibody to cross-react with AURKA or AURKC. No cross-reactivity testing has been performed. |
| 经测试应用 | 适用于: WB, IHC-P 不适用于: ICC/IF |
| 种属反应性 | 与反应: Human 预测可用于: Mouse, Rat  |
| 免疫原 | Synthetic peptide. This information is proprietary to Abcam and/or its suppliers. |
| 阳性对照 | Hela whole cell lysate |
| 常规说明 | <p>This antibody clone is manufactured by Abcam. If you require a custom buffer formulation or conjugation for your experiments, please contact orders@abcam.com.</p> <p>The Life Science industry has been in the grips of a reproducibility crisis for a number of years. Abcam is leading the way in addressing this with our range of recombinant monoclonal antibodies and knockout edited cell lines for gold-standard validation. Please check that this product meets your needs before purchasing.</p> <p>If you have any questions, special requirements or concerns, please send us an inquiry and/or contact our Support team ahead of purchase. Recommended alternatives for this product can be found below, along with publications, customer reviews and Q&As</p> |

性能

| | |
|------|--|
| 形式 | Liquid |
| 存放说明 | Shipped at 4°C. Store at +4°C short term (1-2 weeks). Upon delivery aliquot. Store at -20°C or -80°C. Avoid freeze / thaw cycle. |
| 存储溶液 | Preservative: 0.05% Sodium azide Constituent: PBS |
| 纯度 | Protein G purified |
| 克隆 | 单克隆 |

| | |
|------|-------------|
| 克隆编号 | mAbcam 3609 |
| 同种型 | IgG1 |
| 轻链类型 | kappa |

应用

The Abpromise guarantee **Abpromise™承诺保证使用ab3609于以下的经测试应用**

“应用说明”部分下显示的仅为推荐的起始稀释度;实际最佳的稀释度/浓度应由使用者检定。

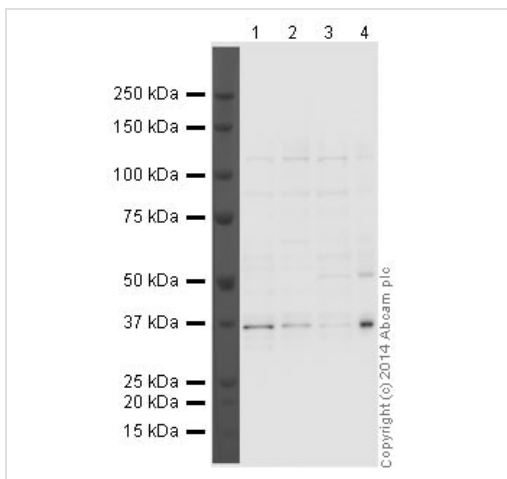
| 应用 | Ab评论 | 说明 |
|-------|-----------|--|
| WB | ★★★★★ (1) | Use a concentration of 1 µg/ml. Detects a band of approximately 39 kDa (predicted molecular weight: 39 kDa). Block with 1% BSA for 1 hour. |
| IHC-P | | Use at an assay dependent concentration. |

应用说明 Is unsuitable for ICC/IF.

靶标

| | |
|--------------|--|
| 功能 | May be directly involved in regulating the cleavage of polar spindle microtubules and is a key regulator for the onset of cytokinesis during mitosis. Component of the chromosomal passenger complex (CPC), a complex that acts as a key regulator of mitosis. The CPC complex has essential functions at the centromere in ensuring correct chromosome alignment and segregation and is required for chromatin-induced microtubule stabilization and spindle assembly. Phosphorylates 'Ser-10' and 'Ser-28' of histone H3 during mitosis. Required for kinetochore localization of BUB1 and SGOL1. Interacts with INCENP. |
| 组织特异性 | High level expression seen in the thymus. It is also expressed in the spleen, lung, testis, colon, placenta and fetal liver. Expressed during S and G2/M phase and expression is up-regulated in cancer cells during M phase. |
| 疾病相关 | Note=Disruptive regulation of expression is a possible mechanism of the perturbation of chromosomal integrity in cancer cells through its dominant-negative effect on cytokinesis. |
| 序列相似性 | Belongs to the protein kinase superfamily. Ser/Thr protein kinase family. Aurora subfamily. Contains 1 protein kinase domain. |
| 翻译后修饰 | Ubiquitinated by different BCR (BTB-CUL3-RBX1) E3 ubiquitin ligase complexes. Ubiquitinated by the BCR(KLHL9-KLHL13) E3 ubiquitin ligase complex, ubiquitination leads to removal from mitotic chromosomes and is required for cytokinesis. During anaphase, the BCR(KLHL21) E3 ubiquitin ligase complex recruits the CPC complex from chromosomes to the spindle midzone and mediates the ubiquitination of AURKB. Ubiquitination of AURKB by BCR(KLHL21) E3 ubiquitin ligase complex may not lead to its degradation by the proteasome. |
| 细胞定位 | Nucleus. Chromosome. Chromosome > centromere. Cytoplasm > cytoskeleton > spindle. Localizes on chromosome arms and inner centromeres from prophase through metaphase and then transferring to the spindle midzone and midbody from anaphase through cytokinesis. Colocalized with gamma tubulin in the mid-body. |

图片



Western blot - Anti-Aurora B antibody [mAbcam 3609] (ab3609)

All lanes : Anti-Aurora B antibody [mAbcam 3609] (ab3609) at 1 µg/ml

Lane 1 : Hek293 Whole Cell Lysate

Lane 2 : Jurkat Whole Cell Lysate

Lane 3 : HeLa Whole Cell Lysate

Lane 4 : HeLa Whole Cell Lysate- Nocodazole Stimulated

Lysates/proteins at 20 µg per lane.

Secondary

All lanes : Goat polyclonal to Mouse IgG - H&L - Pre-Absorbed (HRP) at 1/3000 dilution

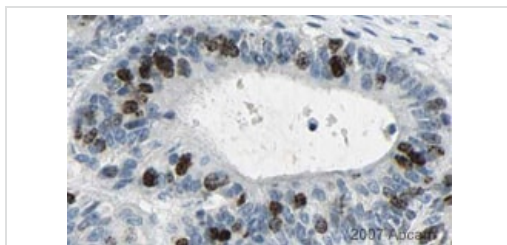
Developed using the ECL technique.

Performed under reducing conditions.

Predicted band size: 39 kDa

Observed band size: 37 kDa

Exposure time: 3 minutes



Immunohistochemistry (Formalin/PFA-fixed paraffin-embedded sections) - Anti-Aurora B antibody [mAbcam 3609] (ab3609)
Image courtesy of Human Protein Atlas

Image courtesy of **Human Protein Atlas**

Paraffin embedded human liver tumor tissue was incubated with ab3609 (1/35 dilution) for 30 mins at room temperature. Antigen retrieval was performed by heat induction in citrate buffer pH 6.

ab3609 was tested in a tissue microarray (TMA) containing a wide range of normal and cancer tissues as well as a cell microarray consisting of a range of commonly used, well characterised human cell lines. Further images can be found at www.proteinatlas.org

Please note: All products are "FOR RESEARCH USE ONLY. NOT FOR USE IN DIAGNOSTIC PROCEDURES"

Our Promise to you: Quality guaranteed and expert technical support

- Replacement or refund for products not performing as stated on the datasheet
- Valid for 12 months from date of delivery
- Response to your inquiry within 24 hours

- We provide support in Chinese, English, French, German, Japanese and Spanish
- Extensive multi-media technical resources to help you
- We investigate all quality concerns to ensure our products perform to the highest standards

If the product does not perform as described on this datasheet, we will offer a refund or replacement. For full details of the Abpromise, please visit <https://www.abcam.cn/abpromise> or contact our technical team.

Terms and conditions

- Guarantee only valid for products bought direct from Abcam or one of our authorized distributors