


### Anti-ATPB antibody [EPR11990] ab170947

**重组** RabMAb

[1 Abreviews](#) [9 References](#) [9 图像](#)

#### 概述

产品名称	Anti-ATPB抗体[EPR11990]
描述	兔单克隆抗体[EPR11990] to ATPB
宿主	Rabbit
经测试应用	<b>适用于:</b> WB, IHC-P, ICC/IF, IP <b>不适用于:</b> Flow Cyt
种属反应性	<b>与反应:</b> Human <b>预测可用于:</b> Mouse, Rat 
免疫原	Synthetic peptide within Human ATPB aa 150-250 (Cysteine residue). The exact sequence is proprietary. Database link: <a href="#">P06576</a>
阳性对照	HepG2; 293T; HeLa and HT-29 cell lysates; Human heart and liver tissues; HeLa cells
常规说明	This product is a recombinant monoclonal antibody, which offers several advantages including: <ul style="list-style-type: none"> <li>- High batch-to-batch consistency and reproducibility</li> <li>- Improved sensitivity and specificity</li> <li>- Long-term security of supply</li> <li>- Animal-free production</li> </ul> For more information <a href="#">see here</a> . Our RabMAb <sup>®</sup> technology is a patented hybridoma-based technology for making rabbit monoclonal antibodies. For details on our patents, please refer to <a href="#">RabMAb<sup>®</sup> patents</a> .

#### 性能

形式	Liquid
存放说明	Shipped at 4°C. Store at +4°C short term (1-2 weeks). Upon delivery aliquot. Store at -20°C long term. Avoid freeze / thaw cycle.
存储溶液	pH: 7.20 Preservative: 0.01% Sodium azide Constituents: 9% PBS, 40% Glycerol (glycerin, glycerine), 0.05% BSA, 50% Tissue culture supernatant
纯度	Tissue culture supernatant

克隆	单克隆
克隆编号	EPR11990
同种型	IgG

## 应用

**The Abpromise guarantee**      **Abpromise™承诺保证使用ab170947于以下的经测试应用**

**“应用说明”部分 下显示的仅为推荐的起始稀释度;实际最佳的稀释度/浓度应由使用者检定。**

应用	Ab评论	说明
WB		1/10000 - 1/50000. Predicted molecular weight: 56 kDa.
IHC-P		1/100 - 1/250. Perform heat mediated antigen retrieval with citrate buffer pH 6 before commencing with IHC staining protocol. Antigen retrieval is recommended.
ICC/IF		1/500. <b>For unpurified use at 1/50 - 1/100.</b>
IP		1/10 - 1/100.

**应用说明** Is unsuitable for Flow Cyt.

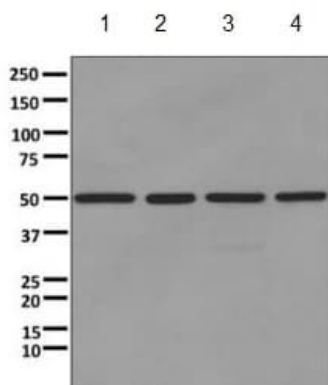
## 靶标

**功能** Mitochondrial membrane ATP synthase (F(1)F(0) ATP synthase or Complex V) produces ATP from ADP in the presence of a proton gradient across the membrane which is generated by electron transport complexes of the respiratory chain. F-type ATPases consist of two structural domains, F(1) - containing the extramembraneous catalytic core, and F(0) - containing the membrane proton channel, linked together by a central stalk and a peripheral stalk. During catalysis, ATP synthesis in the catalytic domain of F(1) is coupled via a rotary mechanism of the central stalk subunits to proton translocation. Subunits alpha and beta form the catalytic core in F(1). Rotation of the central stalk against the surrounding alpha(3)beta(3) subunits leads to hydrolysis of ATP in three separate catalytic sites on the beta subunits.

**序列相似性** Belongs to the ATPase alpha/beta chains family.

**细胞定位** Mitochondrion. Mitochondrion inner membrane. Peripheral membrane protein.

图片



Western blot - Anti-ATPB antibody [EPR11990]  
(ab170947)

**All lanes :** Anti-ATPB antibody [EPR11990] (ab170947) at 1/10000 dilution

**Lane 1 :** HepG2 cell lysate

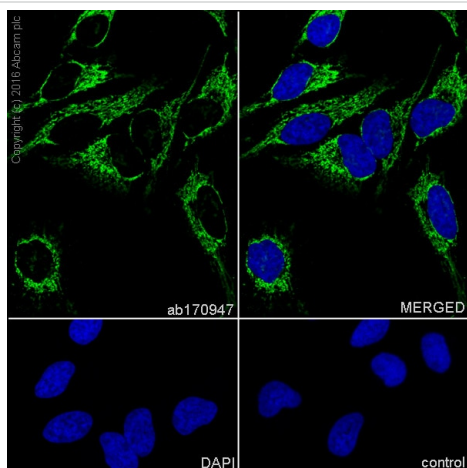
**Lane 2 :** 293T cell lysate

**Lane 3 :** HeLa cell lysate

**Lane 4 :** HT29 cell lysate

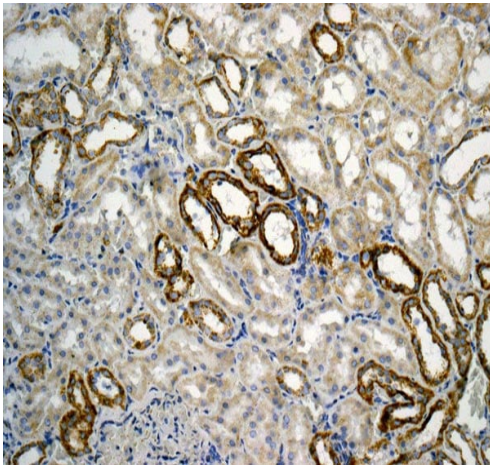
Lysates/proteins at 10 µg per lane.

**Predicted band size:** 56 kDa



Immunocytochemistry/ Immunofluorescence - Anti-ATPB antibody [EPR11990] (ab170947)

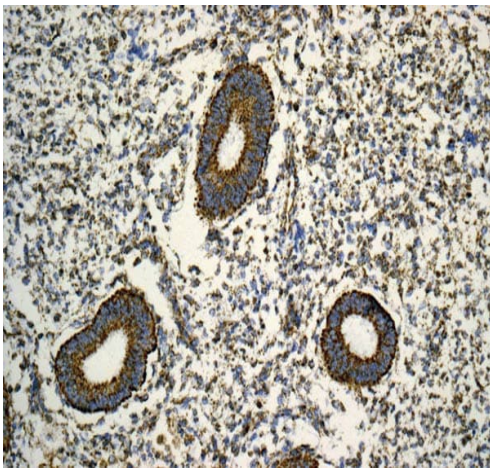
Immunocytochemistry/Immunofluorescence analysis of HeLa (Human epithelial cell line from cervix adenocarcinoma) labeling ATPB with purified ab170947 at 1/500 dilution. Cells were fixed with 100% methanol. **ab150077** Goat anti rabbit IgG (Alexa Fluor® 488) at 1/1000 was used as the secondary antibody. Nuclei were counterstained with DAPI. PBS was used instead of the primary antibody as the negative control.



Immunohistochemistry (Formalin/PFA-fixed paraffin-embedded sections) - Anti-ATPB antibody  
[EPR11990] (ab170947)

ab170947 showing +ve staining in Human normal kidney tissue.

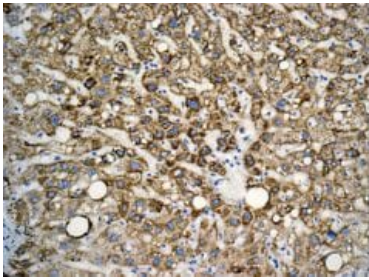
Perform heat mediated antigen retrieval with citrate buffer pH 6 before commencing with IHC staining protocol.



Immunohistochemistry (Formalin/PFA-fixed paraffin-embedded sections) - Anti-ATPB antibody  
[EPR11990] (ab170947)

ab170947 showing +ve staining in Human normal uterus tissue.

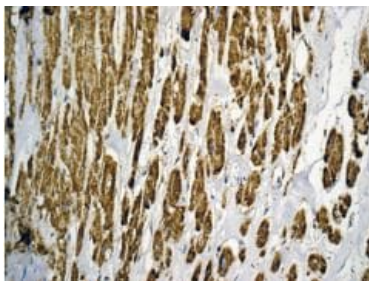
Perform heat mediated antigen retrieval with citrate buffer pH 6 before commencing with IHC staining protocol.



Immunohistochemistry (Formalin/PFA-fixed paraffin-embedded sections) - Anti-ATPB antibody [EPR11990] (ab170947)

Immunohistochemical analysis of paraffin-embedded Human liver tissue labeling ATPB with ab170947 at 1/100 dilution.

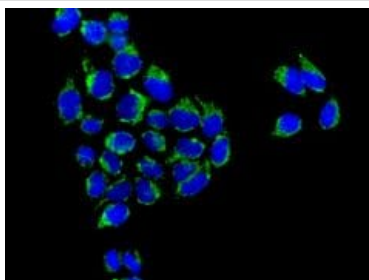
Perform heat mediated antigen retrieval with citrate buffer pH 6 before commencing with IHC staining protocol.



Immunohistochemistry (Formalin/PFA-fixed paraffin-embedded sections) - Anti-ATPB antibody [EPR11990] (ab170947)

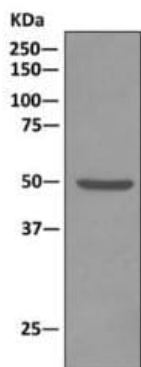
Immunohistochemical analysis of paraffin-embedded Human heart tissue labeling ATPB with ab170947 at 1/100 dilution.

Perform heat mediated antigen retrieval with citrate buffer pH 6 before commencing with IHC staining protocol.



Immunocytochemistry/ Immunofluorescence - Anti-ATPB antibody [EPR11990] (ab170947)

Immunofluorescent analysis of HeLa cells labeling ATPB using ab170947 at 1/50 dilution (green). DAPI nuclear staining (blue).



Anti-ATPB antibody [EPR11990] (ab170947) at 1/10 dilution +  
HepG2 cell lysate

### Secondary

HRP-conjugated anti-rabbit IgG preferentially detecting the non-reduced form of rabbit IgG.

Immunoprecipitation - Anti-ATPB antibody  
[EPR11990] (ab170947)

Why choose a  
recombinant antibody?



**Research with  
confidence**  
Consistent and  
reproducible results



**Long-term and  
scalable supply**  
Recombinant  
technology



**Success from the  
first experiment**  
Confirmed  
specificity



**Ethical standards  
compliant**  
Animal-free  
production

Anti-ATPB antibody [EPR11990] (ab170947)

**Please note:** All products are "FOR RESEARCH USE ONLY. NOT FOR USE IN DIAGNOSTIC PROCEDURES"

### Our Abpromise to you: Quality guaranteed and expert technical support

- Replacement or refund for products not performing as stated on the datasheet
- Valid for 12 months from date of delivery
- Response to your inquiry within 24 hours
- We provide support in Chinese, English, French, German, Japanese and Spanish
- Extensive multi-media technical resources to help you

- We investigate all quality concerns to ensure our products perform to the highest standards

If the product does not perform as described on this datasheet, we will offer a refund or replacement. For full details of the Abpromise, please visit <https://www.abcam.cn/abpromise> or contact our technical team.

#### **Terms and conditions**

---

- Guarantee only valid for products bought direct from Abcam or one of our authorized distributors