

Anti-ATP6J/ATP6V1G1 antibody ab220044

[1 References](#) [2 图像](#)

概述

产品名称	Anti-ATP6J/ATP6V1G1抗体
描述	兔多克隆抗体to ATP6J/ATP6V1G1
宿主	Rabbit
经测试应用	适用于: ICC/IF, WB
种属反应性	与反应: Human 预测可用于: Mouse, Rat, Cow 
免疫原	Recombinant fragment corresponding to Human ATP6J/ATP6V1G1 aa 1 to the C-terminus. Database link: O75348 Run BLAST with Run BLAST with
阳性对照	RT-4 and U-251 MG cell lysates; Human liver lysate; PC-3 cells.
常规说明	<p>The Life Science industry has been in the grips of a reproducibility crisis for a number of years. Abcam is leading the way in addressing this with our range of recombinant monoclonal antibodies and knockout edited cell lines for gold-standard validation. Please check that this product meets your needs before purchasing.</p> <p>If you have any questions, special requirements or concerns, please send us an inquiry and/or contact our Support team ahead of purchase. Recommended alternatives for this product can be found below, along with publications, customer reviews and Q&As</p>

性能

形式	Liquid
存放说明	Shipped at 4°C. Store at +4°C short term (1-2 weeks). Upon delivery aliquot. Store at -20°C long term. Avoid freeze / thaw cycle.
存储溶液	pH: 7.20 Preservative: 0.02% Sodium azide Constituents: 59% PBS, 40% Glycerol (glycerin, glycerine)
纯度	Immunogen affinity purified
克隆	多克隆
同种型	IgG

应用

The Abpromise guarantee

Abpromise™ 承诺保证使用 ab220044 于以下的经测试应用

“应用说明”部分 下显示的仅为推荐的起始稀释度;实际最佳的稀释度/浓度应由使用者检定。

应用	Ab评论	说明
ICC/IF		Use a concentration of 0.25 - 2 µg/ml.
WB		Use a concentration of 0.04 - 0.4 µg/ml. Predicted molecular weight: 14 kDa.

靶标

功能

Catalytic subunit of the peripheral V1 complex of vacuolar ATPase (V-ATPase). V-ATPase is responsible for acidifying a variety of intracellular compartments in eukaryotic cells.

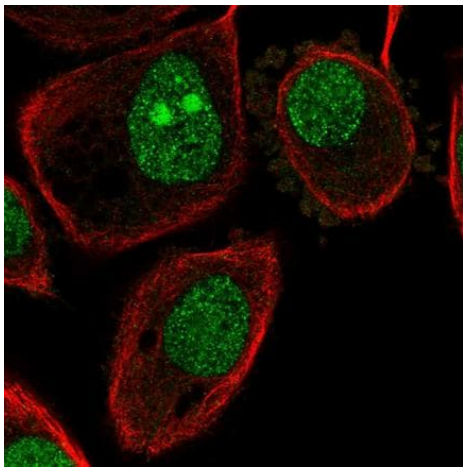
组织特异性

Ubiquitous.

序列相似性

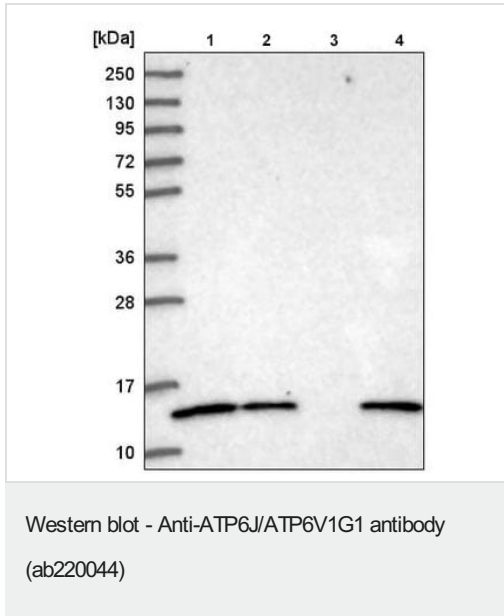
Belongs to the V-ATPase G subunit family.

图片



Immunofluorescent analysis of PFA-fixed, Triton X-100 permeabilized PC-3 cells labeling ATP6J/ATP6V1G1 with ab220044 at 4 µg/ml (green).

Immunocytochemistry/ Immunofluorescence - Anti-ATP6J/ATP6V1G1 antibody (ab220044)



All lanes : Anti-ATP6J/ATP6V1G1 antibody (ab220044) at 1/100 dilution

Lane 1 : RT-4 cell lysate

Lane 2 : U-251 MG cell lysate

Lane 3 : Human plasma

Lane 4 : Human liver lysate

Predicted band size: 14 kDa

Please note: All products are "FOR RESEARCH USE ONLY. NOT FOR USE IN DIAGNOSTIC PROCEDURES"

Our Abpromise to you: Quality guaranteed and expert technical support

- Replacement or refund for products not performing as stated on the datasheet
- Valid for 12 months from date of delivery
- Response to your inquiry within 24 hours
- We provide support in Chinese, English, French, German, Japanese and Spanish
- Extensive multi-media technical resources to help you
- We investigate all quality concerns to ensure our products perform to the highest standards

If the product does not perform as described on this datasheet, we will offer a refund or replacement. For full details of the Abpromise, please visit <https://www.abcam.cn/abpromise> or contact our technical team.

Terms and conditions

- Guarantee only valid for products bought direct from Abcam or one of our authorized distributors