


# Anti-ATP-binding cassette sub-family A member 3 antibody ab99856

★★★★★ [2 Abreviews](#) [2 References](#) [1 图像](#)

### 概述

产品名称	Anti-ATP-binding cassette sub-family A member 3抗体
描述	兔多克隆抗体到 ATP-binding cassette sub-family A member 3
宿主	Rabbit
经测试应用	适用于: WB, ICC/IF
种属反应性	与反应: Human 预测可用于: Mouse, Rat 
免疫原	Recombinant fragment corresponding to Human ATP-binding cassette sub-family A member 3 aa 1 to the C-terminus. BC062779.1 Database link: <a href="#">Q99758-2</a>
常规说明	<p>The Life Science industry has been in the grips of a reproducibility crisis for a number of years. Abcam is leading the way in addressing this with our range of recombinant monoclonal antibodies and knockout edited cell lines for gold-standard validation. Please check that this product meets your needs before purchasing.</p> <p>If you have any questions, special requirements or concerns, please send us an inquiry and/or contact our Support team ahead of purchase. Recommended alternatives for this product can be found below, along with publications, customer reviews and Q&amp;As</p>

### 性能

形式	Liquid
存放说明	Shipped at 4°C. Store at +4°C short term (1-2 weeks). Upon delivery aliquot. Store at -20°C. Avoid freeze / thaw cycle.
存储溶液	pH: 7.20 Preservative: 0.02% Sodium azide Constituent: PBS
纯度	Protein A purified
克隆	多克隆
同种型	IgG

## 应用

**The Abpromise guarantee**      **Abpromise™** 承诺保证使用 ab99856 于以下的经测试应用

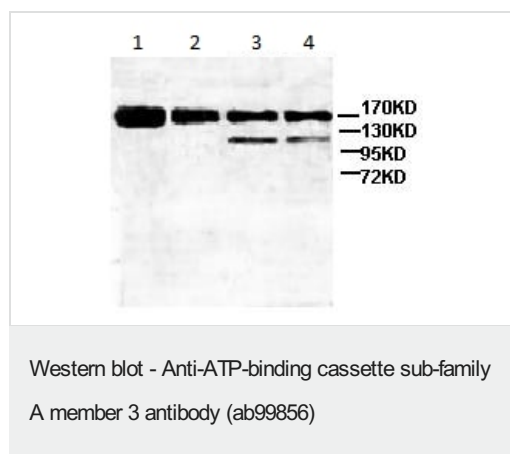
“应用说明”部分 下显示的仅为推荐的起始稀释度;实际最佳的稀释度/浓度应由使用者检定。

应用	Ab评论	说明
WB		1/1000 - 1/2000. Predicted molecular weight: 191 kDa.
ICC/IF	★★★★★ (1)	Use at an assay dependent concentration.

## 靶标

<b>功能</b>	Plays an important role in the formation of pulmonary surfactant, probably by transporting lipids such as cholesterol.
<b>组织特异性</b>	Highly expressed in lung, followed by brain, pancreas, skeletal muscle and heart. Weakly expressed in placenta, kidney and liver. Also expressed in medullary thyroid carcinoma cells (MTC) and in C-cell carcinoma.
<b>疾病相关</b>	Defects in ABCA3 are the cause of pulmonary surfactant metabolism dysfunction type 3 (SMDP3) [MIM:610921]; also called pulmonary alveolar proteinosis due to ABCA3 deficiency. A rare lung disorder due to impaired surfactant homeostasis. It is characterized by alveolar filling with floccular material that stains positive using the periodic acid-Schiff method and is derived from surfactant phospholipids and protein components. Excessive lipoproteins accumulation in the alveoli results in severe respiratory distress.
<b>序列相似性</b>	Belongs to the ABC transporter superfamily. ABCA family. Contains 2 ABC transporter domains.
<b>结构域</b>	Multifunctional polypeptide with two homologous halves, each containing an hydrophobic membrane-anchoring domain and an ATP binding cassette (ABC) domain.
<b>细胞定位</b>	Membrane.

## 图片



**All lanes :** Anti-ATP-binding cassette sub-family A member 3 antibody (ab99856) at 1/1000 dilution

**Lane 1 :** SW480 cell lysate

**Lane 2 :** Hela cell lysate

**Lane 3 :** Human fetal kidney lysate

**Lane 4 :** Human fetal lung lysate

**Predicted band size:** 191 kDa

**Please note:** All products are "FOR RESEARCH USE ONLY. NOT FOR USE IN DIAGNOSTIC PROCEDURES"

## **Our Abpromise to you: Quality guaranteed and expert technical support**

---

- Replacement or refund for products not performing as stated on the datasheet
- Valid for 12 months from date of delivery
- Response to your inquiry within 24 hours
  
- We provide support in Chinese, English, French, German, Japanese and Spanish
- Extensive multi-media technical resources to help you
- We investigate all quality concerns to ensure our products perform to the highest standards

If the product does not perform as described on this datasheet, we will offer a refund or replacement. For full details of the Abpromise, please visit <https://www.abcam.cn/abpromise> or contact our technical team.

## **Terms and conditions**

---

- Guarantee only valid for products bought direct from Abcam or one of our authorized distributors