

Anti-ATM antibody [Y170] ab32420

敲除验证
重组
RabMAb

★★★★★
[8 Abreviews](#)
[118 References](#)
[12 图像](#)

概述

产品名称	Anti-ATM抗体[Y170]
描述	兔单克隆抗体[Y170] to ATM
宿主	Rabbit
经测试应用	适用于: Flow Cyt (Intra), WB, IHC-P, ICC/IF 不适用于: IP
种属反应性	与反应: Human
免疫原	Synthetic peptide. This information is proprietary to Abcam and/or its suppliers.
阳性对照	WB: 293 cell lysate. Flow Cyt (intra): HeLa cells ICC/IF: HeLa and HepG2 cells
常规说明	<p>This product is a recombinant monoclonal antibody, which offers several advantages including:</p> <ul style="list-style-type: none"> - High batch-to-batch consistency and reproducibility - Improved sensitivity and specificity - Long-term security of supply - Animal-free production <p>For more information see here.</p> <p>Mouse, Rat: We have preliminary internal testing data to indicate this antibody may not react with these species. Please contact us for more information.</p>

性能

形式	Liquid
存放说明	Shipped at 4°C. Store at +4°C short term (1-2 weeks). Upon delivery aliquot. Store at -20°C. Avoid freeze / thaw cycle.
存储溶液	pH: 7.20 Preservative: 0.01% Sodium azide Constituents: 59% PBS, 40% Glycerol, 0.05% BSA
纯度	Protein A purified
克隆	单克隆
克隆编号	Y170
同种型	IgG

应用

The Abpromise guarantee

Abpromise™ 承诺保证使用ab32420于以下的经测试应用

“应用说明”部分 下显示的仅为推荐的起始稀释度;实际最佳的稀释度/浓度应由使用者检定。

应用	Ab评论	说明
Flow Cyt (Intra)		1/20.
WB	★★★★★ (5)	1/1000 - 1/10000. Predicted molecular weight: 350 kDa.
IHC-P	★★★★★ (3)	1/100. Perform heat mediated antigen retrieval with Tris/EDTA buffer pH 9.0 before commencing with IHC staining protocol.
ICC/IF		1/250 - 1/500.

应用说明

Is unsuitable for IP.

靶标

功能

Serine/threonine protein kinase which activates checkpoint signaling upon double strand breaks (DSBs), apoptosis and genotoxic stresses such as ionizing ultraviolet A light (UVA), thereby acting as a DNA damage sensor. Recognizes the substrate consensus sequence [ST]-Q. Phosphorylates 'Ser-139' of histone variant H2AX/H2AFX at double strand breaks (DSBs), thereby regulating DNA damage response mechanism. Also plays a role in pre-B cell allelic exclusion, a process leading to expression of a single immunoglobulin heavy chain allele to enforce clonality and monospecific recognition by the B-cell antigen receptor (BCR) expressed on individual B lymphocytes. After the introduction of DNA breaks by the RAG complex on one immunoglobulin allele, acts by mediating a repositioning of the second allele to pericentromeric heterochromatin, preventing accessibility to the RAG complex and recombination of the second allele. Also involved in signal transduction and cell cycle control. May function as a tumor suppressor. Necessary for activation of ABL1 and SAPK. Phosphorylates p53/TP53, FANCD2, NFKBIA, BRCA1, CTIP, nibrin (NBN), TERF1, RAD9 and DCLRE1C. May play a role in vesicle and/or protein transport. Could play a role in T-cell development, gonad and neurological function. Plays a role in replication-dependent histone mRNA degradation. Binds DNA ends.

组织特异性

Found in pancreas, kidney, skeletal muscle, liver, lung, placenta, brain, heart, spleen, thymus, testis, ovary, small intestine, colon and leukocytes.

疾病相关

Defects in ATM are the cause of ataxia telangiectasia (AT) [MIM:208900]; also known as Louis-Bar syndrome, which includes four complementation groups: A, C, D and E. This rare recessive disorder is characterized by progressive cerebellar ataxia, dilation of the blood vessels in the conjunctiva and eyeballs, immunodeficiency, growth retardation and sexual immaturity. AT patients have a strong predisposition to cancer; about 30% of patients develop tumors, particularly lymphomas and leukemias. Cells from affected individuals are highly sensitive to damage by ionizing radiation and resistant to inhibition of DNA synthesis following irradiation. Note=Defects in ATM contribute to T-cell acute lymphoblastic leukemia (TALL) and T-prolymphocytic leukemia (TPLL). TPLL is characterized by a high white blood cell count, with a predominance of prolymphocytes, marked splenomegaly, lymphadenopathy, skin lesions and serous effusion. The clinical course is highly aggressive, with poor response to chemotherapy and short survival time. TPLL occurs both in adults as a sporadic disease and in younger AT patients.

Note=Defects in ATM contribute to B-cell non-Hodgkin lymphomas (BNHL), including mantle cell lymphoma (MCL).

Note=Defects in ATM contribute to B-cell chronic lymphocytic leukemia (BCLL). BCLL is the commonest form of leukemia in the elderly. It is characterized by the accumulation of mature CD5+ B lymphocytes, lymphadenopathy, immunodeficiency and bone marrow failure.

序列相似性

Belongs to the PI3/PI4-kinase family. ATM subfamily.

Contains 1 FAT domain.

Contains 1 FATC domain.

Contains 1 PI3K/PI4K domain.

结构域

The FATC domain is required for interaction with KAT5.

翻译后修饰

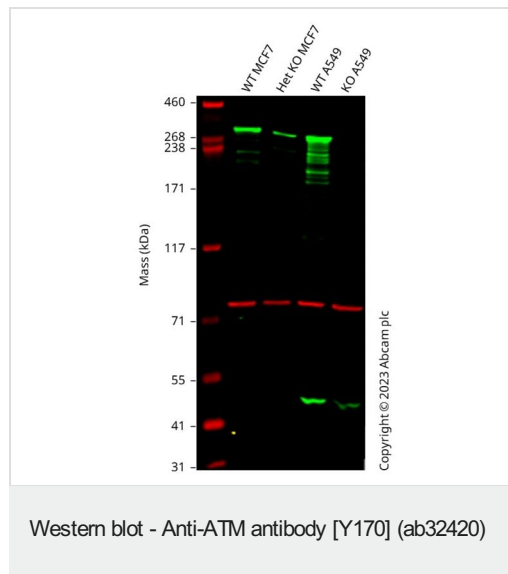
Phosphorylated by NUA1/ARK5. Autophosphorylation on Ser-367, Ser-1893, Ser-1981 correlates with DNA damage-mediated activation of the kinase.

Acetylation, on DNA damage, is required for activation of the kinase activity, dimer-monomer transition, and subsequent autophosphorylation on Ser-1981. Acetylated in vitro by KAT5/TIP60.

细胞定位

Nucleus. Cytoplasmic vesicle. Primarily nuclear. Found also in endocytic vesicles in association with beta-adaptin.

图片



All lanes : Anti-ATM antibody [Y170] (ab32420) at 1/1000 dilution

Lane 1 : Wild-type MCF7 cell lysate

Lane 2 : ATM knockout MCF7 cell lysate

Lane 3 : Wild-type A549 cell lysate

Lane 4 : ATM knockout A549 [ab283811](#) cell lysate

Lysates/proteins at 20 µg per lane.

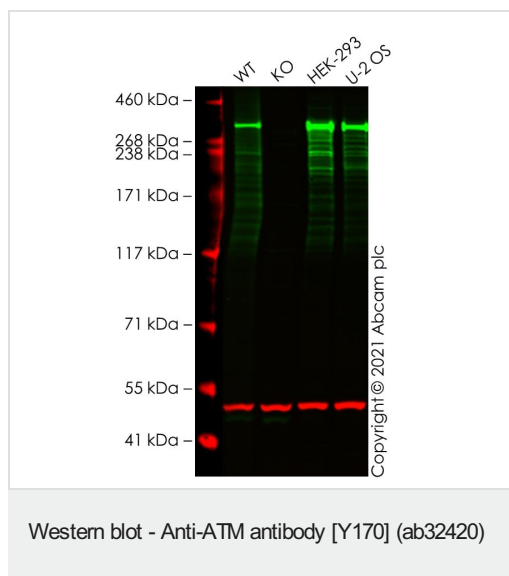
Performed under reducing conditions.

Predicted band size: 350 kDa

Observed band size: 350 kDa

Western blot: Anti-ATM antibody [Y170] (ab32420) staining at 1/1000 dilution, shown in green; Mouse anti-CANX [CANX/1543] ([ab238078](#)) loading control staining at 1/20000 dilution, shown in red. In Western blot, ab32420 was shown to bind specifically to ATM. A band was observed at 350 kDa in wild-type MCF7 cell lysates with a reduction in signal observed at this size in ATM heterozygous knockout cell line [ab282630](#). To generate this image, wild-type and ATM heterozygous knockout MCF7 cell lysates were analysed. First, samples were run on an SDS-PAGE gel then transferred onto a nitrocellulose membrane. Membranes were

blocked in 3 % milk in TBS-0.1 % Tween[®] 20 (TBS-T) before incubation with primary antibodies overnight at 4 °C. Blots were washed four times in TBS-T, incubated with secondary antibodies for 1 h at room temperature, washed again four times then imaged. Secondary antibodies used were Goat anti-Rabbit IgG H&L 800CW and Goat anti-Mouse IgG H&L 680RD at 1/20000 dilution.



All lanes : Anti-ATM antibody [Y170] (ab32420) at 1/1000 dilution

Lane 1 : Wild-type A549 cell lysate

Lane 2 : ATM knockout A549 cell lysate

Lane 3 : HEK-293 cell lysate

Lane 4 : U-2 OS cell lysate

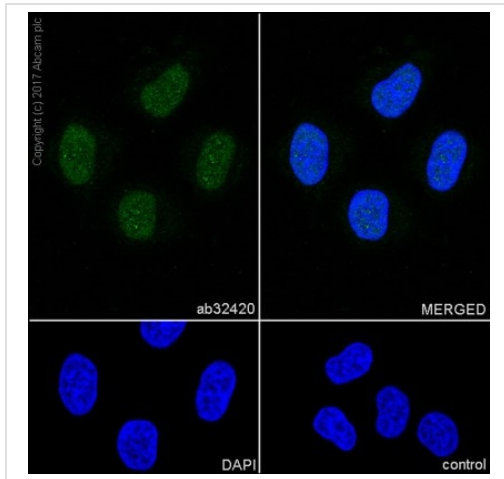
Lysates/proteins at 20 µg per lane.

Performed under reducing conditions.

Predicted band size: 350 kDa

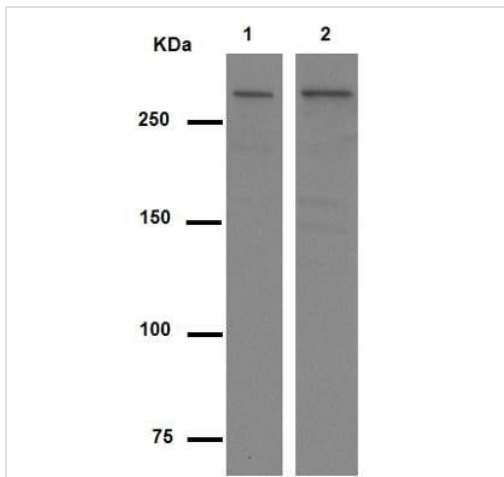
Observed band size: 350 kDa

False colour image of Western blot: Anti-ATM antibody [Y170] staining at 1/1000 dilution, shown in green; Mouse anti-Alpha Tubulin [DM1A] ([ab7291](#)) loading control staining at 1/20000 dilution, shown in red. In Western blot, ab32420 was shown to bind specifically to ATM. A band was observed at 350 kDa in wild-type A549 cell lysates with no signal observed at this size in ATM knockout cell line [ab276095](#) (knockout cell lysate [ab283834](#)). To generate this image, wild-type and ATM knockout A549 cell lysates were analysed. First, samples were run on an SDS-PAGE gel then transferred onto a nitrocellulose membrane. Membranes were blocked in 5% milk in TBS-0.1 % Tween[®] 20 (TBS-T) before incubation with primary antibodies overnight at 4°C. Blots were washed four times in TBS-T, incubated with secondary antibodies for 1 h at room temperature, washed again four times then imaged. Secondary antibodies used were Goat anti-Rabbit IgG H&L (IRDye[®] 800CW) preabsorbed ([ab216773](#)) and Goat anti-Mouse IgG H&L (IRDye[®] 680RD) preabsorbed ([ab216776](#)) at 1/20000 dilution.



Immunocytochemistry/ Immunofluorescence - Anti-ATM antibody [Y170] (ab32420)

Immunocytochemistry/ Immunofluorescence analysis of HeLa cells labeling ATM with ab32420 at 1/500. Goat anti rabbit IgG(Alexa Fluor® 488), **ab150077** at 1/1000 was used as the secondary antibody. Cells were fixed with 4% Paraformaldehyde and permeabilised with 0.1% tritonX-100. Nuclei were counterstained blue with DAPI.



Western blot - Anti-ATM antibody [Y170] (ab32420)

All lanes : Anti-ATM antibody [Y170] (ab32420) at 1/3000 dilution (Purified)

Lane 1 : HeLa cell lysate

Lane 2 : HEK293 cell lysate

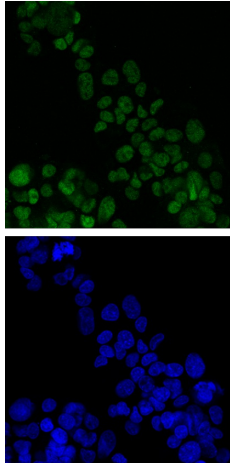
Lysates/proteins at 10 µg per lane.

Secondary

All lanes : HRP goat anti-rabbit (H+L) at 1/1000 dilution

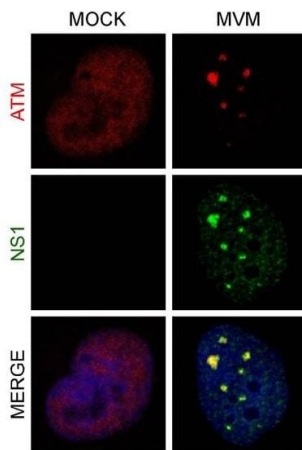
Predicted band size: 350 kDa

Observed band size: 370 kDa



Immunocytochemistry/ Immunofluorescence - Anti-ATM antibody [Y170] (ab32420)

Immunocytochemistry/ Immunofluorescence analysis of HepG2 cells labeling ATM with ab32420 at 1/500. Goat anti rabbit IgG(Alexa Fluor® 488), **ab150077** at 1/1000 was used as the secondary antibody. Cells were fixed with 4% Paraformaldehyde and permeabilised with 0.1% tritonX-100. Nuclei were counterstained blue with DAPI.



Immunocytochemistry/ Immunofluorescence - Anti-ATM antibody [Y170] (ab32420)

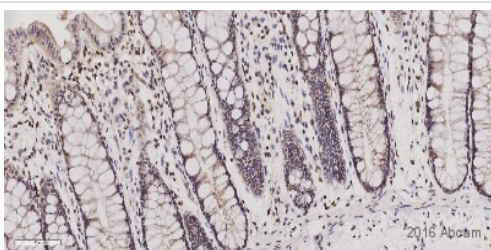
Adeyemi, R.O. et al PLoS Pathog. 2010 Oct 7;6(10):e1001141. doi: 10.1371/journal.ppat.1001141
Reproduced under the Creative Commons license
<http://creativecommons.org/licenses/by/4.0/>

DNA repair proteins accumulate at MVM APAR bodies

Repair proteins accumulate at APAR bodies. NB324K cells were infected with MVMp (MOI of 10) for 16 hr before being fixed and processed for immunofluorescence. Cells were stained with the indicated antibodies to mark DDR repair proteins. APAR bodies were detected with antibodies to NS1. Nuclei were stained with DAPI. All images were captured using an objective of 63×.

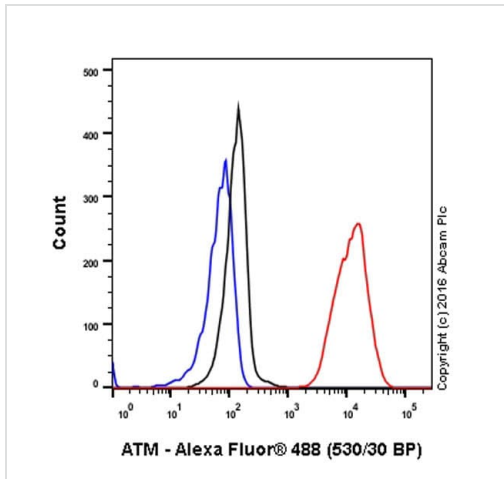
Cells were fixed with 4% paraformaldehyde for 15 minutes and permeabilized with 0.5% Triton X-100 in PBS for 15 minutes.

(Image shows the right-hand panel of Figure 2A)



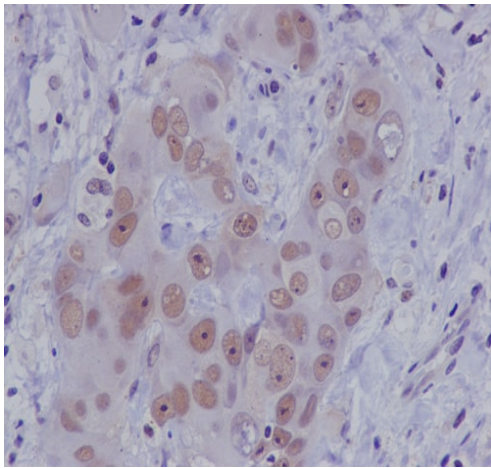
Immunohistochemistry (Formalin/PFA-fixed paraffin-embedded sections) - Anti-ATM antibody [Y170] (ab32420)

Formaldehyde-fixed human colon tissue stained for ATM using ab32420 at 1/100 dilution in immunohistochemical analysis.



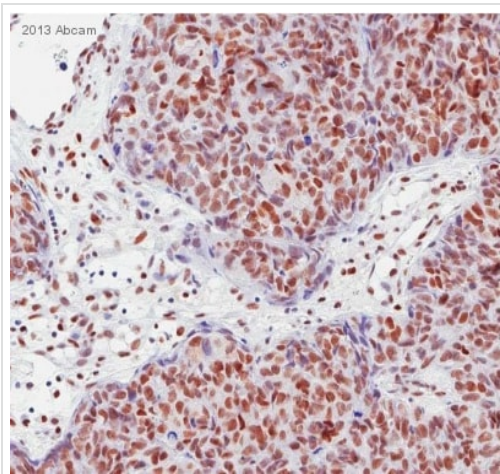
Flow Cytometry (Intracellular) - Anti-ATM antibody
[Y170] (ab32420)

Intracellular Flow Cytometry analysis of HeLa (human cervix adenocarcinoma) cells labelling ATM with purified ab32420 at 1/20 (red). Cells were fixed with 4% paraformaldehyde and permeabilised with 90% methanol. An Alexa Fluor®488-conjugated goat anti-rabbit IgG (1/2000) was used as the secondary antibody. Black - Isotype control, rabbit monoclonal IgG. Blue - Unlabelled control, cells without incubation with primary and secondary antibodies.



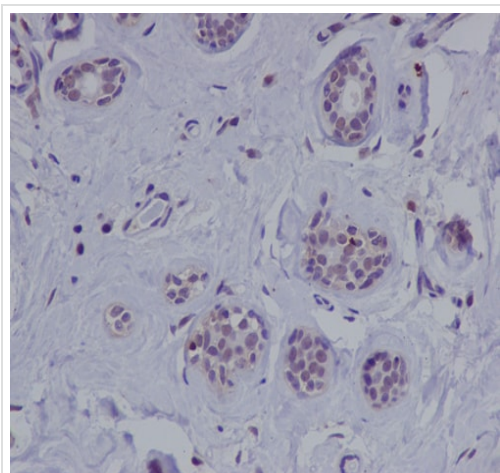
Immunohistochemistry (Formalin/PFA-fixed paraffin-embedded sections) - Anti-ATM antibody [Y170]
(ab32420)

Immunohistochemical analysis of paraffin-embedded Human breast cancer tissue labeling ATM with ab32420 at 1:100 dilution. Tissue underwent antigen retrieval using Tris/EDTA Buffer (pH9.0). The section was counterstained with haematoxylin.



Immunohistochemistry (Formalin/PFA-fixed paraffin-embedded sections) - Anti-ATM antibody [Y170] (ab32420)

Formaldehyde-fixed human serous ovarian tumor tissue stained for ATM using ab32420 at 1/50 dilution in immunohistochemical analysis.



Immunohistochemistry (Formalin/PFA-fixed paraffin-embedded sections) - Anti-ATM antibody [Y170] (ab32420)

Immunohistochemical analysis of paraffin-embedded Human normal breast tissue labeling ATM with ab32420 at 1:100 dilution. Tissue underwent antigen retrieval using Tris/EDTA Buffer (pH9.0). The section was counterstained with haematoxylin.

Why choose a recombinant antibody?



Research with confidence
Consistent and reproducible results



Long-term and scalable supply
Recombinant technology



Success from the first experiment
Confirmed specificity



Ethical standards compliant
Animal-free production

Anti-ATM antibody [Y170] (ab32420)

Please note: All products are "FOR RESEARCH USE ONLY. NOT FOR USE IN DIAGNOSTIC PROCEDURES"

Our Abpromise to you: Quality guaranteed and expert technical support

- Replacement or refund for products not performing as stated on the datasheet
- Valid for 12 months from date of delivery
- Response to your inquiry within 24 hours
- We provide support in Chinese, English, French, German, Japanese and Spanish
- Extensive multi-media technical resources to help you
- We investigate all quality concerns to ensure our products perform to the highest standards

If the product does not perform as described on this datasheet, we will offer a refund or replacement. For full details of the Abpromise, please visit <https://www.abcam.cn/abpromise> or contact our technical team.

Terms and conditions

- Guarantee only valid for products bought direct from Abcam or one of our authorized distributors