

### Anti-ATG4C antibody [EPR15001] ab183516

敲除验证 重组 RabMAb

[1 References](#) [5 图像](#)

#### 概述

产品名称	Anti-ATG4C抗体[EPR15001]
描述	兔单克隆抗体[EPR15001] to ATG4C
宿主	Rabbit
经测试应用	适用于: WB, IHC-P, Flow Cyt (Intra)
种属反应性	与反应: Human
免疫原	Recombinant fragment. This information is proprietary to Abcam and/or its suppliers.
阳性对照	WB: 293 cells and cell lysates; Jurkat and Raji cell lysates. IHC-P: Human skeletal muscle tissue.
常规说明	<p>This product is a recombinant monoclonal antibody, which offers several advantages including:</p> <ul style="list-style-type: none"><li>- High batch-to-batch consistency and reproducibility</li><li>- Improved sensitivity and specificity</li><li>- Long-term security of supply</li><li>- Animal-free production</li></ul> <p>For more information <a href="#">see here</a>.</p> <p>Our RabMAb<sup>®</sup> technology is a patented hybridoma-based technology for making rabbit monoclonal antibodies. For details on our patents, please refer to <a href="#">RabMAb<sup>®</sup> patents</a>.</p>

#### 性能

形式	Liquid
存放说明	Shipped at 4°C. Store at +4°C short term (1-2 weeks). Upon delivery aliquot. Store at -20°C long term. Avoid freeze / thaw cycle.
存储溶液	pH: 7.2 Preservative: 0.01% Sodium azide Constituents: 59% PBS, 40% Glycerol (glycerin, glycerine), 0.05% BSA
纯度	Protein A purified
克隆	单克隆
克隆编号	EPR15001
同种型	IgG

## 应用

### The Abpromise guarantee

**Abpromise™** 承诺保证使用 ab183516 于以下的经测试应用

“应用说明”部分 下显示的仅为推荐的起始稀释度;实际最佳的稀释度/浓度应由使用者检定。

应用	Ab评论	说明
<b>WB</b>		1/1000. Detects a band of approximately 52 kDa (predicted molecular weight: 52 kDa).
<b>IHC-P</b>		1/250. Perform heat mediated antigen retrieval with Tris/EDTA buffer pH 9.0 before commencing with IHC staining protocol.
<b>Flow Cyt (Intra)</b>		1/100. <b>ab172730</b> - Rabbit monoclonal IgG, is suitable for use as an isotype control with this antibody.

## 靶标

### 功能

Cysteine protease required for autophagy, which cleaves the C-terminal part of either MAP1LC3, GABARAPL2 or GABARAP, allowing the liberation of form I. A subpopulation of form I is subsequently converted to a smaller form (form II). Form II, with a revealed C-terminal glycine, is considered to be the phosphatidylethanolamine (PE)-conjugated form, and has the capacity for the binding to autophagosomes.

### 组织特异性

Highly expressed in skeletal muscle, heart, liver and testis.

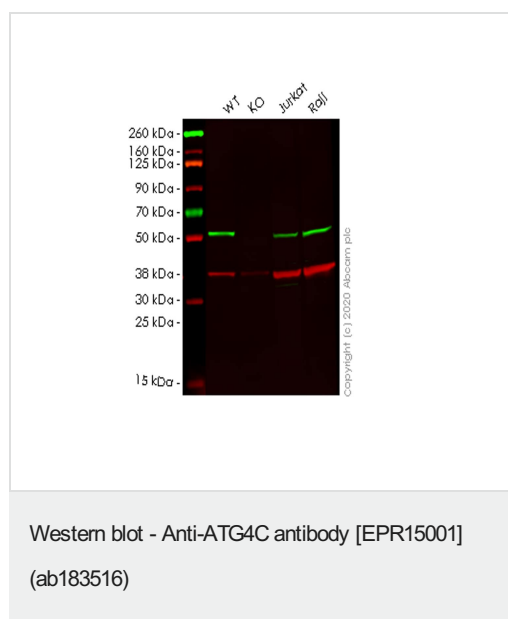
### 序列相似性

Belongs to the peptidase C54 family.

### 细胞定位

Cytoplasm.

## 图片



**All lanes** : Anti-ATG4C antibody [EPR15001] (ab183516) at 1/1000 dilution

**Lane 1** : Wild-type HEK293T cell lysate

**Lane 2** : ATG4C knockout HEK293T cell lysate

**Lane 3** : Jurkat cell lysate

**Lane 4** : Raji cell lysate

Lysates/proteins at 20 µg per lane.

### Secondary

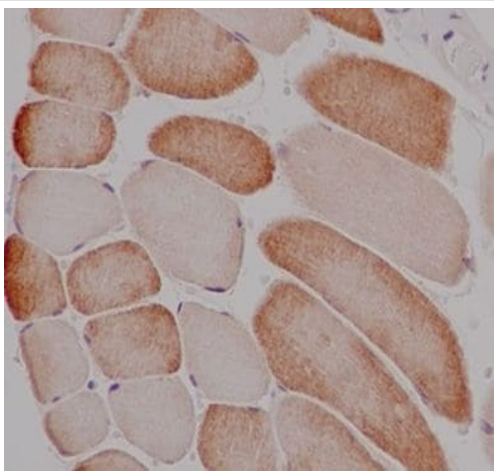
**All lanes** : Goat anti-Rabbit IgG H&L (IRDye® 800CW) preadsorbed (**ab216773**) at 1/10000 dilution

**Predicted band size:** 52 kDa

**Observed band size:** 52 kDa

**Lanes 1-4:** Merged signal (red and green). Green - ab183516 observed at 52 kDa. Red - loading control **ab8245** observed at 36 kDa.

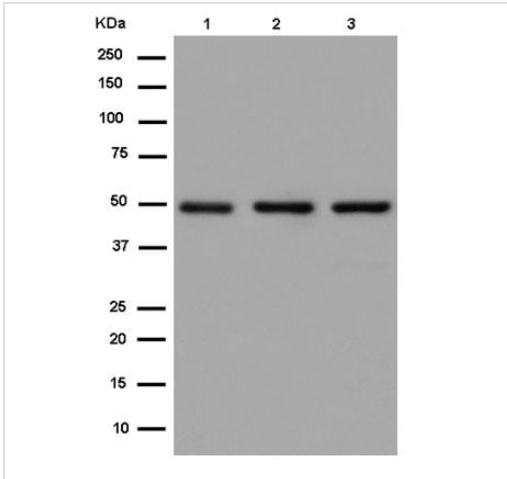
ab183516 Anti-ATG4C antibody [EPR15001] was shown to specifically react with ATG4C in wild-type HEK293T cells. Loss of signal was observed when knockout cell line **ab267324** (knockout cell lysate **ab257847**) was used. Wild-type and ATG4C knockout samples were subjected to SDS-PAGE. ab183516 and Anti-GAPDH antibody [6C5] - Loading Control (**ab8245**) were incubated overnight at 4°C at 1 in 1000 dilution and 1 in 20000 dilution respectively. Blots were developed with Goat anti-Rabbit IgG H&L (IRDye® 800CW) preadsorbed (**ab216773**) and Goat anti-Mouse IgG H&L (IRDye® 680RD) preadsorbed (**ab216776**) secondary antibodies at 1 in 20000 dilution for 1 hour at room temperature before imaging.



Immunohistochemistry (Formalin/PFA-fixed paraffin-embedded sections) - Anti-ATG4C antibody [EPR15001] (ab183516)

Immunohistochemical analysis of paraffin-embedded Human skeletal muscle tissue labeling ATG4C with ab183516 at 1/250 dilution. The slide is counterstained with Hematoxylin.

Perform heat mediated antigen retrieval with EDTA buffer pH 9 before commencing with IHC staining protocol.



Western blot - Anti-ATG4C antibody [EPR15001] (ab183516)

**All lanes :** Anti-ATG4C antibody [EPR15001] (ab183516) at 1/20000 dilution

**Lane 1 :** Jurkat cell lysate

**Lane 2 :** Raji cell lysate

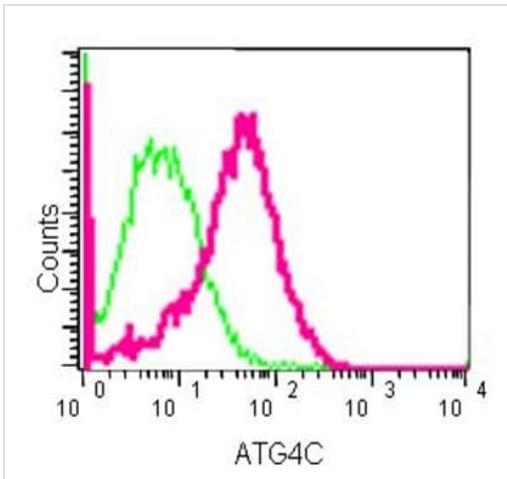
**Lane 3 :** 293 cell lysate

Lysates/proteins at 20 µg per lane.

**Secondary**

**All lanes :** Goat Anti-Rabbit IgG, (H+L), Peroxidase conjugated at 1/1000 dilution


**Predicted band size:** 52 kDa



Flow Cytometry (Intracellular) - Anti-ATG4C antibody [EPR15001] (ab183516)

Intracellular flow cytometric analysis of 2%paraformaldehyde-fixed 293 cells labeling ATG4Cwith ab183516 at 1/100 dilution (green). Goat anti-rabbit IgG (FITC) at 1/150 dilution was used as the secondary antibody. Rabbit monoclonal IgG was used as the isotype control (red).

Why choose a recombinant antibody?



**Research with confidence**  
Consistent and reproducible results

**Long-term and scalable supply**  
Recombinant technology

**Success from the first experiment**  
Confirmed specificity

**Ethical standards compliant**  
Animal-free production

Anti-ATG4C antibody [EPR15001] (ab183516)

**Please note:** All products are "FOR RESEARCH USE ONLY. NOT FOR USE IN DIAGNOSTIC PROCEDURES"

### Our Abpromise to you: Quality guaranteed and expert technical support

---

- Replacement or refund for products not performing as stated on the datasheet
- Valid for 12 months from date of delivery
- Response to your inquiry within 24 hours
- We provide support in Chinese, English, French, German, Japanese and Spanish
- Extensive multi-media technical resources to help you
- We investigate all quality concerns to ensure our products perform to the highest standards

If the product does not perform as described on this datasheet, we will offer a refund or replacement. For full details of the Abpromise, please visit <https://www.abcam.cn/abpromise> or contact our technical team.

### Terms and conditions

---

- Guarantee only valid for products bought direct from Abcam or one of our authorized distributors