


Anti-ATG3 antibody [EPR4801] ab108251

敲除验证
重组
RabMAb

★★★★☆
7 Abreviews
18 References
6 图像

概述

产品名称	Anti-ATG3抗体[EPR4801]
描述	兔单克隆抗体[EPR4801] to ATG3
宿主	Rabbit
经测试应用	适用于: WB, IHC-P, Flow Cyt (Intra), ICC/IF 不适用于: IP
种属反应性	与反应: Human 预测可用于: Mouse, Rat 
免疫原	Synthetic peptide. This information is proprietary to Abcam and/or its suppliers.
阳性对照	WB: HEK293T, K562, HL-60, HeLa or Jurkat whole cell lysate (ab7899). IHC-P: Human muscle tissue. ICC/IF: HeLa cells. Flow Cyt (intra): HeLa cells.
常规说明	<p>This product is a recombinant monoclonal antibody, which offers several advantages including:</p> <ul style="list-style-type: none"> - High batch-to-batch consistency and reproducibility - Improved sensitivity and specificity - Long-term security of supply - Animal-free production <p>For more information see here.</p> <p>Our RabMAb[®] technology is a patented hybridoma-based technology for making rabbit monoclonal antibodies. For details on our patents, please refer to RabMAb[®] patents.</p>

性能

形式	Liquid
存放说明	Shipped at 4°C. Store at +4°C short term (1-2 weeks). Upon delivery aliquot. Store at -20°C. Stable for 12 months at -20°C.
存储溶液	pH: 7.20 Preservative: 0.05% Sodium azide Constituents: 0.1% BSA, 40% Glycerol (glycerin, glycerine), 9.85% Tris glycine, 50% Tissue culture supernatant
纯度	Protein A purified
克隆	单克隆

克隆编号EPR4801

同种型IgG

应用

The Abpromise guarantee **Abpromise™**承诺保证使用ab108251于以下的经测试应用

“应用说明”部分 下显示的仅为推荐的起始稀释度;实际最佳的稀释度/浓度应由使用者检定。

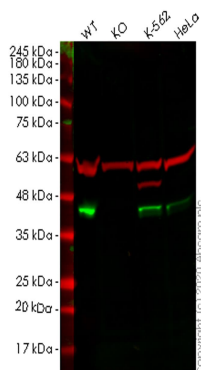
应用	Ab评论	说明
WB	★★★★★ (2)	1/10000 - 1/50000. Detects a band of approximately 40 kDa (predicted molecular weight: 36 kDa).
IHC-P		1/100 - 1/250. Perform heat mediated antigen retrieval with citrate buffer pH 6 before commencing with IHC staining protocol. Perform antigen retrieval before commencing with IHC staining protocol.
Flow Cyt (Intra)		1/2000.
ICC/IF	★★★★★ (3)	1/100 - 1/250.

应用说明 Is unsuitable for IP.

靶标

功能	E2-like enzyme involved in autophagy and mitochondrial homeostasis. Catalyzes the conjugation of ATG8-like proteins (GABARAP, GABARAPL1, GABARAPL2 or MAP1LC3A) to phosphatidylethanolamine (PE). PE-conjugation to ATG8-like proteins is essential for autophagy. Preferred substrate is MAP1LC3A. Also acts as an autocatalytic E2-like enzyme, catalyzing the conjugation of ATG12 to itself, ATG12 conjugation to ATG3 playing a role in mitochondrial homeostasis but not in autophagy. ATG7 (E1-like enzyme) facilitates this reaction by forming an E1-E2 complex with ATG3.
组织特异性	Widely expressed, with a highest expression in heart, skeletal muscle, kidney, liver and placenta.
序列相似性	Belongs to the ATG3 family.
翻译后修饰	Conjugated to ATG12 at Lys-243. ATG12-conjugation plays a role in regulation of mitochondrial homeostasis and cell death, while it is not involved in PE-conjugation to ATG8-like proteins and autophagy.
细胞定位	Cytoplasm.

图片



Western blot - Anti-ATG3 antibody [EPR4801] (ab108251)

All lanes : Anti-ATG3 antibody [EPR4801] (ab108251) at 1/1000 dilution

Lane 1 : Wild-type HEK293T cell lysate

Lane 2 : ATG3 knockout HEK293T cell lysate

Lane 3 : K-562 cell lysate

Lane 4 : HeLa cell lysate

Lysates/proteins at 20 µg per lane.

Secondary

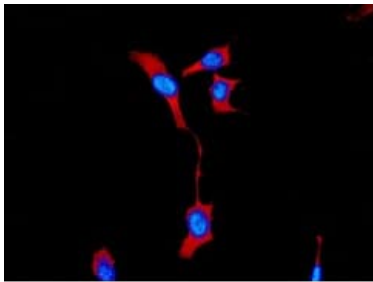
All lanes : Goat anti-Rabbit IgG H&L (IRDye® 800CW) preadsorbed (**ab216773**) at 1/10000 dilution

Predicted band size: 36 kDa

Observed band size: 40 kDa

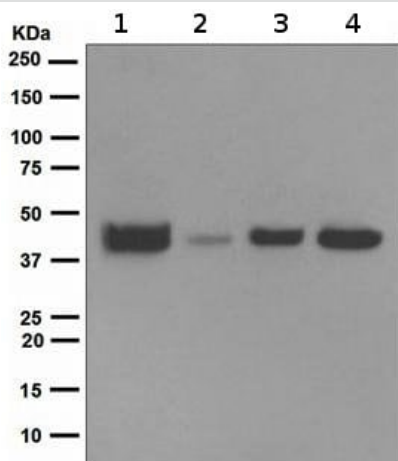
Lanes 1-4: Merged signal (red and green). Green - ab108251 observed at 40 kDa. Red - loading control **ab7291** observed at 50 kDa.

ab108251 Anti-ATG3 antibody [EPR4801] was shown to specifically react with ATG3 in wild-type HEK293T cells. Loss of signal was observed when knockout cell line **ab266707** (knockout cell lysate **ab257363**) was used. Wild-type and ATG3 knockout samples were subjected to SDS-PAGE. ab108251 and Anti-alpha Tubulin antibody [DM1A] - Loading Control (**ab7291**) were incubated overnight at 4°C at 1 in 1000 dilution and 1 in 20000 dilution respectively. Blots were developed with Goat anti-Rabbit IgG H&L (IRDye® 800CW) preadsorbed (**ab216773**) and Goat anti-Mouse IgG H&L (IRDye® 680RD) preadsorbed (**ab216776**) secondary antibodies at 1 in 20000 dilution for 1 hour at room temperature before imaging.



Immunocytochemistry/ Immunofluorescence - Anti-ATG3 antibody [EPR4801] (ab108251)

Immunofluorescent staining of HeLa cells using ab108251 at 1/100.



Western blot - Anti-ATG3 antibody [EPR4801] (ab108251)

All lanes : Anti-ATG3 antibody [EPR4801] (ab108251) at 1/10000 dilution

Lane 1 : K562 cell lysate

Lane 2 : HL-60 cell lysate

Lane 3 : HeLa cell lysate

Lane 4 : Jurkat cell lysate

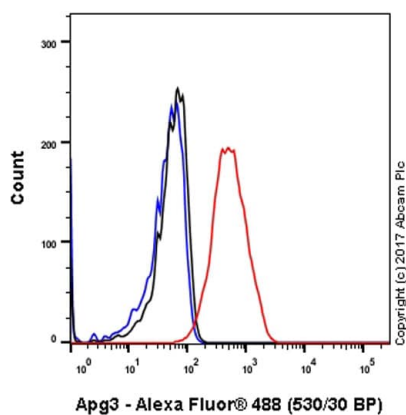
Lysates/proteins at 10 µg per lane.

Secondary

All lanes : HRP labelled goat anti-rabbit

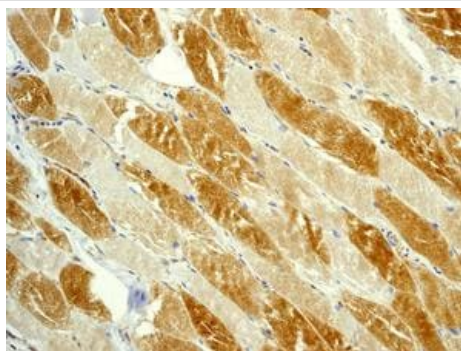
Predicted band size: 36 kDa

Observed band size: 40 kDa



Flow Cytometry (Intracellular) - Anti-ATG3 antibody
[EPR4801] (ab108251)

Intracellular Flow Cytometry analysis of HeLa (human cervix adenocarcinoma) cells labeling ATG3 (red) with ab108251 at a 1/2000 dilution. Cells were fixed with 4% paraformaldehyde and permeabilized with 90% methanol. A goat anti-rabbit IgG (Alexa Fluor® 488) (**ab150077**) was used as the secondary antibody at a 1/2000 dilution. Black - Rabbit monoclonal IgG (**ab172730**). Blue (unlabeled control) - Cells without incubation with the primary and secondary antibodies.



Immunohistochemistry (Formalin/PFA-fixed paraffin-embedded sections) - Anti-ATG3 antibody
[EPR4801] (ab108251)

ab108251, at a 1/100 dilution, staining Human ATG3 in muscle, using Immunohistochemistry, Formalin/PFA-fixed paraffin-embedded tissue.

Perform heat mediated antigen retrieval with citrate buffer pH 6 before commencing with IHC staining protocol.

Why choose a recombinant antibody?



Research with confidence
Consistent and reproducible results



Long-term and scalable supply
Recombinant technology



Success from the first experiment
Confirmed specificity



Ethical standards compliant
Animal-free production

Anti-ATG3 antibody [EPR4801] (ab108251)

Please note: All products are "FOR RESEARCH USE ONLY. NOT FOR USE IN DIAGNOSTIC PROCEDURES"

Our Abpromise to you: Quality guaranteed and expert technical support

- Replacement or refund for products not performing as stated on the datasheet
- Valid for 12 months from date of delivery
- Response to your inquiry within 24 hours

- We provide support in Chinese, English, French, German, Japanese and Spanish
- Extensive multi-media technical resources to help you
- We investigate all quality concerns to ensure our products perform to the highest standards

If the product does not perform as described on this datasheet, we will offer a refund or replacement. For full details of the Abpromise, please visit <https://www.abcam.cn/abpromise> or contact our technical team.

Terms and conditions

- Guarantee only valid for products bought direct from Abcam or one of our authorized distributors