

Anti-ATG10 antibody [EPR4804] ab124711

敲除验证 重组 RabMAb

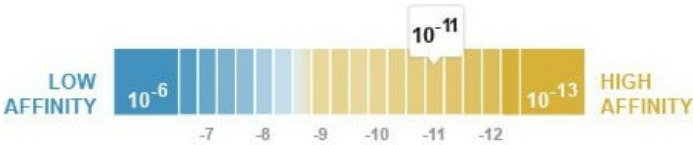
14 References 4 图像

概述

产品名称	Anti-ATG10抗体[EPR4804]
描述	兔单克隆抗体[EPR4804] to ATG10
宿主	Rabbit
经测试应用	适用于: WB 不适用于: Flow Cyt, ICC/IF or IHC-P
种属反应性	与反应: Human
免疫原	Synthetic peptide corresponding to Human ATG10 aa 200-300 (C terminal). Database link: Q9H0Y0
阳性对照	WB: HeLa, K562, and 293T cell lysates.
常规说明	<p>This product is a recombinant monoclonal antibody, which offers several advantages including:</p> <ul style="list-style-type: none">- High batch-to-batch consistency and reproducibility- Improved sensitivity and specificity- Long-term security of supply- Animal-free production <p>For more information see here.</p> <p>Our RabMAb[®] technology is a patented hybridoma-based technology for making rabbit monoclonal antibodies. For details on our patents, please refer to RabMAb[®] patents.</p> <p>Mouse, Rat: We have preliminary internal testing data to indicate this antibody may not react with these species. Please contact us for more information.</p>

性能

形式	Liquid
存放说明	Shipped at 4°C. Store at -20°C. Stable for 12 months at -20°C.
解离常数 (K _D)	K _D = 9.20 x 10 ⁻¹¹ M



[Learn more about K_D](#)

存储溶液	pH: 7.20 Preservative: 0.05% Sodium azide Constituents: 40% Glycerol (glycerin, glycerine), 9.85% Tris glycine, 50% Tissue culture supernatant
纯度	Protein A purified
克隆	单克隆
克隆编号	EPR4804
同种型	IgG

应用

The Abpromise guarantee **Abpromise™**承诺保证使用ab124711于以下的经测试应用

“应用说明”部分 下显示的仅为推荐的起始稀释度;实际最佳的稀释度/浓度应由使用者检定。

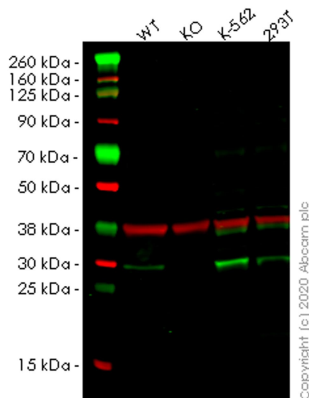
应用	Ab评论	说明
WB		1/1000 - 1/10000. Predicted molecular weight: 25 kDa.

应用说明 Is unsuitable for Flow Cyt, ICC/IF or IHC-P.

靶标

功能	E2-like enzyme involved in autophagy. Acts as an E2-like enzyme that catalyzes the conjugation of ATG12 to ATG5. ATG12 conjugation to ATG5 is required for autophagy. Likely serves as an ATG5-recognition molecule. Not involved in ATG12 conjugation to ATG3 (By similarity). Plays a role in adenovirus-mediated cell lysis.
序列相似性	Belongs to the ATG10 family.
细胞定位	Cytoplasm.

图片



Western blot - Anti-ATG10 antibody [EPR4804] (ab124711)

All lanes : Anti-ATG10 antibody [EPR4804] (ab124711) at 1/1000 dilution

Lane 1 : Wild-type HeLa (Human epithelial cell line from cervix adenocarcinoma) whole cell lysate

Lane 2 : ATG10 knockout HeLa (Human epithelial cell line from cervix adenocarcinoma) whole cell lysate

Lane 3 : K562 (Human chronic myelogenous leukemia lymphoblast cell line) whole cell lysate

Lane 4 : HEK-293T (Human epithelial cell line from embryonic kidney transformed with large T antigen) whole cell lysate

Lysates/proteins at 20 µg per lane.

Secondary

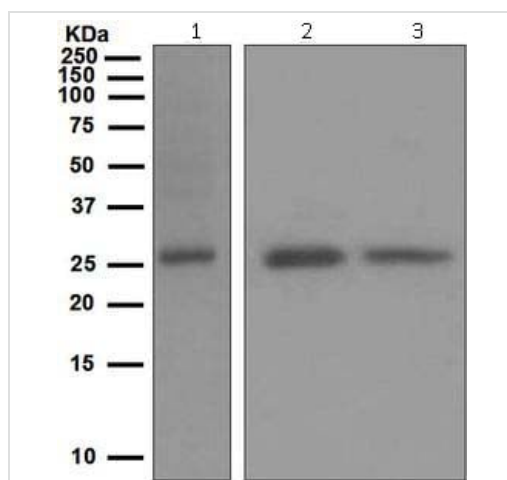
All lanes : Goat anti-Rabbit IgG H&L (IRDye® 800CW) preadsorbed ([ab216773](#)) at 1/10000 dilution

Predicted band size: 25 kDa

Observed band size: 28 kDa

Lanes 1-4: Merged signal (red and green). Green - ab124711 observed at 28 kDa. Red - loading control [ab8245](#) observed at 36 kDa.

ab124711 Anti-ATG10 antibody [EPR4804] was shown to specifically react with ATG10 in wild-type HeLa cells. Loss of signal was observed when knockout cell line [ab265682](#) (knockout cell lysate [ab258786](#)) was used. Wild-type and ATG10 knockout samples were subjected to SDS-PAGE. ab124711 and Anti-GAPDH antibody [6C5] - Loading Control ([ab8245](#)) were incubated overnight at 4°C at 1 in 1000 dilution and 1 in 20000 dilution respectively. Blots were developed with Goat anti-Rabbit IgG H&L (IRDye® 800CW) preadsorbed ([ab216773](#)) and Goat anti-Mouse IgG H&L (IRDye® 680RD) preadsorbed ([ab216776](#)) secondary antibodies at 1 in 20000 dilution for 1 hour at room temperature before imaging.



Western blot - Anti-ATG10 antibody [EPR4804]
(ab124711)

All lanes : Anti-ATG10 antibody [EPR4804] (ab124711) at 1/1000 dilution

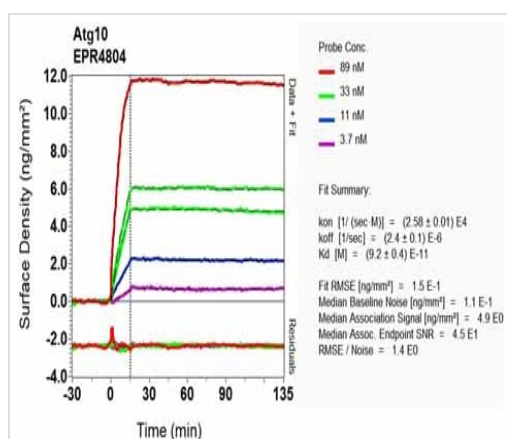
Lane 1 : HeLa cell lysates

Lane 2 : K562 cell lysates

Lane 3 : 293T cell lysates

Lysates/proteins at 10 µg per lane.

Predicted band size: 25 kDa



SPR Scanning - Anti-ATG10 antibody [EPR4804]
(ab124711)

Equilibrium dissociation constant (K_D)

Learn more about K_D

[Click here to learn more about \$K_D\$](#)

Why choose a recombinant antibody?



Research with confidence
Consistent and reproducible results



Long-term and scalable supply
Recombinant technology



Success from the first experiment
Confirmed specificity



Ethical standards compliant
Animal-free production

Anti-ATG10 antibody [EPR4804] (ab124711)

Please note: All products are "FOR RESEARCH USE ONLY. NOT FOR USE IN DIAGNOSTIC PROCEDURES"

Our Abpromise to you: Quality guaranteed and expert technical support

- Replacement or refund for products not performing as stated on the datasheet
- Valid for 12 months from date of delivery
- Response to your inquiry within 24 hours
- We provide support in Chinese, English, French, German, Japanese and Spanish
- Extensive multi-media technical resources to help you
- We investigate all quality concerns to ensure our products perform to the highest standards

If the product does not perform as described on this datasheet, we will offer a refund or replacement. For full details of the Abpromise, please visit <https://www.abcam.cn/abpromise> or contact our technical team.

Terms and conditions

- Guarantee only valid for products bought direct from Abcam or one of our authorized distributors