

# Anti-Aspartate beta hydroxylase antibody [EPR10351] ab172475

**重组** RabMAb

**1 References**   **6 图像**

### 概述

产品名称	Anti-Aspartate beta hydroxylase抗体[EPR10351]
描述	兔单克隆抗体[EPR10351] to Aspartate beta hydroxylase
宿主	Rabbit
经测试应用	<b>适用于:</b> Flow Cyt (Intra), WB, IHC-P, ICC/IF <b>不适用于:</b> IP
种属反应性	<b>与反应:</b> Human
免疫原	Synthetic peptide within Human Aspartate beta hydroxylase aa 250-350 (Cysteine residue). The exact sequence is proprietary. Database link: <a href="#">Q12797</a>
阳性对照	HeLa, A549 and HepG2 whole cell lysate ( <a href="#">ab7900</a> ); Human colon carcinoma and pancreas tissues; HeLa cells
常规说明	<p>This product is a recombinant monoclonal antibody, which offers several advantages including:</p> <ul style="list-style-type: none"> <li>- High batch-to-batch consistency and reproducibility</li> <li>- Improved sensitivity and specificity</li> <li>- Long-term security of supply</li> <li>- Animal-free production</li> </ul> <p>For more information <a href="#">see here</a>.</p> <p>Our RabMAb<sup>®</sup> technology is a patented hybridoma-based technology for making rabbit monoclonal antibodies. For details on our patents, please refer to <a href="#">RabMAb<sup>®</sup> patents</a>.</p> <p>Mouse, Rat: We have preliminary internal testing data to indicate this antibody may not react with these species. Please contact us for more information.</p>

### 性能

形式	Liquid
存放说明	Shipped at 4°C. Store at +4°C short term (1-2 weeks). Upon delivery aliquot. Store at -20°C long term. Avoid freeze / thaw cycle.
存储溶液	pH: 7.20 Preservative: 0.01% Sodium azide Constituents: 9% PBS, 40% Glycerol (glycerin, glycerine), 0.05% BSA, 50% Tissue culture

	supernatant
纯度	Tissue culture supernatant
克隆	单克隆
克隆编号	EPR10351
同种型	IgG

## 应用

**The Abpromise guarantee**      **Abpromise™承诺保证使用ab172475于以下的经测试应用**

“应用说明”部分下显示的仅为推荐的起始稀释度;实际最佳的稀释度/浓度应由使用者检定。

应用	Ab评论	说明
Flow Cyt (Intra)		1/10 - 1/100. <b>ab172730</b> - Rabbit monoclonal IgG, is suitable for use as an isotype control with this antibody.
WB		1/10000 - 1/50000. Detects a band of approximately 120-130 kDa (predicted molecular weight: 86 kDa).
IHC-P		1/50 - 1/100. Perform heat mediated antigen retrieval with citrate buffer pH 6 before commencing with IHC staining protocol.
ICC/IF		1/250 - 1/500.

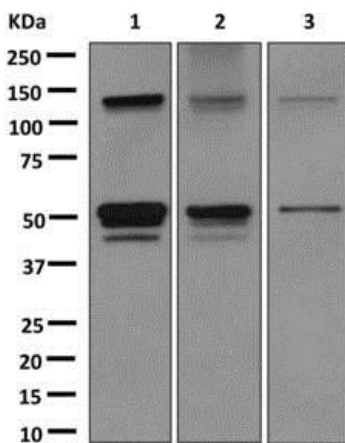
应用说明 Is unsuitable for IP.

靶标

相关性	ASPH is thought to play an important role in calcium homeostasis. Alternative splicing of this gene results in five transcript variants which vary in protein translation, the coding of catalytic domains, and tissue expression. Variation among these transcripts impacts their functions which involve roles in the calcium storage and release process in the endoplasmic and sarcoplasmic reticulum as well as hydroxylation of aspartic acid and asparagine in epidermal growth factor like domains of various proteins.
-----	---

**细胞定位** Endoplasmic reticulum; endoplasmic reticulum membrane; Single-pass type II membrane protein.

图片



Western blot - Anti-Aspartate beta hydroxylase antibody [EPR10351] (ab172475)

**All lanes :** Anti-Aspartate beta hydroxylase antibody [EPR10351] (ab172475) at 1/10000 dilution

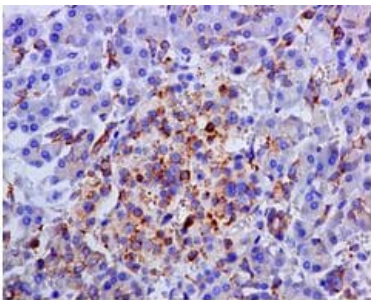
**Lane 1 :** HeLa cell lysate

**Lane 2 :** A549 cell lysate

**Lane 3 :** HepG2 cell lysate

Lysates/proteins at 10 µg per lane.

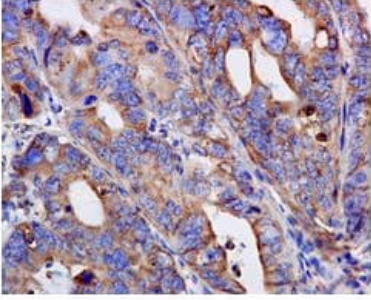
**Predicted band size:** 86 kDa



Immunohistochemistry (Formalin/PFA-fixed paraffin-embedded sections) - Anti-Aspartate beta hydroxylase antibody [EPR10351] (ab172475)

Immunohistochemical analysis of paraffin embedded Human pancreas tissue labeling Aspartate beta hydroxylase with ab172475 at 1/50 dilution.

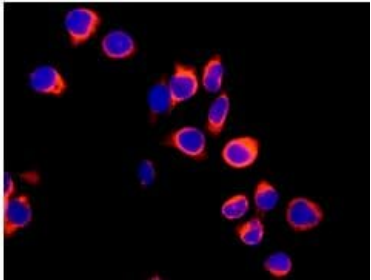
Perform heat mediated antigen retrieval with citrate buffer pH 6 before commencing with IHC staining protocol.



Immunohistochemistry (Formalin/PFA-fixed paraffin-embedded sections) - Anti-Aspartate beta hydroxylase antibody [EPR10351] (ab172475)

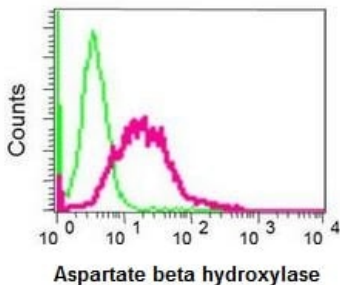
Immunohistochemical analysis of paraffin embedded Human colon carcinoma tissue labeling Aspartate beta hydroxylase with ab172475 at 1/50 dilution.

Perform heat mediated antigen retrieval with citrate buffer pH 6 before commencing with IHC staining protocol.



Immunocytochemistry/ Immunofluorescence - Anti-Aspartate beta hydroxylase antibody [EPR10351] (ab172475)

Immunofluorescent analysis of HeLa cells labeling Aspartate beta hydroxylase with ab172475 at 1/250 dilution (red). DAPI nuclear staining (blue).



Flow Cytometry (Intracellular) - Anti-Aspartate beta hydroxylase antibody [EPR10351] (ab172475)

Intracellular flow cytometric analysis of permeabilized HeLa cells labeling Aspartate beta hydroxylase with ab172475 at 1/10 dilution (red) compared to a Rabbit IgG (negative) (green).

### Why choose a recombinant antibody?



**Research with confidence**  
Consistent and reproducible results



**Long-term and scalable supply**  
Recombinant technology



**Success from the first experiment**  
Confirmed specificity



**Ethical standards compliant**  
Animal-free production

Anti-Aspartate beta hydroxylase antibody  
[EPR10351] (ab172475)

**Please note:** All products are "FOR RESEARCH USE ONLY. NOT FOR USE IN DIAGNOSTIC PROCEDURES"

### Our Abpromise to you: Quality guaranteed and expert technical support

---

- Replacement or refund for products not performing as stated on the datasheet
- Valid for 12 months from date of delivery
- Response to your inquiry within 24 hours
- We provide support in Chinese, English, French, German, Japanese and Spanish
- Extensive multi-media technical resources to help you
- We investigate all quality concerns to ensure our products perform to the highest standards

If the product does not perform as described on this datasheet, we will offer a refund or replacement. For full details of the Abpromise, please visit <https://www.abcam.cn/abpromise> or contact our technical team.

### Terms and conditions

---

- Guarantee only valid for products bought direct from Abcam or one of our authorized distributors