

# Anti-ARTD10 antibody ab70800

**1 References**   **3 图像**

### 概述

产品名称	Anti-ARTD10抗体
描述	兔多克隆抗体to ARTD10
宿主	Rabbit
经测试应用	适用于: IHC-P, WB, IP
种属反应性	与反应: Human
免疫原	Synthetic peptide corresponding to Human ARTD10 aa 300-400. NP_116178.1 Database link: <a href="#">Q53GL7</a>
阳性对照	WB: Whole cell lysate from HeLa cells.
常规说明	<p>The Life Science industry has been in the grips of a reproducibility crisis for a number of years. Abcam is leading the way in addressing this with our range of recombinant monoclonal antibodies and knockout edited cell lines for gold-standard validation. Please check that this product meets your needs before purchasing.</p> <p>If you have any questions, special requirements or concerns, please send us an inquiry and/or contact our Support team ahead of purchase. Recommended alternatives for this product can be found below, along with publications, customer reviews and Q&amp;As</p>

### 性能

形式	Liquid
存放说明	Shipped at 4°C. Upon delivery aliquot and store at -20°C. Avoid freeze / thaw cycles.
存储溶液	pH: 7 Preservative: 0.09% Sodium azide Constituents: 1.815% Tris, 1.764% Sodium citrate, PBS
纯度	Immunogen affinity purified
克隆	多克隆
同种型	IgG

### 应用

The Abpromise guarantee

**Abpromise™** 承诺保证使用ab70800于以下的经测试应用

“应用说明”部分 下显示的仅为推荐的起始稀释度;实际最佳的稀释度/浓度应由使用者检定。

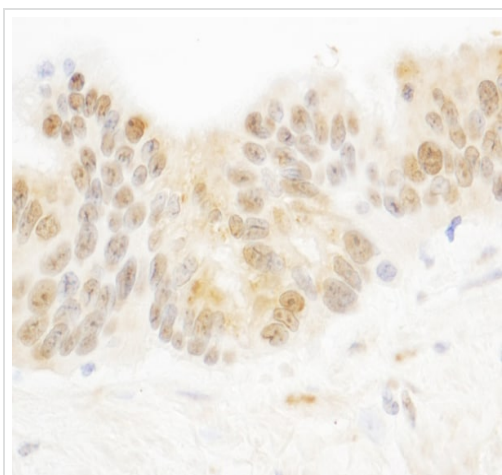
应用	Ab评论	说明
IHC-P		1/500 - 1/2000. Perform heat mediated antigen retrieval with citrate buffer pH 6 before commencing with IHC staining protocol.
WB		1/500 - 1/2500. Detects a band of approximately 123 kDa (predicted molecular weight: 123 kDa).
IP		Use at 1-4 µg/mg of lysate.

## 靶标

**相关性** Poly (ADP ribose) polymerases (PARPs), such as PARP10, regulate gene transcription by altering chromatin organization by adding ADP ribose to histones. PARPs can also function as transcriptional cofactors

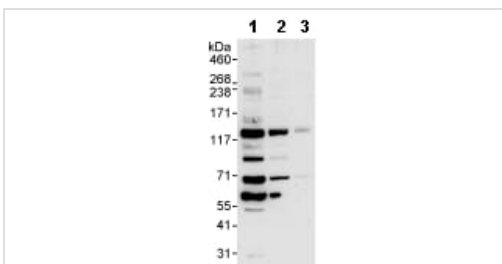
**细胞定位** Nuclear

## 图片



Immunohistochemistry (Formalin/PFA-fixed paraffin-embedded sections) analysis of human ovarian carcinoma tissue labeling ARTD10 with ab70800 at 1/1000 (1µg/ml). Detection: DAB.

Immunohistochemistry (Formalin/PFA-fixed paraffin-embedded sections) - Anti-ARTD10 antibody (ab70800)



**All lanes :** Anti-ARTD10 antibody (ab70800) at 1 µg/ml

**Lane 1 :** HeLa whole cell lysate at 50 µg

**Lane 2 :** HeLa whole cell lysate at 15 µg

**Lane 3 :** HeLa whole cell lysate at 5 µg

Western blot - Anti-ARTD10 antibody (ab70800)

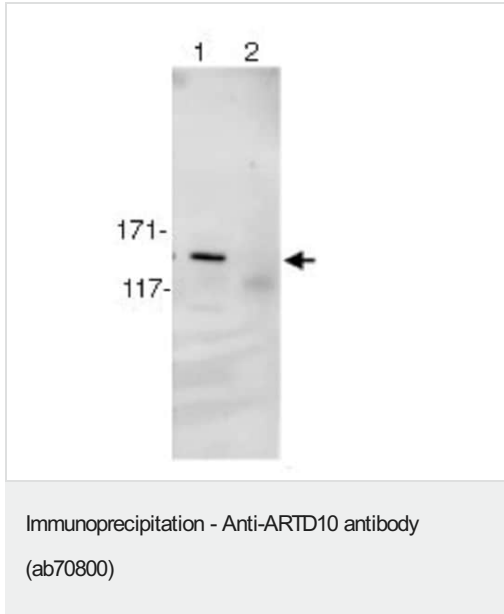
Developed using the ECL technique.

**Predicted band size:** 123 kDa

**Observed band size:** 123 kDa

**Additional bands at:** 60 kDa, 70 kDa, 90 kDa. We are unsure as to the identity of these extra bands.

**Exposure time:** 3 minutes



1mg of whole cell lysate from HeLa cells was immunoprecipitated using ab70800 at 3ug/mg of lysate (lane 1) or a control rabbit Ig (lane 2). For the subsequent western blot, 20% of immunoprecipitate was loaded per lane, and probed with ab70800 at 1ug/ml.

**Detection:** Chemiluminescence with exposure time of 30 seconds.

**Please note:** All products are "FOR RESEARCH USE ONLY. NOT FOR USE IN DIAGNOSTIC PROCEDURES"

#### Our Abpromise to you: Quality guaranteed and expert technical support

- Replacement or refund for products not performing as stated on the datasheet
- Valid for 12 months from date of delivery
- Response to your inquiry within 24 hours
- We provide support in Chinese, English, French, German, Japanese and Spanish
- Extensive multi-media technical resources to help you
- We investigate all quality concerns to ensure our products perform to the highest standards

If the product does not perform as described on this datasheet, we will offer a refund or replacement. For full details of the Abpromise, please visit <https://www.abcam.cn/abpromise> or contact our technical team.

#### Terms and conditions

- Guarantee only valid for products bought direct from Abcam or one of our authorized distributors