


# Anti-ARSA/ASA antibody [EPR11039] ab174844

**重组** RabMAb

**1 References**   **4 图像**

### 概述

产品名称	Anti-ARSA/ASA抗体[EPR11039]
描述	兔单克隆抗体[EPR11039] to ARSA/ASA
宿主	Rabbit
经测试应用	<b>适用于:</b> IHC-P, WB <b>不适用于:</b> Flow Cyt, ICC/IF or IP
种属反应性	<b>与反应:</b> Human <b>预测可用于:</b> Mouse  <b>不与反应:</b> Rat
免疫原	Synthetic peptide. This information is proprietary to Abcam and/or its suppliers.
阳性对照	Human skin, A431 and HeLa lysates; Human colon and kidney tissues.
常规说明	<p>This product is a recombinant monoclonal antibody, which offers several advantages including:</p> <ul style="list-style-type: none"> <li>- High batch-to-batch consistency and reproducibility</li> <li>- Improved sensitivity and specificity</li> <li>- Long-term security of supply</li> <li>- Animal-free production</li> </ul> <p>For more information <a href="#">see here</a>.</p> <p>Our RabMAb<sup>®</sup> technology is a patented hybridoma-based technology for making rabbit monoclonal antibodies. For details on our patents, please refer to <a href="#">RabMAb<sup>®</sup> patents</a>.</p>

### 性能

形式	Liquid
存放说明	Shipped at 4°C. Store at +4°C short term (1-2 weeks). Upon delivery aliquot. Store at -20°C long term. Avoid freeze / thaw cycle.
存储溶液	pH: 7.20 Preservative: 0.01% Sodium azide Constituents: 9% PBS, 40% Glycerol (glycerin, glycerine), 0.05% BSA, 50% Tissue culture supernatant
纯度	Protein A purified
克隆	单克隆

克隆编号EPR11039

同种型IgG

应用

The Abpromise guarantee

Abpromise™承诺保证使用ab174844于以下的经测试应用

“应用说明”部分 下显示的仅为推荐的起始稀释度;实际最佳的稀释度/浓度应由使用者检定。

应用	Ab评论	说明
IHC-P		1/50 - 1/100. Perform heat mediated antigen retrieval before commencing with IHC staining protocol.
WB		1/1000 - 1/5000. Detects a band of approximately 60-62 kDa (predicted molecular weight: 54 kDa).

应用说明

Is unsuitable for Flow Cyt, ICC/IF or IP.

靶标

功能

Hydrolyzes cerebroside sulfate.

疾病相关

Defects in ARSA are a cause of leukodystrophy metachromatic (MLD) [MIM:250100]. MLD is a disease due to a lysosomal storage defect. It is characterized by intralysosomal storage of cerebroside-3-sulfate in neural and non-neural tissues, with a diffuse loss of myelin in the central nervous system. Progressive demyelination causes a variety of neurological symptoms, including gait disturbances, ataxias, optical atrophy, dementia, seizures, and spastic tetraparesis. Three forms of the disease can be distinguished according to the age at onset: late-infantile, juvenile and adult.

Arylsulfatase A activity is defective in multiple sulfatase deficiency (MSD) [MIM:272200]. MSD is a disorder characterized by decreased activity of all known sulfatases. MSD is due to defects in SUMF1 resulting in the lack of post-translational modification of a highly conserved cysteine into 3-oxoalanine. It combines features of individual sulfatase deficiencies such as metachromatic leukodystrophy, mucopolysaccharidosis, chondrodysplasia punctata, hydrocephalus, ichthyosis, neurologic deterioration and developmental delay.

序列相似性

Belongs to the sulfatase family.

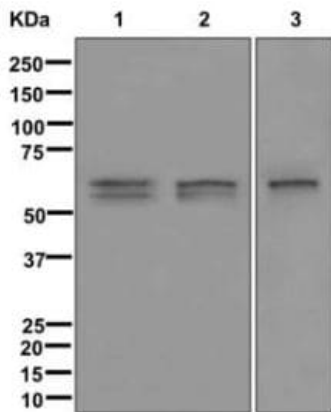
翻译后修饰

The conversion to 3-oxoalanine (also known as C-formylglycine, FGly), of a serine or cysteine residue in prokaryotes and of a cysteine residue in eukaryotes, is critical for catalytic activity. This post-translational modification is severely defective in multiple sulfatase deficiency (MSD).

细胞定位

Lysosome.

图片



Western blot - Anti-ARSA/ASA antibody  
[EPR11039] (ab174844)

**All lanes :** Anti-ARSA/ASA antibody [EPR11039] (ab174844) at  
1/1000 dilution

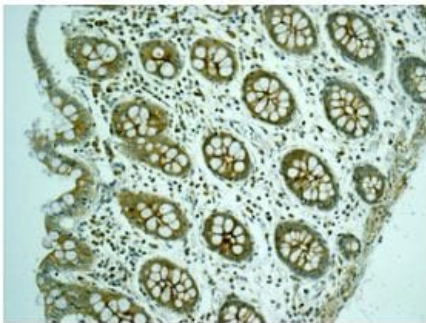
**Lane 1 :** Human skin lysates

**Lane 2 :** A431 cell lysates

**Lane 3 :** HeLa cell lysates

Lysates/proteins at 10 µg per lane.

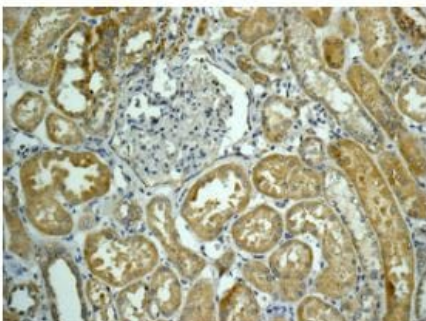
**Predicted band size:** 54 kDa



Immunohistochemistry (Formalin/PFA-fixed paraffin-  
embedded sections) - Anti-ARSA/ASA antibody  
[EPR11039] (ab174844)

Immunohistochemical analysis of formalin-fixed, paraffin-embedded  
Human colon tissue labeling ARSA/ASA with ab174844 at 1/50  
dilution.

Perform heat mediated antigen retrieval before commencing with  
IHC staining protocol.



Immunohistochemistry (Formalin/PFA-fixed paraffin-  
embedded sections) - Anti-ARSA/ASA antibody  
[EPR11039] (ab174844)

Immunohistochemical analysis of formalin-fixed, paraffin-embedded  
Human kidney tissue labeling ARSA/ASA with ab174844 at 1/50  
dilution.

Perform heat mediated antigen retrieval before commencing with  
IHC staining protocol.

### Why choose a recombinant antibody?



**Research with confidence**  
Consistent and reproducible results



**Long-term and scalable supply**  
Recombinant technology



**Success from the first experiment**  
Confirmed specificity



**Ethical standards compliant**  
Animal-free production

Anti-ARSA/ASA antibody [EPR11039] (ab174844)

**Please note:** All products are "FOR RESEARCH USE ONLY. NOT FOR USE IN DIAGNOSTIC PROCEDURES"

### Our Abpromise to you: Quality guaranteed and expert technical support

---

- Replacement or refund for products not performing as stated on the datasheet
- Valid for 12 months from date of delivery
- Response to your inquiry within 24 hours
- We provide support in Chinese, English, French, German, Japanese and Spanish
- Extensive multi-media technical resources to help you
- We investigate all quality concerns to ensure our products perform to the highest standards

If the product does not perform as described on this datasheet, we will offer a refund or replacement. For full details of the Abpromise, please visit <https://www.abcam.cn/abpromise> or contact our technical team.

### Terms and conditions

---

- Guarantee only valid for products bought direct from Abcam or one of our authorized distributors