

Anti-ARS2 antibody ab88392

3 图像

概述	
产品名称	Anti-ARS2抗体
描述	小鼠多克隆抗体to ARS2
宿主	Mouse
经测试应用	适用于: WB
种属反应性	与反应: Human
免疫原	Partial protein corresponding to amino acids 80 - 876 of human ARS2 (Swissprot id Q9BXP5).
阳性对照	Human pancreas tissue lysate, Jurkat cell lysate and ARS2 transfected 293T cell lysate
常规说明	<p>The Life Science industry has been in the grips of a reproducibility crisis for a number of years. Abcam is leading the way in addressing this with our range of recombinant monoclonal antibodies and knockout edited cell lines for gold-standard validation. Please check that this product meets your needs before purchasing.</p> <p>If you have any questions, special requirements or concerns, please send us an inquiry and/or contact our Support team ahead of purchase. Recommended alternatives for this product can be found below, along with publications, customer reviews and Q&amp;As</p>
性能	
形式	Liquid
存放说明	Shipped at 4°C. Upon delivery aliquot and store at -20°C or -80°C. Avoid repeated freeze / thaw cycles.
存储溶液	pH: 7.40 Constituent: 100% PBS
纯度	Protein A purified
克隆	多克隆
同种型	IgG
应用	

The Abpromise guarantee      **Abpromise™**承诺保证使用ab88392于以下的经测试应用

“应用说明”部分 下显示的仅为推荐的起始稀释度;实际最佳的稀释度/浓度应由使用者检定。

应用	Ab评论	说明
WB		Use a concentration of 1 µg/ml. Predicted molecular weight: 101 kDa.

靶标

功能	Acts as a mediator between the cap-binding complex (CBC) and the primary microRNAs (miRNAs) processing machinery during cell proliferation. Contributes to the stability and delivery of capped primary miRNA transcripts to the primary miRNA processing complex containing DGCR8 and DROSHA, thereby playing a role in RNA-mediated gene silencing (RNAi) by miRNAs. Binds capped RNAs (m7GpppG-capped RNA); however interaction is probably mediated via its interaction with NCBP1/CBP80 component of the CBC complex. Involved in cell cycle progression at S phase. Does not directly confer arsenite resistance but rather modulates arsenic sensitivity.
组织特异性	Ubiquitously expressed.
序列相似性	Belongs to the ARS2 family.
细胞定位	Nucleus > nucleoplasm. Cytoplasm. Predominantly nuclear. Shuttles between the nucleus and the cytoplasm in a CRM1-dependent way.

图片



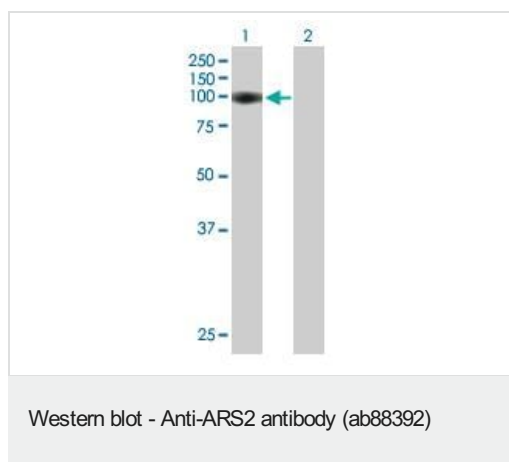
Anti-ARS2 antibody (ab88392) at 1 µg/ml + human pancreas tissue lysate at 50 µg

**Predicted band size:** 101 kDa  
**Observed band size:** 99 kDa



Anti-ARS2 antibody (ab88392) at 1 µg/ml + Jurkat cell lysate at 50 µg

**Predicted band size:** 101 kDa



**All lanes :** Anti-ARS2 antibody (ab88392) at 1 µg/ml

**Lane 1 :** ARS2 transfected 293T cell lysate

**Lane 2 :** Non transfected 293T cell lysate

Lysates/proteins at 50 µg per lane.

**Predicted band size:** 101 kDa

**Observed band size:** 101 kDa

**Please note:** All products are "FOR RESEARCH USE ONLY. NOT FOR USE IN DIAGNOSTIC PROCEDURES"

### Our Abpromise to you: Quality guaranteed and expert technical support

---

- Replacement or refund for products not performing as stated on the datasheet
- Valid for 12 months from date of delivery
- Response to your inquiry within 24 hours
- We provide support in Chinese, English, French, German, Japanese and Spanish
- Extensive multi-media technical resources to help you
- We investigate all quality concerns to ensure our products perform to the highest standards

If the product does not perform as described on this datasheet, we will offer a refund or replacement. For full details of the Abpromise, please visit <https://www.abcam.cn/abpromise> or contact our technical team.

### Terms and conditions

---

- Guarantee only valid for products bought direct from Abcam or one of our authorized distributors