

Anti-ARF1 antibody [ARFS 3F1] ab11038

★★★★★ [6 Abreviews](#) [8 References](#) [1 图像](#)

概述

产品名称	Anti-ARF1抗体[ARFS 3F1]
描述	小鼠单克隆抗体[ARFS 3F1] to ARF1
宿主	Mouse
特异性	This antibody is specific to class I ARF.
经测试应用	适用于: IHC-P
种属反应性	与反应: Human
免疫原	Synthetic peptide: SNQLRNQ , corresponding to C terminal amino acids 174-180 of Human ARF1. Run BLAST with Run BLAST with
阳性对照	BALB/3T3 whole cell lysate (ab7901) can be used as a positive control in WB.
常规说明	<p>The Life Science industry has been in the grips of a reproducibility crisis for a number of years. Abcam is leading the way in addressing this with our range of recombinant monoclonal antibodies and knockout edited cell lines for gold-standard validation. Please check that this product meets your needs before purchasing.</p> <p>If you have any questions, special requirements or concerns, please send us an inquiry and/or contact our Support team ahead of purchase. Recommended alternatives for this product can be found below, along with publications, customer reviews and Q&As</p>

性能

形式	Liquid
存放说明	Shipped at 4°C. Upon delivery aliquot and store at -20°C or -80°C. Avoid repeated freeze / thaw cycles.
存储溶液	Preservative: 0.02% Sodium azide Constituent: 99.98% PBS
纯度	Protein A purified
克隆	单克隆
克隆编号	ARFS 3F1
骨髓瘤	Sp2/0-Ag14

应用

The Abpromise guarantee

Abpromise™承诺保证使用ab11038于以下的经测试应用

“应用说明”部分 下显示的仅为推荐的起始稀释度;实际最佳的稀释度/浓度应由使用者检定。

应用	Ab评论	说明
IHC-P		Use a concentration of 1 µg/ml. Perform heat mediated antigen retrieval with citrate buffer pH 6 before commencing with IHC staining protocol.

靶标

功能

GTP-binding protein that functions as an allosteric activator of the cholera toxin catalytic subunit, an ADP-ribosyltransferase. Involved in protein trafficking among different compartments. Modulates vesicle budding and uncoating within the Golgi complex. Deactivation induces the redistribution of the entire Golgi complex to the endoplasmic reticulum, suggesting a crucial role in protein trafficking. In its GTP-bound form, it triggers the association with coat proteins with the Golgi membrane. The hydrolysis of ARF1-bound GTP, which is mediated by ARFGAPs proteins, is required for dissociation of coat proteins from Golgi membranes and vesicles.

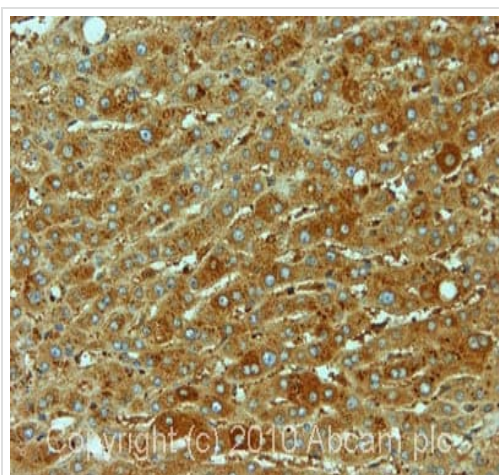
序列相似性

Belongs to the small GTPase superfamily. Arf family.

细胞定位

Golgi apparatus. Cytoplasm > perinuclear region.

图片



Immunohistochemistry (Formalin/PFA-fixed paraffin-embedded sections) - Anti-ARF1 antibody [ARFS 3F1] (ab11038)

IHC image of ab11038 staining in human normal liver formalin fixed paraffin embedded tissue section, performed on a Leica Bond™ system using the standard protocol F. The section was pre-treated using heat mediated antigen retrieval with sodium citrate buffer (pH6, epitope retrieval solution 1) for 20 mins. The section was then incubated with ab11038, 1 µg/ml, for 15 mins at room temperature and detected using an HRP conjugated compact polymer system. DAB was used as the chromogen. The section was then counterstained with haematoxylin and mounted with DPX.

For other IHC staining systems (automated and non-automated) customers should optimize variable parameters such as antigen retrieval conditions, primary antibody concentration and antibody incubation times.

Our Abpromise to you: Quality guaranteed and expert technical support

- Replacement or refund for products not performing as stated on the datasheet
- Valid for 12 months from date of delivery
- Response to your inquiry within 24 hours

- We provide support in Chinese, English, French, German, Japanese and Spanish
- Extensive multi-media technical resources to help you
- We investigate all quality concerns to ensure our products perform to the highest standards

If the product does not perform as described on this datasheet, we will offer a refund or replacement. For full details of the Abpromise, please visit <https://www.abcam.cn/abpromise> or contact our technical team.

Terms and conditions

- Guarantee only valid for products bought direct from Abcam or one of our authorized distributors