




Anti-ARF1 antibody ab58578

敲除验证

★★★★★ [4 Abreviews](#) [11 References](#) [4 图像](#)

概述

产品名称	Anti-ARF1抗体
描述	山羊多克隆抗体to ARF1
宿主	Goat
经测试应用	适用于: ELISA, Flow Cyt, WB
种属反应性	与反应: Mouse, Rat, Cow, Dog, Human 预测可用于: Xenopus laevis, Cynomolgus monkey 
免疫原	Synthetic peptide: EGLDWLSNQLRNQK by a Cysteine residue linker, corresponding to C terminal amino acids 168-181 of ARF1  Run BLAST with  Run BLAST with
阳性对照	WB: A431, HeLa, HepG2, MDCK, NIH3T3 KNRK cell lysate. Flow Cyt: A431 cells
常规说明	

This antibody is expected to recognize all four reported isoforms.

The Life Science industry has been in the grips of a reproducibility crisis for a number of years. Abcam is leading the way in addressing this with our range of recombinant monoclonal antibodies and knockout edited cell lines for gold-standard validation. Please check that this product meets your needs before purchasing.

If you have any questions, special requirements or concerns, please send us an inquiry and/or contact our Support team ahead of purchase. Recommended alternatives for this product can be found below, along with publications, customer reviews and Q&As

性能

形式	Liquid
存放说明	Shipped at 4°C. Upon delivery aliquot and store at -20°C. Avoid freeze / thaw cycles.
存储溶液	pH: 7.30 Preservative: 0.02% Sodium azide Constituents: Tris buffered saline, 0.5% BSA
纯度	Immunogen affinity purified

纯化说明	Purified from goat serum by ammonium sulphate precipitation followed by antigen affinity chromatography using the immunizing peptide.
Primary antibody说明	This antibody is expected to recognize all four reported isoforms.
克隆	多克隆
同种型	IgG

应用

The Abpromise guarantee **Abpromise™**承诺保证使用ab58578于以下的经测试应用

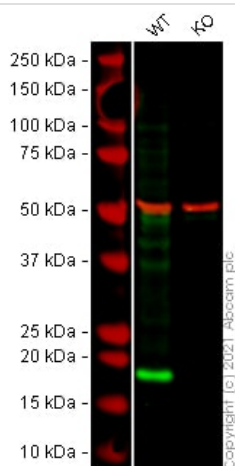
“应用说明”部分 下显示的仅为推荐的起始稀释度;实际最佳的稀释度/浓度应由使用者检定。

应用	Ab评论	说明
ELISA		Use at an assay dependent concentration.
Flow Cyt		Use a concentration of 10 µg/ml.
WB	★★★★★ (4)	Use a concentration of 0.3 - 1 µg/ml. Detects a band of approximately 18 kDa (predicted molecular weight: 21 kDa). 1 hour primary incubation is recommended for this product.

靶标

功能	GTP-binding protein that functions as an allosteric activator of the cholera toxin catalytic subunit, an ADP-ribosyltransferase. Involved in protein trafficking among different compartments. Modulates vesicle budding and uncoating within the Golgi complex. Deactivation induces the redistribution of the entire Golgi complex to the endoplasmic reticulum, suggesting a crucial role in protein trafficking. In its GTP-bound form, its triggers the association with coat proteins with the Golgi membrane. The hydrolysis of ARF1-bound GTP, which is mediated by ARFGAPs proteins, is required for dissociation of coat proteins from Golgi membranes and vesicles.
序列相似性	Belongs to the small GTPase superfamily. Arf family.
细胞定位	Golgi apparatus. Cytoplasm > perinuclear region.

图片



Western blot - Anti-ARF1 antibody (ab58578)

All lanes : Anti-ARF1 antibody (ab58578) at 1 µg/ml

Lane 1 : Wild-type HeLa cell lysate

Lane 2 : ARF1 knockout HeLa cell lysate

Lysates/proteins at 20 µg per lane.

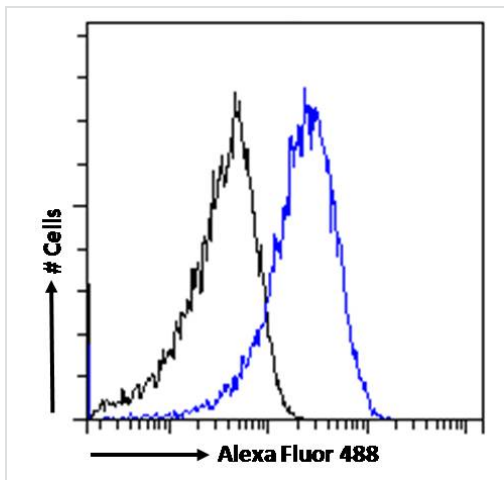
Performed under reducing conditions.

Predicted band size: 21 kDa

Observed band size: 18 kDa

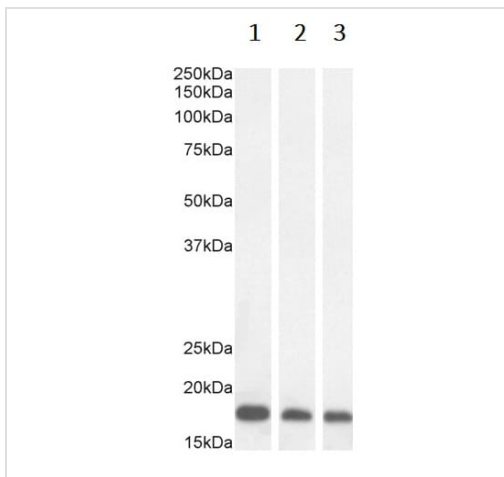
Lanes 1 - 2: Merged signal (red and green). Green - ab58578 observed at 18 kDa. Red - loading control **ab7291** (Mouse anti-Alpha Tubulin [DM1A]) observed at 55 kDa.

ab58578 was shown to react with ARF1 in wild-type HeLa cells in Western blot with loss of signal observed in ARF1 knockout cell line **ab264939** (ARF1 knockout cell lysate **ab257353**). Wild-type HeLa and ARF1 knockout cell lysates were subjected to SDS-PAGE. Membranes were blocked in 3 % milk in TBS-T (0.1 % Tween®) before incubation with ab58578 and **ab7291** (Mouse anti-Alpha Tubulin [DM1A]) overnight at 4 °C at 1 µg/ml and a 1 in 20000 dilution respectively. Blots were incubated with Donkey anti-Goat IgG H&L (IRDye® 800CW) preabsorbed (**ab216775**) and Donkey anti-Mouse 680RD secondary antibodies at 1 in 20000 dilution for 1 h at room temperature before imaging.



Flow Cytometry - Anti-ARF1 antibody (ab58578)

Flow cytometric analysis of paraformaldehyde fixed A431 cells (blue line), permeabilized with 0.5% Triton. Primary incubation 1hr (10µg/mL) followed by Alexa Fluor 488 secondary antibody (1µg/mL). IgG control: Unimmunized goat IgG (black line) followed by Alexa Fluor 488 secondary antibody.



Western blot - Anti-ARF1 antibody (ab58578)

Lane 1 : Anti-ARF1 antibody (ab58578) at 1 µg/ml

Lanes 2-3 : Anti-ARF1 antibody (ab58578) at 0.03 µg/ml

Lane 1 : A431 cell lysate

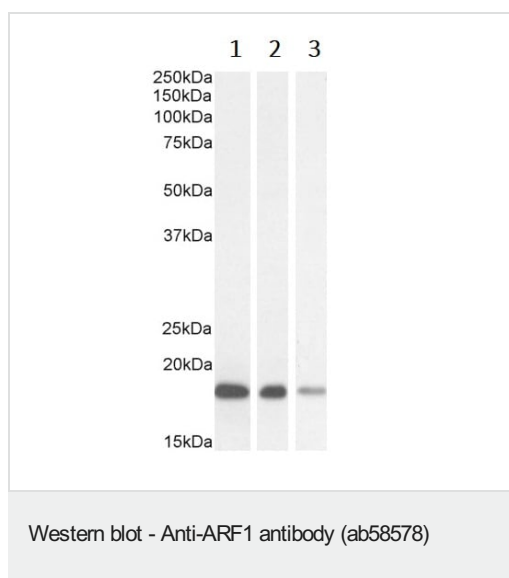
Lane 2 : HeLa cell lysate

Lane 3 : MCF7 cell lysate

Lysates/proteins at 35 µg per lane.

Predicted band size: 21 kDa

Lysates in RIPA buffer. Detected by chemiluminescence.



All lanes : Anti-ARF1 antibody (ab58578) at 1 µg/ml

Lane 1 : NIH3T3 cell lysate

Lane 2 : KNRK cell lysate

Lane 3 : MDCK cell lysate

Lysates/proteins at 35 µg per lane.

Predicted band size: 21 kDa

Lysates in RIPA buffer. Detected by chemiluminescence.

Please note: All products are "FOR RESEARCH USE ONLY. NOT FOR USE IN DIAGNOSTIC PROCEDURES"

Our Abpromise to you: Quality guaranteed and expert technical support

- Replacement or refund for products not performing as stated on the datasheet
- Valid for 12 months from date of delivery
- Response to your inquiry within 24 hours
- We provide support in Chinese, English, French, German, Japanese and Spanish
- Extensive multi-media technical resources to help you
- We investigate all quality concerns to ensure our products perform to the highest standards

If the product does not perform as described on this datasheet, we will offer a refund or replacement. For full details of the Abpromise, please visit <https://www.abcam.cn/abpromise> or contact our technical team.

Terms and conditions

- Guarantee only valid for products bought direct from Abcam or one of our authorized distributors