


Anti-APG5L/ATG5 antibody ab228668

[17 References](#) [5 图像](#)

概述

产品名称	Anti-APG5L/ATG5抗体
描述	兔多克隆抗体to APG5L/ATG5
宿主	Rabbit
经测试应用	适用于: WB, IHC-P, ICC/IF
种属反应性	与反应: Mouse, Human 预测可用于: Cow, Pig 
免疫原	Recombinant fragment within Human APG5L/ATG5 (internal sequence). The exact sequence is proprietary. Database link: Q9H1Y0
阳性对照	ICC/IF HeLa cells and thapsigargin- or chloroquine-treated HepG2 cells. IHC-P: Mouse brain tissue. WB: NT2/D1 and PC-3 whole cell lysate; HeLa cell extract.
常规说明	<p>The Life Science industry has been in the grips of a reproducibility crisis for a number of years. Abcam is leading the way in addressing this with our range of recombinant monoclonal antibodies and knockout edited cell lines for gold-standard validation. Please check that this product meets your needs before purchasing.</p> <p>If you have any questions, special requirements or concerns, please send us an inquiry and/or contact our Support team ahead of purchase. Recommended alternatives for this product can be found below, along with publications, customer reviews and Q&As</p>

性能

形式	Liquid
存放说明	Shipped at 4°C. Store at +4°C short term (1-2 weeks). Upon delivery aliquot. Store at -20°C long term. Avoid freeze / thaw cycle.
存储溶液	pH: 7.00 Preservative: 0.01% Thimerosal (merthiolate) Constituents: 1.21% Tris, 0.75% Glycine, 10% Glycerol (glycerin, glycerine)
纯度	Immunogen affinity purified
克隆	多克隆
同种型	IgG

应用

The Abpromise guarantee **Abpromise™**承诺保证使用ab228668于以下的经测试应用

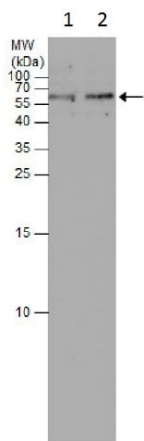
“应用说明”部分 下显示的仅为推荐的起始稀释度;实际最佳的稀释度/浓度应由使用者检定。

应用	Ab评论	说明
WB		1/500 - 1/3000. Predicted molecular weight: 32 kDa.
IHC-P		1/100 - 1/1000.
ICC/IF		1/100 - 1/1000.

靶标

功能	<p>Involved in autophagic vesicle formation. Conjugation with ATG12, through a ubiquitin-like conjugating system involving ATG7 as an E1-like activating enzyme and ATG10 as an E2-like conjugating enzyme, is essential for its function. The ATG12-ATG5 conjugate acts as an E3-like enzyme which is required for lipidation of ATG8 family proteins and their association to the vesicle membranes. Involved in mitochondrial quality control after oxidative damage, and in subsequent cellular longevity. The ATG12-ATG5 conjugate also negatively regulates the innate antiviral immune response by blocking the type I IFN production pathway through direct association with RARRES3 and MAVS. Also plays a role in translation or delivery of incoming viral RNA to the translation apparatus. Plays a critical role in multiple aspects of lymphocyte development and is essential for both B and T lymphocyte survival and proliferation. Required for optimal processing and presentation of antigens for MHC II. Involved in the maintenance of axon morphology and membrane structures, as well as in normal adipocyte differentiation. Promotes primary ciliogenesis through removal of OFD1 from centriolar satellites and degradation of IFT20 via the autophagic pathway.</p> <p>May play an important role in the apoptotic process, possibly within the modified cytoskeleton. Its expression is a relatively late event in the apoptotic process, occurring downstream of caspase activity. Plays a crucial role in IFN-gamma-induced autophagic cell death by interacting with FADD.</p>
组织特异性	Ubiquitous. The mRNA is present at similar levels in viable and apoptotic cells, whereas the protein is dramatically highly expressed in apoptotic cells.
序列相似性	Belongs to the ATG5 family.
翻译后修饰	Conjugated to ATG12; which is essential for autophagy, but is not required for association with isolation membrane. Acetylated by EP300.
细胞定位	Cytoplasm. Preautophagosomal structure membrane. Colocalizes with nonmuscle actin. The conjugate detaches from the membrane immediately before or after autophagosome formation is completed (By similarity). Localizes also to discrete punctae along the ciliary axoneme and to the base of the ciliary axoneme.

图片



Western blot - Anti-APG5L/ATG5 antibody (ab228668)

All lanes : Anti-APG5L/ATG5 antibody (ab228668) at 1/1000 dilution

Lane 1 : Untreated HeLa (human epithelial cell line from cervix adenocarcinoma) whole cell extracts

Lane 2 : HeLa (human epithelial cell line from cervix adenocarcinoma) treated with 50 μ M chloroquine for 24 hours, whole cell extracts

Lysates/proteins at 30 μ g per lane.

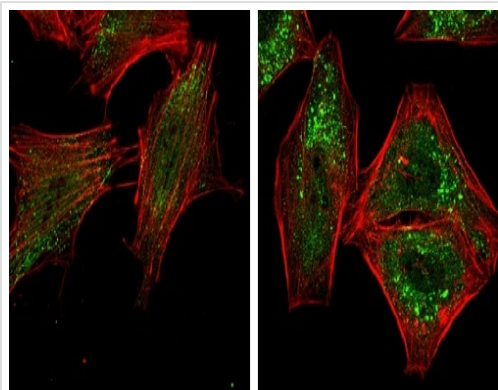
Secondary

All lanes : HRP-conjugated anti-rabbit IgG

Developed using the ECL technique.

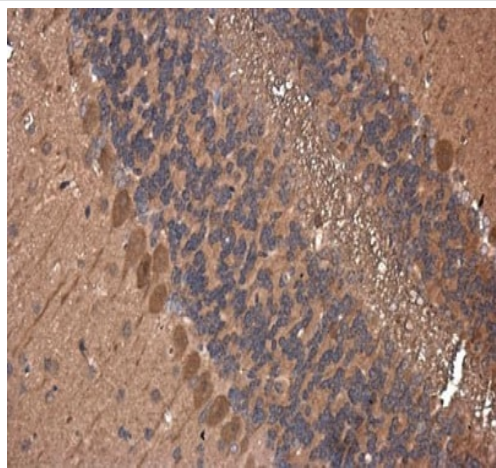
Predicted band size: 32 kDa

15% SDS-PAGE



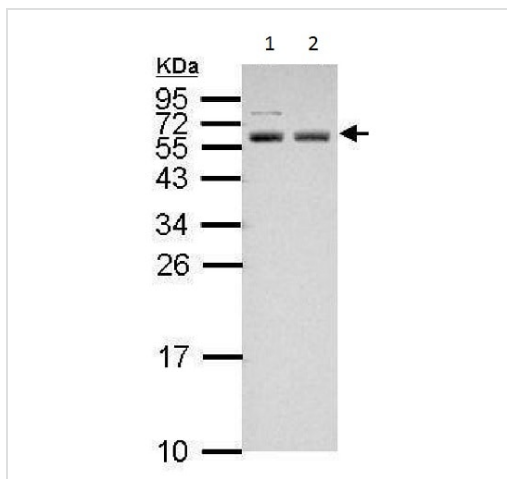
Immunocytochemistry/ Immunofluorescence - Anti-APG5L/ATG5 antibody (ab228668)

HeLa (human epithelial cell line from cervix adenocarcinoma) cells stained for APG5L/ATG5 (green) using ab228668 (1/1000 dilution) in ICC/IF. Cells mock (left panel) and treated with 50 μ M chloroquine for 24 hours (right panel) were fixed in 4% paraformaldehyde at RT for 15 minutes. Counterstain: Phalloidin, an F-actin marker (red).



Immunohistochemistry (Formalin/PFA-fixed paraffin-embedded sections) - Anti-APG5L/ATG5 antibody (ab228668)

Paraffin-embedded mouse brain tissue stained for APG5L/ATG5 with ab228668 at 1/400 dilution in immunohistochemical analysis.



Western blot - Anti-APG5L/ATG5 antibody (ab228668)

All lanes : Anti-APG5L/ATG5 antibody (ab228668) at 1/1000 dilution

Lane 1 : NT2/D1 (human embryonal carcinoma cell line) whole cell lysate

Lane 2 : PC-3 (human prostate adenocarcinoma cell line) whole cell lysate

Lysates/proteins at 30 µg per lane.

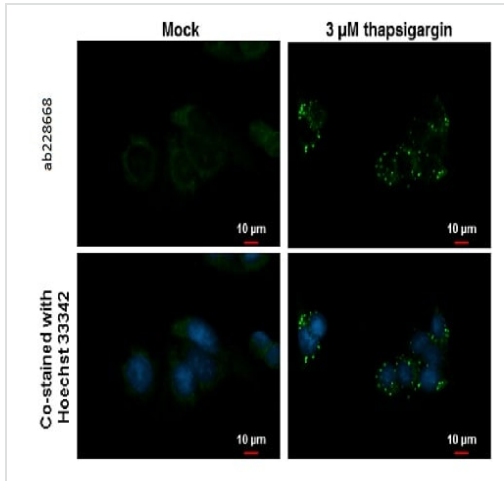
Secondary

All lanes : HRP-conjugated anti-rabbit IgG

Developed using the ECL technique.

Predicted band size: 32 kDa

12% SDS-PAGE



Immunocytochemistry/ Immunofluorescence - Anti-APG5L/ATG5 antibody (ab228668)

HepG2 (human liver hepatocellular carcinoma cell line) cells stained for APG5L/ATG5 (green) using ab228668 (1/500 dilution) in ICC/IF. Cells were treated with 3 μ M thapsigargin 16 hours (right panels) and mock (left panels) and were fixed in ice-cold methanol for 10 minutes, permeabilized with cooled acetone for 2 minutes.

Nuclear counterstain: Hoechst 33342 (blue).

Please note: All products are "FOR RESEARCH USE ONLY. NOT FOR USE IN DIAGNOSTIC PROCEDURES"

Our Abpromise to you: Quality guaranteed and expert technical support

- Replacement or refund for products not performing as stated on the datasheet
- Valid for 12 months from date of delivery
- Response to your inquiry within 24 hours
- We provide support in Chinese, English, French, German, Japanese and Spanish
- Extensive multi-media technical resources to help you
- We investigate all quality concerns to ensure our products perform to the highest standards

If the product does not perform as described on this datasheet, we will offer a refund or replacement. For full details of the Abpromise, please visit <https://www.abcam.cn/abpromise> or contact our technical team.

Terms and conditions

- Guarantee only valid for products bought direct from Abcam or one of our authorized distributors