

### Anti-Apc6 antibody [EPR11168] ab169536

**重组** RabMAb

#### 7 图像

#### 概述

产品名称	Anti-Apc6抗体[EPR11168]
描述	兔单克隆抗体[EPR11168] to Apc6
宿主	Rabbit
经测试应用	<b>适用于:</b> WB, IHC-P, ICC/IF <b>不适用于:</b> Flow Cyt
种属反应性	<b>与反应:</b> Human
免疫原	Synthetic peptide corresponding to Human Apc6.
阳性对照	HT-1080, HepG2 and HeLa cell lysates; Human breast carcinoma, gastric carcinoma and kidney tissues; HeLa cells; Immunoprecipitation pellet from HepG2 cell lysate.
常规说明	<p>This product is a recombinant monoclonal antibody, which offers several advantages including:</p> <ul style="list-style-type: none"> <li>- High batch-to-batch consistency and reproducibility</li> <li>- Improved sensitivity and specificity</li> <li>- Long-term security of supply</li> <li>- Animal-free production</li> </ul> <p>For more information <a href="#">see here</a>.</p> <p>Our RabMAb<sup>®</sup> technology is a patented hybridoma-based technology for making rabbit monoclonal antibodies. For details on our patents, please refer to <a href="#">RabMAb<sup>®</sup> patents</a>.</p> <p>Mouse, Rat: We have preliminary internal testing data to indicate this antibody may not react with these species. Please contact us for more information.</p>

#### 性能

形式	Liquid
存放说明	Shipped at 4°C. Store at +4°C short term (1-2 weeks). Upon delivery aliquot. Store at -20°C long term.
存储溶液	pH: 7.2 Preservative: 0.01% Sodium azide Constituents: 59% PBS, 40% Glycerol (glycerin, glycerine), 0.5% BSA
纯度	Protein A purified

克隆	单克隆
克隆编号	EPR11168
同种型	IgG

应用

The Abpromise guarantee      **Abpromise™**承诺保证使用ab169536于以下的经测试应用

“应用说明”部分 下显示的仅为推荐的起始稀释度;实际最佳的稀释度/浓度应由使用者检定。

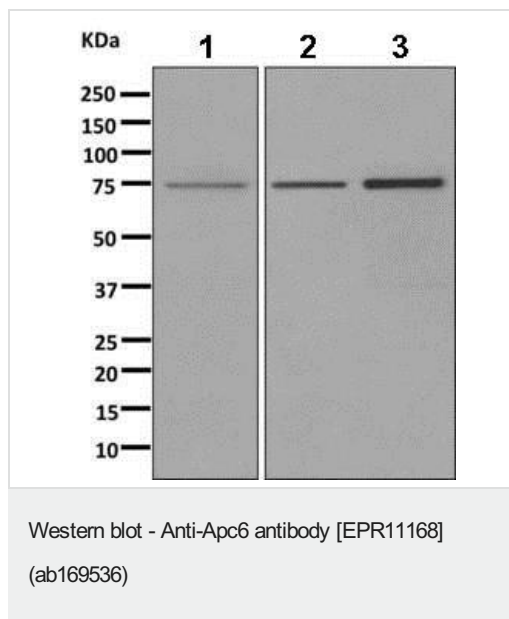
应用	Ab评论	说明
WB		1/1000 - 1/10000. Predicted molecular weight: 71 kDa.
IHC-P		1/50 - 1/100. Perform heat mediated antigen retrieval with citrate buffer pH 6 before commencing with IHC staining protocol.
ICC/IF		1/100 - 1/250.

应用说明      Is unsuitable for Flow Cyt.

靶标

功能	Component of the anaphase promoting complex/cyclosome (APC/C), a cell cycle-regulated E3 ubiquitin ligase that controls progression through mitosis and the G1 phase of the cell cycle. The APC/C complex acts by mediating ubiquitination and subsequent degradation of target proteins: it mainly mediates the formation of 'Lys-11'-linked polyubiquitin chains and, to a lower extent, the formation of 'Lys-48'- and 'Lys-63'-linked polyubiquitin chains.
通路	Protein modification; protein ubiquitination.
序列相似性	Belongs to the APC6/CDC16 family. Contains 7 TPR repeats.
翻译后修饰	Phosphorylated. Phosphorylation on Ser-560 occurs specifically during mitosis.
细胞定位	Cytoplasm > cytoskeleton > centrosome. Cytoplasm > cytoskeleton > spindle. Colocalizes with CDC27 to the centrosome at all stages of the cell cycle and to the mitotic spindle.

图片



**All lanes** : Anti-Apc6 antibody [EPR11168] (ab169536) at 1/1000 dilution

**Lane 1** : HT-1080 cell lysate

**Lane 2** : HepG2 cell lysate

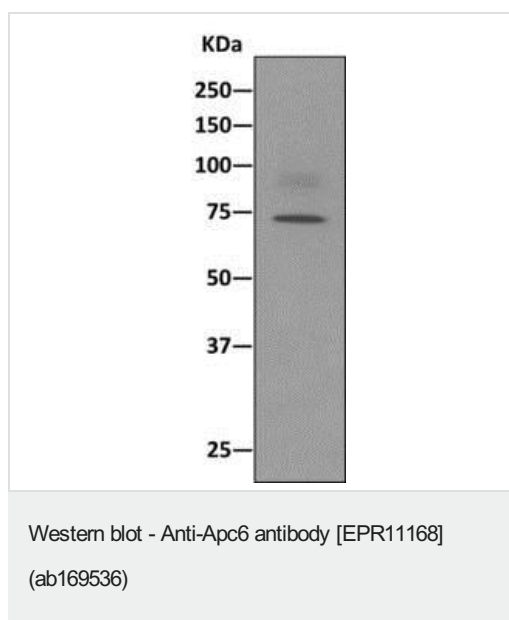
**Lane 3** : HeLa cell lysate

Lysates/proteins at 10 µg per lane.

#### Secondary

**All lanes** : HRP labeled goat anti-rabbit at 1/2000 dilution

**Predicted band size:** 71 kDa

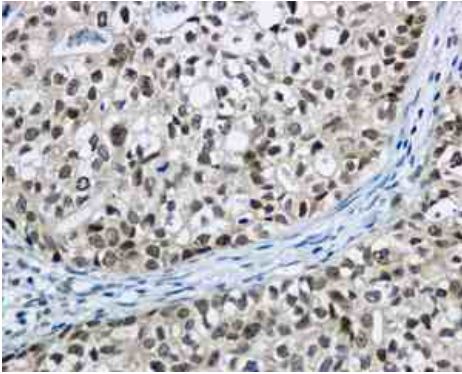


Anti-Apc6 antibody [EPR11168] (ab169536) at 1/1000 dilution + immunoprecipitation pellet from HepG2 cell lysate

#### Secondary

HRP-conjugated anti-rabbit IgG preferentially detecting the non-reduced form of rabbit IgG

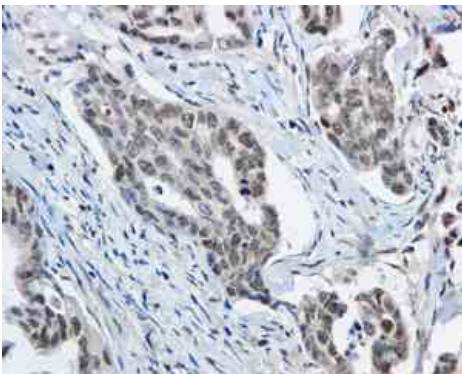
**Predicted band size:** 71 kDa



Immunohistochemistry (Formalin/PFA-fixed paraffin-embedded sections) - Anti-Apc6 antibody  
[EPR11168] (ab169536)

Immunohistochemical analysis of paraffin-embedded Human breast carcinoma tissue labeling Apc6 with ab169536 at 1/50 dilution.

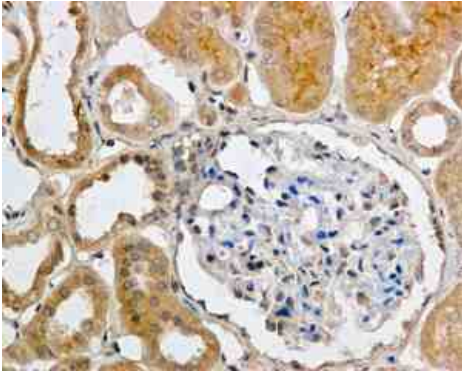
Perform heat mediated antigen retrieval with citrate buffer pH 6 before commencing with IHC staining protocol.



Immunohistochemistry (Formalin/PFA-fixed paraffin-embedded sections) - Anti-Apc6 antibody  
[EPR11168] (ab169536)

Immunohistochemical analysis of paraffin-embedded Human gastric carcinoma tissue labeling Apc6 with ab169536 at 1/50 dilution.

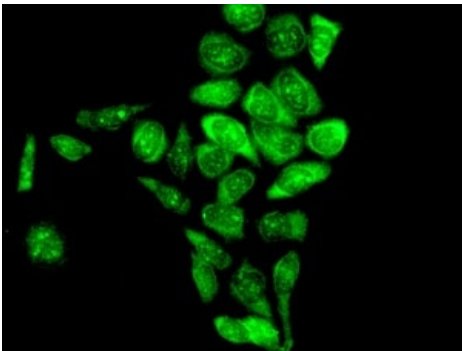
Perform heat mediated antigen retrieval with citrate buffer pH 6 before commencing with IHC staining protocol.



Immunohistochemistry (Formalin/PFA-fixed paraffin-embedded sections) - Anti-Apc6 antibody [EPR11168] (ab169536)

Immunohistochemical analysis of paraffin-embedded Human kidney tissue labeling Apc6 with ab169536 at 1/50 dilution.

Perform heat mediated antigen retrieval with citrate buffer pH 6 before commencing with IHC staining protocol.



Immunocytochemistry/ Immunofluorescence - Anti-Apc6 antibody [EPR11168] (ab169536)

Immunofluorescent analysis of HeLa cells labeling Apc6 with ab169536 at 1/100 dilution.

### Why choose a recombinant antibody?



**Research with confidence**  
Consistent and reproducible results



**Long-term and scalable supply**  
Recombinant technology



**Success from the first experiment**  
Confirmed specificity



**Ethical standards compliant**  
Animal-free production

Anti-Apc6 antibody [EPR11168] (ab169536)

**Please note:** All products are "FOR RESEARCH USE ONLY. NOT FOR USE IN DIAGNOSTIC PROCEDURES"

**Our Abpromise to you: Quality guaranteed and expert technical support**

- Replacement or refund for products not performing as stated on the datasheet
- Valid for 12 months from date of delivery
- Response to your inquiry within 24 hours
- We provide support in Chinese, English, French, German, Japanese and Spanish
- Extensive multi-media technical resources to help you
- We investigate all quality concerns to ensure our products perform to the highest standards

If the product does not perform as described on this datasheet, we will offer a refund or replacement. For full details of the Abpromise, please visit <https://www.abcam.cn/abpromise> or contact our technical team.

#### **Terms and conditions**

---

- Guarantee only valid for products bought direct from Abcam or one of our authorized distributors