

### APC Anti-TRAP/CD40L antibody [24-31] ab134406

#### 1 图像

#### 概述

产品名称	APC Anti-TRAP/CD40L 抗体[24-31]
描述	APC小鼠单克隆抗体[24-31] to TRAP/CD40L
宿主	Mouse
偶联物	APC. Ex: 645nm, Em: 660nm
经测试应用	适用于: Flow Cyt
种属反应性	与反应: Human
免疫原	Fusion protein corresponding to Human TRAP/CD40L. Database link: <a href="#">P29965</a>
阳性对照	Human peripheral blood cells stimulated for 6 hours using Cell Stimulation Cocktail
常规说明	<p>The Life Science industry has been in the grips of a reproducibility crisis for a number of years. Abcam is leading the way in addressing this with our range of recombinant monoclonal antibodies and knockout edited cell lines for gold-standard validation. Please check that this product meets your needs before purchasing.</p> <p>If you have any questions, special requirements or concerns, please send us an inquiry and/or contact our Support team ahead of purchase. Recommended alternatives for this product can be found below, along with publications, customer reviews and Q&amp;As</p>

#### 性能

形式	Liquid
存放说明	Shipped at 4°C. Store at +4°C.
存储溶液	pH: 7.20 Preservative: 0.09% Sodium azide Constituents: PBS, 0.2% BSA
纯度	Protein G purified
克隆	单克隆
克隆编号	24-31
同种型	IgG1
轻链类型	kappa

## 应用

### The Abpromise guarantee

**Abpromise™**承诺保证使用ab134406于以下的经测试应用

“应用说明”部分 下显示的仅为推荐的起始稀释度;实际最佳的稀释度/浓度应由使用者检定。

应用	Ab评论	说明
Flow Cyt		Use 5µl for 10 <sup>6</sup> cells. <b>ab37391</b> - Mouse monoclonal IgG1, is suitable for use as an isotype control with this antibody.

## 靶标

### 功能

Mediates B-cell proliferation in the absence of co-stimulus as well as IgE production in the presence of IL-4. Involved in immunoglobulin class switching.  
Release of soluble CD40L from platelets is partially regulated by GP IIb/IIIa, actin polymerization, and an matrix metalloproteinases (MMP) inhibitor-sensitive pathway.

### 组织特异性

Specifically expressed on activated CD4+ T-lymphocytes.

### 疾病相关

Defects in CD40LG are the cause of X-linked immunodeficiency with hyper-IgM type 1 (HIGM1) [MIM:308230]; also known as X-linked hyper IgM syndrome (XHIM). HIGM1 is an immunoglobulin isotype switch defect characterized by elevated concentrations of serum IgM and decreased amounts of all other isotypes. Affected males present at an early age (usually within the first year of life) recurrent bacterial and opportunistic infections, including Pneumocystis carinii pneumonia and intractable diarrhea due to cryptosporidium infection. Despite substitution treatment with intravenous immunoglobulin, the overall prognosis is rather poor, with a death rate of about 10% before adolescence.

### 序列相似性

Belongs to the tumor necrosis factor family.

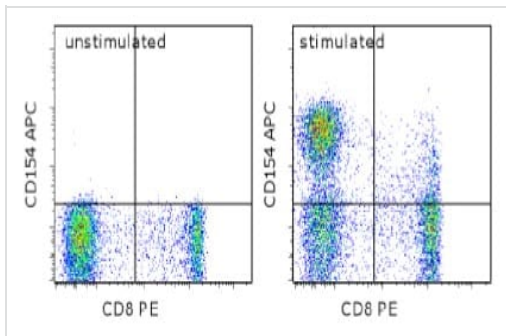
### 翻译后修饰

The soluble form derives from the membrane form by proteolytic processing.  
N-linked glycan is a mixture of high mannose and complex type. Glycan structure does not influence binding affinity to CD40.  
Not O-glycosylated.

### 细胞定位

Secreted and Cell membrane.

## 图片



Flow Cytometry - APC Anti-TRAP/CD40L antibody  
[24-31] (ab134406)

Flow cytometry analysis of unstimulated (left) or stimulated for 6 hours using Cell Stimulation Cocktail (500X) (right) normal Human peripheral blood cells with Anti-Human CD8a PE ab134406 at 5  $\mu$ L (0.5  $\mu$ g/test. Cells in the lymphocyte gate were used for analysis.

**Please note:** All products are "FOR RESEARCH USE ONLY. NOT FOR USE IN DIAGNOSTIC PROCEDURES"

### Our Abpromise to you: Quality guaranteed and expert technical support

- Replacement or refund for products not performing as stated on the datasheet
- Valid for 12 months from date of delivery
- Response to your inquiry within 24 hours
- We provide support in Chinese, English, French, German, Japanese and Spanish
- Extensive multi-media technical resources to help you
- We investigate all quality concerns to ensure our products perform to the highest standards

If the product does not perform as described on this datasheet, we will offer a refund or replacement. For full details of the Abpromise, please visit <https://www.abcam.cn/abpromise> or contact our technical team.

### Terms and conditions

- Guarantee only valid for products bought direct from Abcam or one of our authorized distributors