

APC Anti-PD-L1 antibody [28-8] ab206967

重组 RabMAb

2 图像

概述

产品名称	APC Anti-PD-L1 抗体[28-8]
描述	APC 兔单克隆抗体[28-8] to PD-L1
宿主	Rabbit
偶联物	APC. Ex: 645nm, Em: 660nm
经测试应用	适用于: Flow Cyt
种属反应性	与反应: Human
免疫原	Fusion protein. This information is proprietary to Abcam and/or its suppliers.
阳性对照	Flow Cyt: CHO-PDL1 cells
常规说明	<p>This product is a recombinant monoclonal antibody, which offers several advantages including:</p> <ul style="list-style-type: none">- High batch-to-batch consistency and reproducibility- Improved sensitivity and specificity- Long-term security of supply- Animal-free production <p>For more information see here.</p> <p>Our RabMAb[®] technology is a patented hybridoma-based technology for making rabbit monoclonal antibodies. For details on our patents, please refer to RabMAb[®] patents.</p>

性能

形式	Liquid
存放说明	Shipped at 4°C. Upon delivery aliquot. Store at +4°C. Do Not Freeze. Store In the Dark.
存储溶液	pH: 7.40 Preservative: 0.02% Sodium azide Constituents: PBS, 1% BSA
纯度	Protein A purified
克隆	单克隆
克隆编号	28-8
同种型	IgG

应用

The Abpromise guarantee

Abpromise™承诺保证使用ab206967于以下的经测试应用

“应用说明”部分 下显示的仅为推荐的起始稀释度;实际最佳的稀释度/浓度应由使用者检定。

应用	Ab评论	说明
Flow Cyt		1/500. The cellular localisation of this product has been verified in ICC/IF.

靶标

功能

Involved in the costimulatory signal, essential for T-cell proliferation and production of IL10 and IFNG, in an IL2-dependent and a PDCD1-independent manner. Interaction with PDCD1 inhibits T-cell proliferation and cytokine production.

组织特异性

Highly expressed in the heart, skeletal muscle, placenta and lung. Weakly expressed in the thymus, spleen, kidney and liver. Expressed on activated T- and B-cells, dendritic cells, keratinocytes and monocytes.

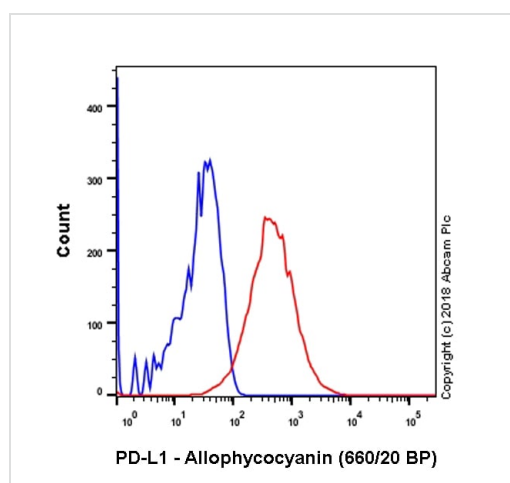
序列相似性

Belongs to the immunoglobulin superfamily. BTN/MOG family.
Contains 1 Ig-like C2-type (immunoglobulin-like) domain.
Contains 1 Ig-like V-type (immunoglobulin-like) domain.

细胞定位

Cell membrane and Endomembrane system.

图片



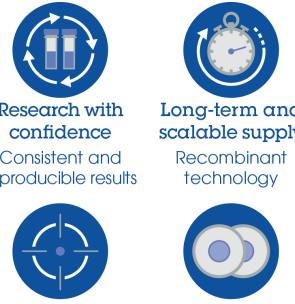
Flow Cytometry - APC Anti-PD-L1 antibody [28-8]
(ab206967)

Overlay histogram showing CHO-S (blue line) and CHO-PD-L1 transfected (red line) cells stained with ab206967.

The cells were incubated in 1x PBS / 10% normal goat serum to block non-specific protein-protein interactions followed by the antibody (ab206967, 1/500 dilution) for 30 min at 22°C.

Acquisition of >5,000 events were collected using a 17 mW red Helium-Neon laser (633nm) and 660/20 bandpass filter.

Why choose a recombinant antibody?



- Research with confidence**
Consistent and reproducible results
- Long-term and scalable supply**
Recombinant technology
- Success from the first experiment**
Confirmed specificity
- Ethical standards compliant**
Animal-free production

APC Anti-PD-L1 antibody [28-8] (ab206967)

Please note: All products are "FOR RESEARCH USE ONLY. NOT FOR USE IN DIAGNOSTIC PROCEDURES"

Our Abpromise to you: Quality guaranteed and expert technical support

- Replacement or refund for products not performing as stated on the datasheet
- Valid for 12 months from date of delivery
- Response to your inquiry within 24 hours
- We provide support in Chinese, English, French, German, Japanese and Spanish
- Extensive multi-media technical resources to help you
- We investigate all quality concerns to ensure our products perform to the highest standards

If the product does not perform as described on this datasheet, we will offer a refund or replacement. For full details of the Abpromise, please visit <https://www.abcam.cn/abpromise> or contact our technical team.

Terms and conditions

- Guarantee only valid for products bought direct from Abcam or one of our authorized distributors