

### Anti-APAF1 antibody ab2000

★★★★★ [2 Abreviews](#) [12 References](#) [2 图像](#)

#### 概述

产品名称	Anti-APAF1抗体
描述	兔多克隆抗体to APAF1
宿主	Rabbit
经测试应用	适用于: IHC-P, WB
种属反应性	与反应: Human
免疫原	Synthetic peptide corresponding to Human APAF1 aa 1158-1177 (C terminal). Sequence: TFYTNGTNLKKIHVSPDFKT

(Peptide available as [ab7872](#))

 [Run BLAST with](#)

 [Run BLAST with](#)

#### 常规说明

The Life Science industry has been in the grips of a reproducibility crisis for a number of years. Abcam is leading the way in addressing this with our range of recombinant monoclonal antibodies and knockout edited cell lines for gold-standard validation. Please check that this product meets your needs before purchasing.

If you have any questions, special requirements or concerns, please send us an inquiry and/or contact our Support team ahead of purchase. Recommended alternatives for this product can be found below, along with publications, customer reviews and Q&As

#### 性能

形式	Liquid
存放说明	Shipped at 4°C. Upon delivery aliquot and store at -20°C or -80°C. Avoid repeated freeze / thaw cycles.
存储溶液	pH: 7.2 Preservative: 0.02% Sodium azide
纯度	Immunogen affinity purified
克隆	多克隆
同种型	IgG

## 应用

**The Abpromise guarantee**      **Abpromise™**承诺保证使用ab2000于以下的经测试应用

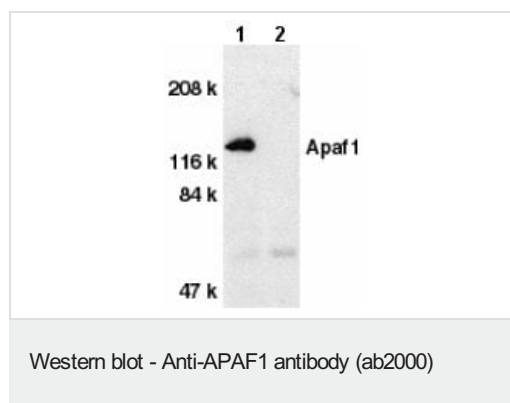
“应用说明”部分 下显示的仅为推荐的起始稀释度;实际最佳的稀释度/浓度应由使用者检定。

应用	Ab评论	说明
IHC-P	★★★★☆ (1)	Use a concentration of 20 µg/ml.
WB	★★★★★ (1)	1/500 - 1/2000. Predicted molecular weight: 130 kDa.

## 靶标

<b>功能</b>	Oligomeric Apaf-1 mediates the cytochrome c-dependent autocatalytic activation of pro-caspase-9 (Apaf-3), leading to the activation of caspase-3 and apoptosis. This activation requires ATP. Isoform 6 is less effective in inducing apoptosis.
<b>组织特异性</b>	Ubiquitous. Highest levels of expression in adult spleen and peripheral blood leukocytes, and in fetal brain, kidney and lung. Isoform 1 is expressed in heart, kidney and liver.
<b>序列相似性</b>	Contains 1 CARD domain. Contains 1 NB-ARC domain. Contains 13 WD repeats.
<b>结构域</b>	The CARD domain mediates interaction with APIP.
<b>细胞定位</b>	Cytoplasm.

## 图片



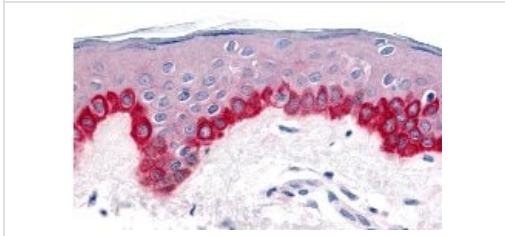
**All lanes :** Anti-APAF1 antibody (ab2000) at 1 µg/ml

**Lane 1 :** Human heart tissue lysate with absence of blocking peptide

**Lane 2 :** Human heart tissue lysate with presence of blocking peptide

**Predicted band size:** 130 kDa

**Observed band size:** 130 kDa



Immunohistochemistry of Apaf1 in human skin tissue with Apaf1 antibody at 20 µg/ml.

Immunohistochemistry (Formalin/PFA-fixed paraffin-embedded sections) - Anti-APAF1 antibody (ab2000)

**Please note:** All products are "FOR RESEARCH USE ONLY. NOT FOR USE IN DIAGNOSTIC PROCEDURES"

### Our Abpromise to you: Quality guaranteed and expert technical support

---

- Replacement or refund for products not performing as stated on the datasheet
- Valid for 12 months from date of delivery
- Response to your inquiry within 24 hours
- We provide support in Chinese, English, French, German, Japanese and Spanish
- Extensive multi-media technical resources to help you
- We investigate all quality concerns to ensure our products perform to the highest standards

If the product does not perform as described on this datasheet, we will offer a refund or replacement. For full details of the Abpromise, please visit <https://www.abcam.cn/abpromise> or contact our technical team.

### Terms and conditions

---

- Guarantee only valid for products bought direct from Abcam or one of our authorized distributors