

Anti-Annexin-2/ANXA2 antibody ab235939

[3 References](#) [8 图像](#)

概述

产品名称	Anti-Annexin-2/ANXA2抗体
描述	兔多克隆抗体to Annexin-2/ANXA2
宿主	Rabbit
经测试应用	适用于: WB, IP, IHC-P, ICC/IF
种属反应性	与反应: Mouse, Human 预测可用于: Rat, Sheep, Guinea pig, Cow, Dog, Orangutan 
免疫原	Recombinant full length protein corresponding to Human Annexin-2/ANXA2 aa 1 to the C-terminus. Database link: P07355 Run BLAST with Run BLAST with
阳性对照	WB: K562, HeLa, HEK-293, NIH/3T3, MCF7, A549, PC-3 and U-251 MG whole cell lysates; Mouse lung, liver and kidney tissue lysates. IHC-P: Human lung, placenta, liver cancer, and colon cancer tissues. ICC/IF: HeLa cells. IP: HeLa whole cell lysate (ab150035).
常规说明	<p>The Life Science industry has been in the grips of a reproducibility crisis for a number of years. Abcam is leading the way in addressing this with our range of recombinant monoclonal antibodies and knockout edited cell lines for gold-standard validation. Please check that this product meets your needs before purchasing.</p> <p>If you have any questions, special requirements or concerns, please send us an inquiry and/or contact our Support team ahead of purchase. Recommended alternatives for this product can be found below, along with publications, customer reviews and Q&As</p>

性能

形式	Liquid
存放说明	Shipped at 4°C. Store at +4°C short term (1-2 weeks). Upon delivery aliquot. Store at -20°C long term. Avoid freeze / thaw cycle.
存储溶液	pH: 7.40 Preservative: 0.03% Proclin 300 Constituents: PBS, 50% Glycerol (glycerin, glycerine)
纯度	Protein G purified
纯化说明	Purity >95%.

克隆 多克隆
同种型 IgG

应用

The Abpromise guarantee **Abpromise™**承诺保证使用ab235939于以下的经测试应用

“应用说明”部分 下显示的仅为推荐的起始稀释度;实际最佳的稀释度/浓度应由使用者检定。

应用	Ab评论	说明
WB		1/500 - 1/5000. Predicted molecular weight: 39 kDa.
IP		1/200 - 1/2000.
IHC-P		1/20 - 1/200.
ICC/IF		1/50 - 1/200.

靶标

功能 Calcium-regulated membrane-binding protein whose affinity for calcium is greatly enhanced by anionic phospholipids. It binds two calcium ions with high affinity. May be involved in heat-stress response.

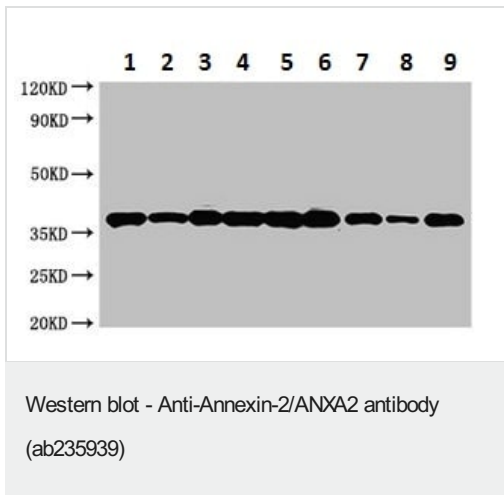
序列相似性 Belongs to the annexin family.
Contains 4 annexin repeats.

结构域 A pair of annexin repeats may form one binding site for calcium and phospholipid.

翻译后修饰 Phosphorylation of Tyr-24 enhances heat stress-induced translocation to the cell surface.
ISGylated.

细胞定位 Secreted > extracellular space > extracellular matrix > basement membrane. Melanosome. In the lamina beneath the plasma membrane. Identified by mass spectrometry in melanosome fractions from stage I to stage IV. Translocated from the cytoplasm to the cell surface through a Golgi-independent mechanism.

图片



All lanes : Anti-Annexin-2/ANXA2 antibody (ab235939) at 1/500 dilution

Lane 1 : HeLa (human epithelial cell line from cervix adenocarcinoma) whole cell lysate

Lane 2 : K562 (human chronic myelogenous leukemia cell line from bone marrow) whole cell lysate

Lane 3 : NIH/3T3 (mouse embryo fibroblast cell line) whole cell lysate

Lane 4 : A549 (human lung carcinoma cell line) whole cell lysate

Lane 5 : PC-3 (human prostate adenocarcinoma cell line) whole cell lysate

Lane 6 : U-251 MG (human brain glioma cell line) whole cell lysate

Lane 7 : Mouse lung tissue lysate

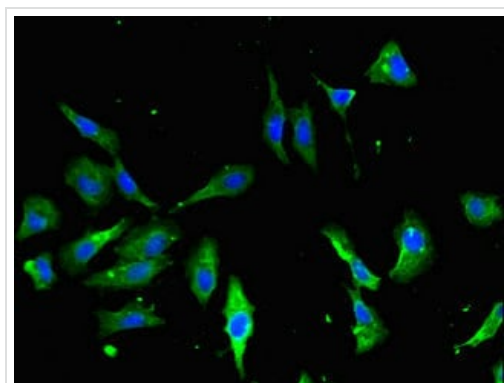
Lane 8 : Mouse liver tissue lysate

Lane 9 : Mouse kidney tissue lysate

Secondary

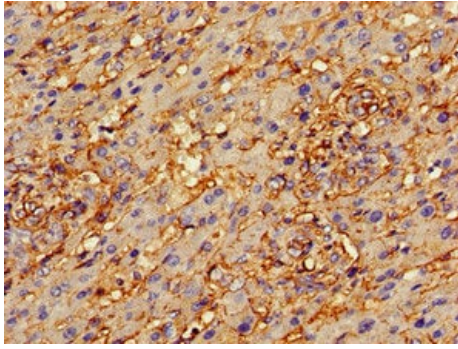
All lanes : Goat polyclonal to rabbit IgG at 1/50000 dilution

Predicted band size: 39 kDa



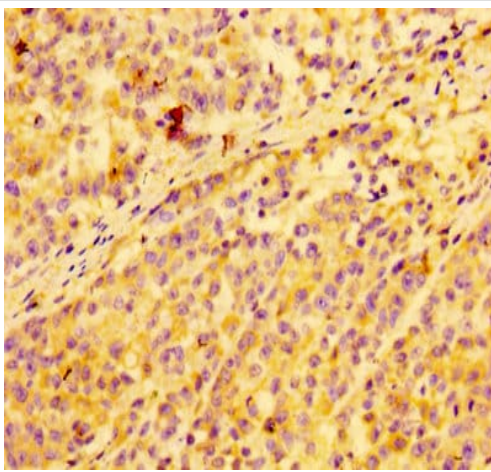
HeLa (human epithelial cell line from cervix adenocarcinoma) cells labeling Annexin-2/ANXA2 (green) using ab235939 at 1/100 dilution in ICC/IF, followed by Alexa Fluor 488[®] conjugated Goat Anti-Rabbit IgG (H+L).

Immunocytochemistry/ Immunofluorescence - Anti-Annexin-2/ANXA2 antibody (ab235939)



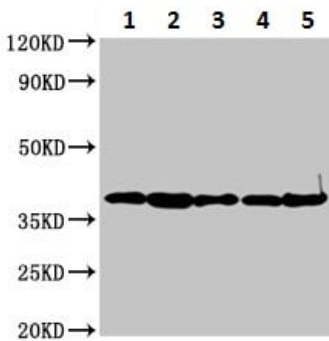
Immunohistochemistry (Formalin/PFA-fixed paraffin-embedded sections) - Anti-Annexin-2/ANXA2 antibody (ab235939)

Paraffin-embedded human liver cancer tissue stained for Annexin-2/ANXA2 using ab235939 at 1/100 dilution in immunohistochemical analysis.



Immunohistochemistry (Formalin/PFA-fixed paraffin-embedded sections) - Anti-Annexin-2/ANXA2 antibody (ab235939)

Paraffin-embedded human colon cancer tissue stained for Annexin-2/ANXA2 using ab235939 at 1/100 dilution in immunohistochemical analysis.



Western blot - Anti-Annexin-2/ANXA2 antibody (ab235939)

All lanes : Anti-Annexin-2/ANXA2 antibody (ab235939) at 1/500 dilution

Lane 1 : K562 (human chronic myelogenous leukemia cell line from bone marrow) whole cell lysate

Lane 2 : HeLa (human epithelial cell line from cervix adenocarcinoma) whole cell lysate

Lane 3 : HEK-293 (human epithelial cell line from embryonic kidney) whole cell lysate

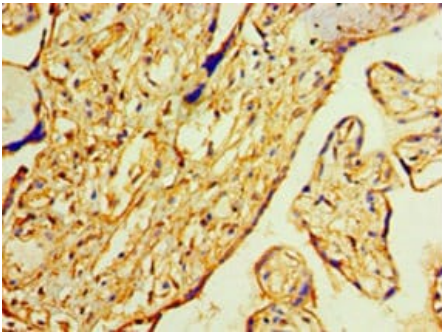
Lane 4 : NIH/3T3 (mouse embryo fibroblast cell line) whole cell lysate

Lane 5 : MCF7 (human breast adenocarcinoma cell line) whole cell lysate

Secondary

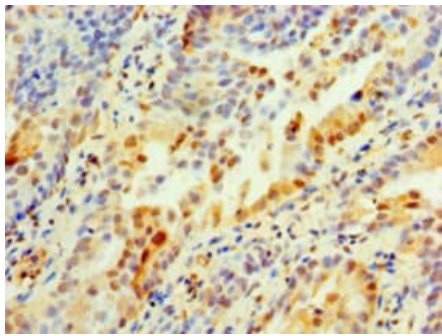
All lanes : Goat polyclonal to rabbit IgG at 1/50000 dilution

Predicted band size: 39 kDa



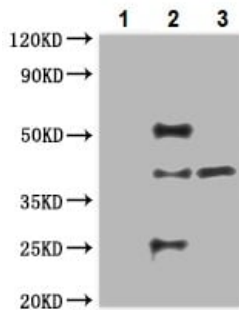
Immunohistochemistry (Formalin/PFA-fixed paraffin-embedded sections) - Anti-Annexin-2/ANXA2 antibody (ab235939)

Paraffin-embedded human placenta tissue stained for Annexin-2/ANXA2 using ab235939 at 1/100 dilution in immunohistochemical analysis.



Immunohistochemistry (Formalin/PFA-fixed paraffin-embedded sections) - Anti-Annexin-2/ANXA2 antibody (ab235939)

Paraffin-embedded human lung tissue stained for Annexin-2/ANXA2 using ab235939 at 1/100 dilution in immunohistochemical analysis.



Immunoprecipitation - Anti-Annexin-2/ANXA2 antibody (ab235939)

Annexin-2/ANXA2 was immunoprecipitated from 500 μ g HeLa (human epithelial cell line from cervix adenocarcinoma) whole cell lysate. For western blotting, an HRP-conjugated Protein G antibody was used as the secondary antibody at 1/2000 dilution.

Lane 1: Rabbit monoclonal IgG (1 μ g) instead of ab235939 in HeLa whole cell lysate.

Lane 2: ab235939 IP in HeLa whole cell lysate.

Lane 3: HeLa whole cell lysate (20 μ g) (input).

Our Abpromise to you: Quality guaranteed and expert technical support

- Replacement or refund for products not performing as stated on the datasheet
- Valid for 12 months from date of delivery
- Response to your inquiry within 24 hours

- We provide support in Chinese, English, French, German, Japanese and Spanish
- Extensive multi-media technical resources to help you
- We investigate all quality concerns to ensure our products perform to the highest standards

If the product does not perform as described on this datasheet, we will offer a refund or replacement. For full details of the Abpromise, please visit <https://www.abcam.cn/abpromise> or contact our technical team.

Terms and conditions

- Guarantee only valid for products bought direct from Abcam or one of our authorized distributors