


Anti-ANKRD1 antibody ab64963

3 References 1 图像

概述

产品名称	Anti-ANKRD1抗体
描述	兔多克隆抗体to ANKRD1
宿主	Rabbit
经测试应用	适用于: WB
种属反应性	与反应: Human 预测可用于: Mouse 
免疫原	Synthetic peptide (Human) from an internal region
常规说明	<p>The Life Science industry has been in the grips of a reproducibility crisis for a number of years. Abcam is leading the way in addressing this with our range of recombinant monoclonal antibodies and knockout edited cell lines for gold-standard validation. Please check that this product meets your needs before purchasing.</p> <p>If you have any questions, special requirements or concerns, please send us an inquiry and/or contact our Support team ahead of purchase. Recommended alternatives for this product can be found below, along with publications, customer reviews and Q&amp;As</p>

性能

形式	Liquid
存放说明	Shipped at 4°C. Store at -20°C. Stable for 12 months at -20°C.
存储溶液	pH: 7.40 Preservative: 0.02% Sodium azide Constituents: PBS, 50% Glycerol (glycerin, glycerine), 0.87% Sodium chloride
纯度	Immunogen affinity purified
克隆	多克隆
同种型	IgG

应用

The Abpromise guarantee      Abpromise™承诺保证使用ab64963于以下的经测试应用

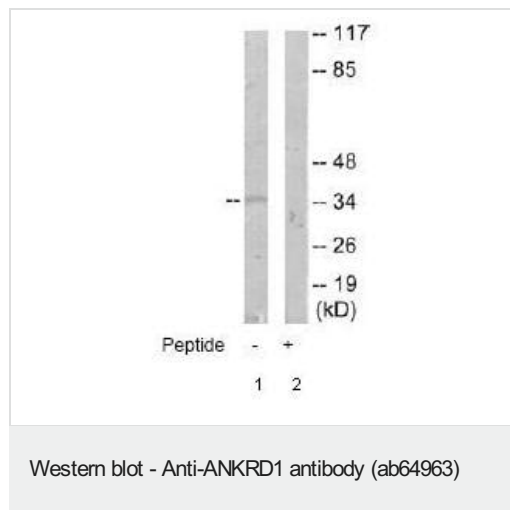
“应用说明”部分 下显示的仅为推荐的起始稀释度;实际最佳的稀释度/浓度应由使用者检定。

应用	Ab评论	说明
WB		1/500 - 1/1000. Detects a band of approximately 36 kDa (predicted molecular weight: 36 kDa).

## 靶标

功能	May play an important role in endothelial cell activation. May act as a nuclear transcription factor that negatively regulates the expression of cardiac genes. Induction seems to be correlated with apoptotic cell death in hepatoma cells.
组织特异性	Mainly expressed in activated vascular endothelial cells. To a lower extent, also expressed in hepatoma cells.
疾病相关	Defects in ANKRD1 may be a cause of total anomalous pulmonary venous return (TAPVR) [MIM:106700]. TAPVR is a rare congenital heart disease (CHD) in which the pulmonary veins fail to connect to the left atrium during cardiac development, draining instead into either the right atrium or one of its venous tributaries. This disease accounts for 1.5% of all CHDs and has a prevalence of approximately 1 out of 15'000 live births.
序列相似性	Contains 5 ANK repeats.
细胞定位	Nucleus.

## 图片



**All lanes :** Anti-ANKRD1 antibody (ab64963) at 1/500 dilution

**Lane 1 :** COLO205 cell extract

**Lane 2 :** COLO205 cell extract with immunising peptide at 5 µg

Lysates/proteins at 5 µg per lane.

**Predicted band size:** 36 kDa

**Observed band size:** 36 kDa

**Please note:** All products are "FOR RESEARCH USE ONLY. NOT FOR USE IN DIAGNOSTIC PROCEDURES"

## Our Abpromise to you: Quality guaranteed and expert technical support

- Replacement or refund for products not performing as stated on the datasheet
- Valid for 12 months from date of delivery
- Response to your inquiry within 24 hours
- We provide support in Chinese, English, French, German, Japanese and Spanish

- Extensive multi-media technical resources to help you
- We investigate all quality concerns to ensure our products perform to the highest standards

If the product does not perform as described on this datasheet, we will offer a refund or replacement. For full details of the Abpromise, please visit <https://www.abcam.cn/abpromise> or contact our technical team.

#### **Terms and conditions**

---

- Guarantee only valid for products bought direct from Abcam or one of our authorized distributors