

Anti-Amphiregulin antibody ab224350

1 [References](#) **4** [图像](#)

概述

产品名称	Anti-Amphiregulin抗体
描述	兔多克隆抗体to Amphiregulin
宿主	Rabbit
经测试应用	适用于: IHC-P
种属反应性	与反应: Human
免疫原	Recombinant fragment corresponding to Human Amphiregulin aa 1-200. Database link: P15514
	 Run BLAST with  Run BLAST with
阳性对照	IHC-P: Human placenta tissue.
常规说明	<p>The Life Science industry has been in the grips of a reproducibility crisis for a number of years. Abcam is leading the way in addressing this with our range of recombinant monoclonal antibodies and knockout edited cell lines for gold-standard validation. Please check that this product meets your needs before purchasing.</p> <p>If you have any questions, special requirements or concerns, please send us an inquiry and/or contact our Support team ahead of purchase. Recommended alternatives for this product can be found below, along with publications, customer reviews and Q&As</p>

性能

形式	Liquid
存放说明	Shipped at 4°C. Store at +4°C short term (1-2 weeks). Upon delivery aliquot. Store at -20°C long term. Avoid freeze / thaw cycle.
存储溶液	pH: 7.20 Preservative: 0.02% Sodium azide Constituents: 40% Glycerol (glycerin, glycerine), PBS
纯度	Immunogen affinity purified
克隆	多克隆
同种型	IgG

应用

The Abpromise guarantee

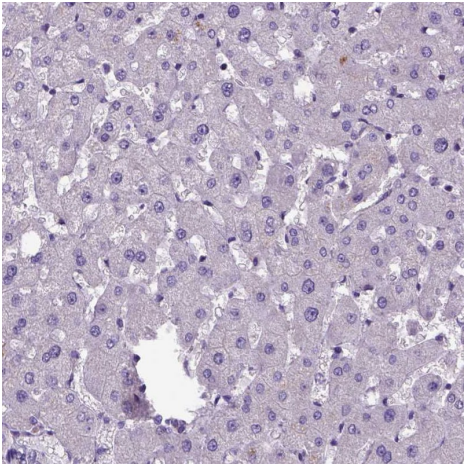
Abpromise™承诺保证使用ab224350于以下的经测试应用

“应用说明”部分 下显示的仅为推荐的起始稀释度;实际最佳的稀释度/浓度应由使用者检定。

应用	Ab评论	说明
IHC-P		1/500 - 1/1000. Perform heat mediated antigen retrieval with citrate buffer pH 6 before commencing with IHC staining protocol.

靶标	
功能	Bifunctional growth-modulating glycoprotein. Inhibits growth of several human carcinoma cells in culture and stimulates proliferation of human fibroblasts and certain other tumor cells.
序列相似性	Belongs to the amphiregulin family. Contains 1 EGF-like domain.
细胞定位	Membrane.

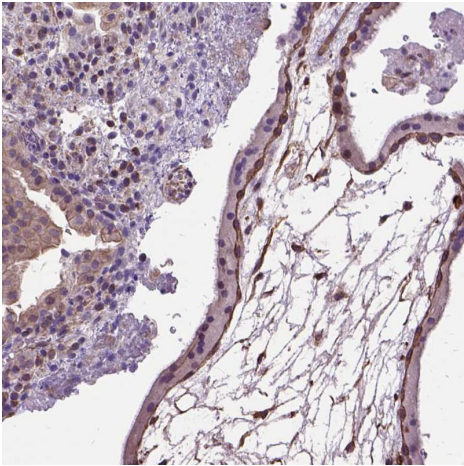
图片



Paraffin-embedded human liver stained for Amphiregulin using ab224350 at 1/500 dilution in immunohistochemical analysis.

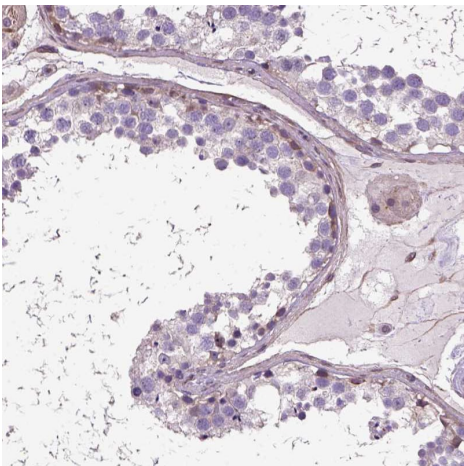
Shows no positivity in hepatocytes cells.

Immunohistochemistry (Formalin/PFA-fixed paraffin-embedded sections) - Anti-Amphiregulin antibody (ab224350)



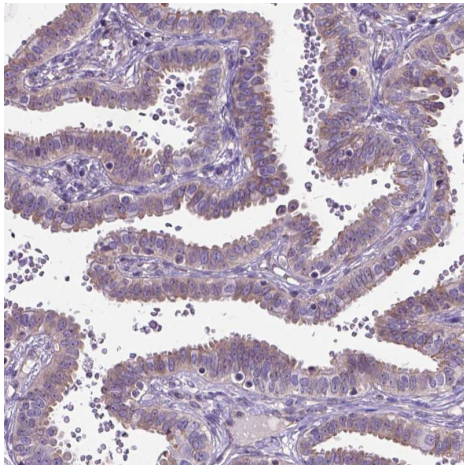
Paraffin-embedded human placenta stained for Amphiregulin using ab224350 at 1/500 dilution in immunohistochemical analysis. Shows moderate cytoplasmic and membranous positivity in trophoblastic cells.

Immunohistochemistry (Formalin/PFA-fixed paraffin-embedded sections) - Anti-Amphiregulin antibody (ab224350)



Paraffin-embedded human testis stained for Amphiregulin using ab224350 at 1/500 dilution in immunohistochemical analysis. Shows weak cytoplasmic and membranous positivity in cells in seminiferous ducts.

Immunohistochemistry (Formalin/PFA-fixed paraffin-embedded sections) - Anti-Amphiregulin antibody (ab224350)



Immunohistochemistry (Formalin/PFA-fixed paraffin-embedded sections) - Anti-Amphiregulin antibody (ab224350)

Paraffin-embedded human Fallopian tube stained for Amphiregulin using ab224350 at 1/500 dilution in immunohistochemical analysis. Shows moderate cytoplasmic and membranous positivity in glandular cells.

Please note: All products are "FOR RESEARCH USE ONLY. NOT FOR USE IN DIAGNOSTIC PROCEDURES"

Our Abpromise to you: Quality guaranteed and expert technical support

- Replacement or refund for products not performing as stated on the datasheet
- Valid for 12 months from date of delivery
- Response to your inquiry within 24 hours
- We provide support in Chinese, English, French, German, Japanese and Spanish
- Extensive multi-media technical resources to help you
- We investigate all quality concerns to ensure our products perform to the highest standards

If the product does not perform as described on this datasheet, we will offer a refund or replacement. For full details of the Abpromise, please visit <https://www.abcam.cn/abpromise> or contact our technical team.

Terms and conditions

- Guarantee only valid for products bought direct from Abcam or one of our authorized distributors