

Anti-AMBRA1 antibody ab223351

2 图像

概述

产品名称	Anti-AMBRA1抗体
描述	兔多克隆抗体to AMBRA1
宿主	Rabbit
经测试应用	适用于: WB, ICC/IF
种属反应性	与反应: Rat, Human
免疫原	Synthetic peptide within Human AMBRA1 aa 200-300 (internal sequence). The exact sequence is proprietary. Database link: Q9C0C7
阳性对照	WB: Rat brain lysate. ICC/IF: SK-N-BE cells.
常规说明	<p>The Life Science industry has been in the grips of a reproducibility crisis for a number of years. Abcam is leading the way in addressing this with our range of recombinant monoclonal antibodies and knockout edited cell lines for gold-standard validation. Please check that this product meets your needs before purchasing.</p> <p>If you have any questions, special requirements or concerns, please send us an inquiry and/or contact our Support team ahead of purchase. Recommended alternatives for this product can be found below, along with publications, customer reviews and Q&As</p>

性能

形式	Liquid
存放说明	Shipped at 4°C. Store at +4°C short term (1-2 weeks). Upon delivery aliquot. Store at -20°C long term. Avoid freeze / thaw cycle.
存储溶液	Preservative: 0.09% Sodium azide Constituents: 50% Glycerol (glycerin, glycerine), PBS
纯度	Immunogen affinity purified
克隆	多克隆
同种型	IgG

应用

The Abpromise guarantee

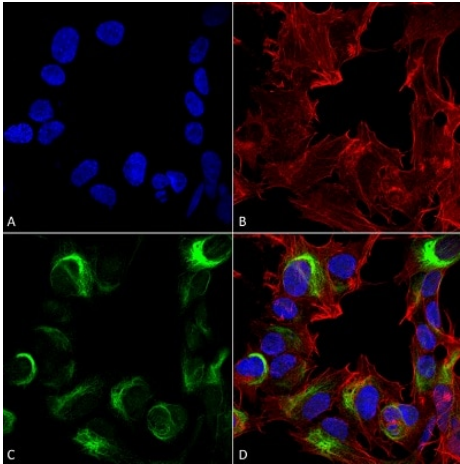
Abpromise™承诺保证使用ab223351于以下的经测试应用

“应用说明”部分 下显示的仅为推荐的起始稀释度;实际最佳的稀释度/浓度应由使用者检定。

应用	Ab评论	说明
WB		1/1000. Predicted molecular weight: 143 kDa.
ICC/IF		1/100.

靶标	
功能	Regulates autophagy and development of the nervous system. Involved in autophagy in controlling protein turnover during neuronal development, and in regulating normal cell survival and proliferation.
序列相似性	Contains 3 WD repeats.
细胞定位	Cytoplasmic vesicle > autophagosome.

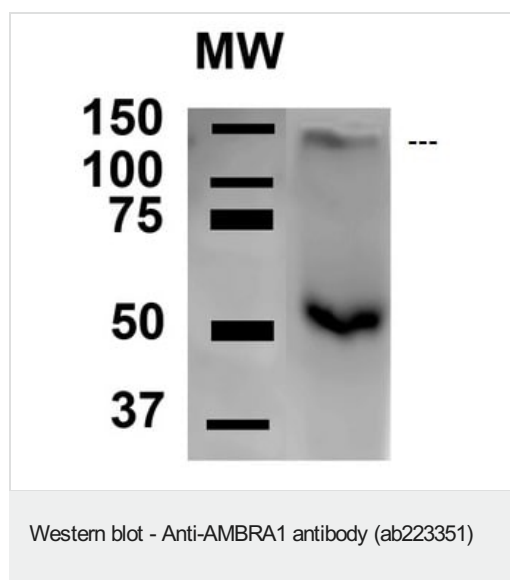
图片



4% formaldehyde fixed SK-N-BE cells stained for AMBRA1 (green) using ab223351 at 1/100 dilution in ICC/IF. Secondary: Goat Anti-Rabbit ATTO 488 at 1/200 for 60 minutes at RT. Counterstain: Phalloidin Texas Red F-Actin stain; DAPI (blue) nuclear stain at 1/1000, 1/5000 for 60 minutes RT, 5 minutes RT.

(A) DAPI nuclear stain (B) Phalloidin Texas Red F-Actin stain (C) ab223351 (D) Merge.

Immunocytochemistry/ Immunofluorescence - Anti-AMBRA1 antibody (ab223351)



Anti-AMBRA1 antibody (ab223351) at 1/1000 dilution + Rat brain lysate at 15 µg

Secondary

Goat Anti-Rabbit HRP at 1/2000 dilution

Developed using the ECL technique.

Predicted band size: 143 kDa

Exposure time: 6 minutes

Blocking: 5% skimmed milk in 1X TBST.

Please note: All products are "FOR RESEARCH USE ONLY. NOT FOR USE IN DIAGNOSTIC PROCEDURES"

Our Abpromise to you: Quality guaranteed and expert technical support

- Replacement or refund for products not performing as stated on the datasheet
- Valid for 12 months from date of delivery
- Response to your inquiry within 24 hours
- We provide support in Chinese, English, French, German, Japanese and Spanish
- Extensive multi-media technical resources to help you
- We investigate all quality concerns to ensure our products perform to the highest standards

If the product does not perform as described on this datasheet, we will offer a refund or replacement. For full details of the Abpromise, please visit <https://www.abcam.cn/abpromise> or contact our technical team.

Terms and conditions

- Guarantee only valid for products bought direct from Abcam or one of our authorized distributors