

### Anti-ALX3 antibody ab64985

★★★★★ [1 Abreviews](#) [4 References](#) [2 图像](#)

#### 概述

产品名称	Anti-ALX3抗体
描述	兔多克隆抗体to ALX3
宿主	Rabbit
经测试应用	适用于: WB, ICC/IF
种属反应性	与反应: Human 预测可用于: Mouse, Rat 
免疫原	Synthetic peptide corresponding to Human ALX3 aa 150-250 (internal sequence). Database link: <a href="#">O95076</a>
阳性对照	293 cell extract and HeLa cells
常规说明	<p>The Life Science industry has been in the grips of a reproducibility crisis for a number of years. Abcam is leading the way in addressing this with our range of recombinant monoclonal antibodies and knockout edited cell lines for gold-standard validation. Please check that this product meets your needs before purchasing.</p> <p>If you have any questions, special requirements or concerns, please send us an inquiry and/or contact our Support team ahead of purchase. Recommended alternatives for this product can be found below, along with publications, customer reviews and Q&amp;As</p>

#### 性能

形式	Liquid
存放说明	Shipped at 4°C. Store at -20°C. Stable for 12 months at -20°C.
存储溶液	pH: 7.40 Preservative: 0.02% Sodium azide Constituents: PBS, 50% Glycerol (glycerin, glycerine), 0.87% Sodium chloride
纯度	Without Mg <sup>2+</sup> and Ca <sup>2+</sup>
克隆	Immunogen affinity purified
同种型	多克隆 IgG

应用

The Abpromise guarantee      **Abpromise™**承诺保证使用ab64985于以下的经测试应用

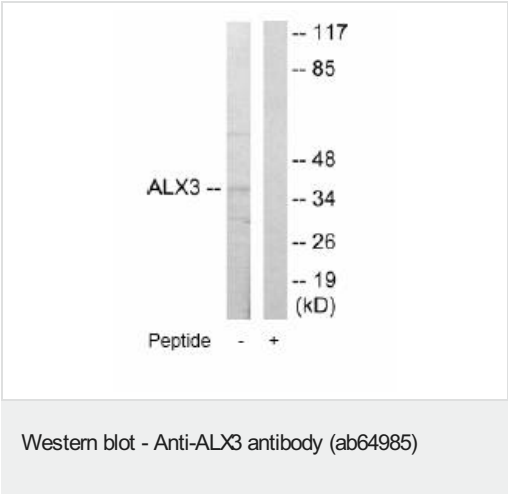
“应用说明”部分 下显示的仅为推荐的起始稀释度;实际最佳的稀释度/浓度应由使用者检定。

应用	Ab评论	说明
WB		1/500 - 1/1000. Detects a band of approximately 37 kDa (predicted molecular weight: 37 kDa).
ICC/IF		1/500 - 1/1000.

靶标

相关性	ALX3 (aristaless-like homeobox 3) is a nuclear protein with a homeobox DNA-binding domain. It functions as a transcriptional regulator with a possible role in patterning of the mesoderm during development. Preferential methylation of the ALX3 promoter is associated with advanced-stage neuroblastoma tumors.
细胞定位	Nuclear

图片



**All lanes :** Anti-ALX3 antibody (ab64985) at 1/500 dilution

**Lane 1 :** 293 cell extract

**Lane 2 :** 293 cell extract with immunising peptide at 10 µg

Lysates/proteins at 30 µg per lane.

**Predicted band size:** 37 kDa

**Observed band size:** 37 kDa

**Additional bands at:** 60 kDa. We are unsure as to the identity of these extra bands.



Immunofluorescence analysis of HeLa cells, using ab64985 at 1/500-1/1000 dilution. Right hand panel was also treated with immunising peptide.

**Please note:** All products are "FOR RESEARCH USE ONLY. NOT FOR USE IN DIAGNOSTIC PROCEDURES"

### Our Abpromise to you: Quality guaranteed and expert technical support

---

- Replacement or refund for products not performing as stated on the datasheet
- Valid for 12 months from date of delivery
- Response to your inquiry within 24 hours
- We provide support in Chinese, English, French, German, Japanese and Spanish
- Extensive multi-media technical resources to help you
- We investigate all quality concerns to ensure our products perform to the highest standards

If the product does not perform as described on this datasheet, we will offer a refund or replacement. For full details of the Abpromise, please visit <https://www.abcam.cn/abpromise> or contact our technical team.

### Terms and conditions

---

- Guarantee only valid for products bought direct from Abcam or one of our authorized distributors