

Anti-Alpha-synuclein antibody ab131508

[4 References](#) [2 图像](#)

概述

产品名称	Anti-Alpha-synuclein抗体
描述	兔多克隆抗体to Alpha-synuclein
宿主	Rabbit
特异性	This antibody detects endogenous levels of total alpha Synuclein. Due to 72.7% sequence homology ab131508 might react with Beta synuclein
经测试应用	适用于: WB, ICC/IF
种属反应性	与反应: Mouse, Human
免疫原	Synthetic peptide. This information is proprietary to Abcam and/or its suppliers.
阳性对照	HeLa cells and 3T3 cell extracts.
常规说明	<p>The Life Science industry has been in the grips of a reproducibility crisis for a number of years. Abcam is leading the way in addressing this with our range of recombinant monoclonal antibodies and knockout edited cell lines for gold-standard validation. Please check that this product meets your needs before purchasing.</p> <p>If you have any questions, special requirements or concerns, please send us an inquiry and/or contact our Support team ahead of purchase. Recommended alternatives for this product can be found below, along with publications, customer reviews and Q&As</p>

性能

形式	Liquid
存放说明	Shipped at 4°C. Store at -20°C. Stable for 12 months at -20°C.
存储溶液	pH: 7.40 Preservative: 0.02% Sodium azide Constituents: 48% PBS, 50% Glycerol (glycerin, glycerine), 0.88% Sodium chloride
纯度	PBS without Mg ²⁺ and Ca ²⁺ Immunogen affinity purified
克隆	多克隆
同种型	IgG

应用

The Abpromise guarantee

Abpromise™ 承诺保证使用 ab131508 于以下的经测试应用

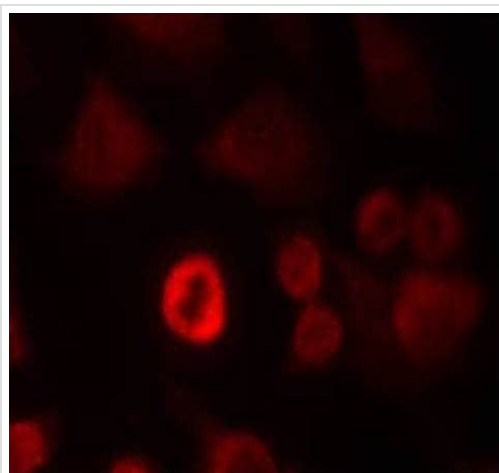
“应用说明”部分下显示的仅为推荐的起始稀释度；实际最佳的稀释度/浓度应由使用者检定。

应用	Ab评论	说明
WB		1/500 - 1/1000. Predicted molecular weight: 14 kDa.
ICC/IF		1/100 - 1/200.

靶标

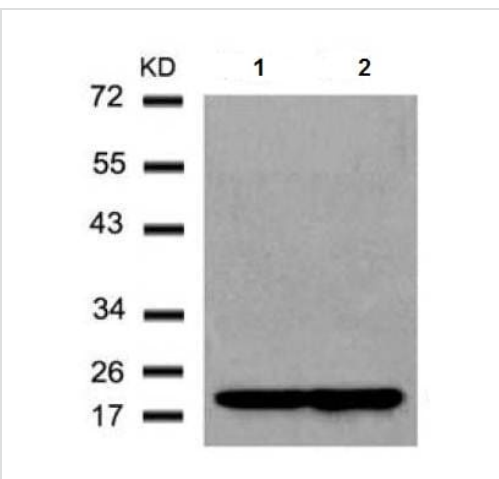
功能	May be involved in the regulation of dopamine release and transport. Induces fibrillization of microtubule-associated protein tau. Reduces neuronal responsiveness to various apoptotic stimuli, leading to a decreased caspase-3 activation.
组织特异性	Expressed principally in brain but is also expressed in low concentrations in all tissues examined except in liver. Concentrated in presynaptic nerve terminals.
疾病相关	Genetic alterations of SNCA resulting in aberrant polymerization into fibrils, are associated with several neurodegenerative diseases (synucleinopathies). SNCA fibrillar aggregates represent the major non A-beta component of Alzheimer disease amyloid plaque, and a major component of Lewy body inclusions. They are also found within Lewy body (LB)-like intraneuronal inclusions, glial inclusions and axonal spheroids in neurodegeneration with brain iron accumulation type 1. Parkinson disease 1 Parkinson disease 4 Dementia Lewy body
序列相似性	Belongs to the synuclein family.
结构域	The 'non A-beta component of Alzheimer disease amyloid plaque' domain (NAC domain) is involved in fibrils formation. The middle hydrophobic region forms the core of the filaments. The C-terminus may regulate aggregation and determine the diameter of the filaments.
翻译后修饰	Phosphorylated, predominantly on serine residues. Phosphorylation by CK1 appears to occur on residues distinct from the residue phosphorylated by other kinases. Phosphorylation of Ser-129 is selective and extensive in synucleinopathy lesions. In vitro, phosphorylation at Ser-129 promoted insoluble fibril formation. Phosphorylated on Tyr-125 by a PTK2B-dependent pathway upon osmotic stress. Hallmark lesions of neurodegenerative synucleinopathies contain alpha-synuclein that is modified by nitration of tyrosine residues and possibly by dityrosine cross-linking to generated stable oligomers. Ubiquitinated. The predominant conjugate is the diubiquitinated form. Acetylation at Met-1 seems to be important for proper folding and native oligomeric structure.
细胞定位	Cytoplasm, cytosol. Membrane. Nucleus. Cell junction, synapse. Secreted. Membrane-bound in dopaminergic neurons.

图片



Immunofluorescence analysis of methanol fixed HeLa cells labelled with ab131508 at 1/100 dilution.

Immunocytochemistry/ Immunofluorescence - Anti-Alpha-synuclein antibody (ab131508)



All lanes : Anti-Alpha-synuclein antibody (ab131508) at 1/500 dilution

Lane 1 : HeLa cell extract

Lane 2 : 3T3 cell extract

Predicted band size: 14 kDa

Western blot - Anti-Alpha-synuclein antibody (ab131508)

Please note: All products are "FOR RESEARCH USE ONLY. NOT FOR USE IN DIAGNOSTIC PROCEDURES"

Our Abpromise to you: Quality guaranteed and expert technical support

- Replacement or refund for products not performing as stated on the datasheet
- Valid for 12 months from date of delivery
- Response to your inquiry within 24 hours
- We provide support in Chinese, English, French, German, Japanese and Spanish
- Extensive multi-media technical resources to help you
- We investigate all quality concerns to ensure our products perform to the highest standards

If the product does not perform as described on this datasheet, we will offer a refund or replacement. For full details of the Abpromise,

please visit <https://www.abcam.cn/abpromise> or contact our technical team.

Terms and conditions

- Guarantee only valid for products bought direct from Abcam or one of our authorized distributors